

# 24" DITA WALL-MOUNT VANITY WITH RECTANGULAR UNDERMOUNT SINK - HONEY OAK

SKU: 953672-24-RUMB

Code: SH483086, SH483087, SH483088, SH483089, SH483090, SH483091, SH483092, SH483093, SH483094, SH483096



## FEATURES

Installation Type: Wall Mount  
Features: Soft-Close Hinges  
Product Finish: Honey Oak  
Material: Wood  
Number of Drawers: 2  
Width: 24"  
Height: 22"  
Depth: 21-1/2"  
Assembly Required: No  
Dovetail Drawers: Yes  
Number of Basins: 1  
Sink Installation: Undermount - Rectangle  
Fits Drain Hole Size: 1-1/2"  
Faucet Included: No  
Sink Material: Porcelain  
Vanity Top Thickness: 3cm  
Size: 24"  
Hardware Finish: Satin Brass  
Sink Included: yes  
Sink Color: White  
Basin Overflow: Yes  
Vanity Top Included: yes  
Vanity Top Depth: 22"  
Vanity Top Width: 25"  
Mirror Included: false

REVISED 4/5/2023

# 24" DITA WALL-MOUNT VANITY WITH RECTANGULAR UNDERMOUNT SINK - HONEY OAK

SKU: 953672-24-RUMB

Code: SH483086, SH483087, SH483088, SH483089, SH483090, SH483091, SH483092, SH483093, SH483094, SH483096



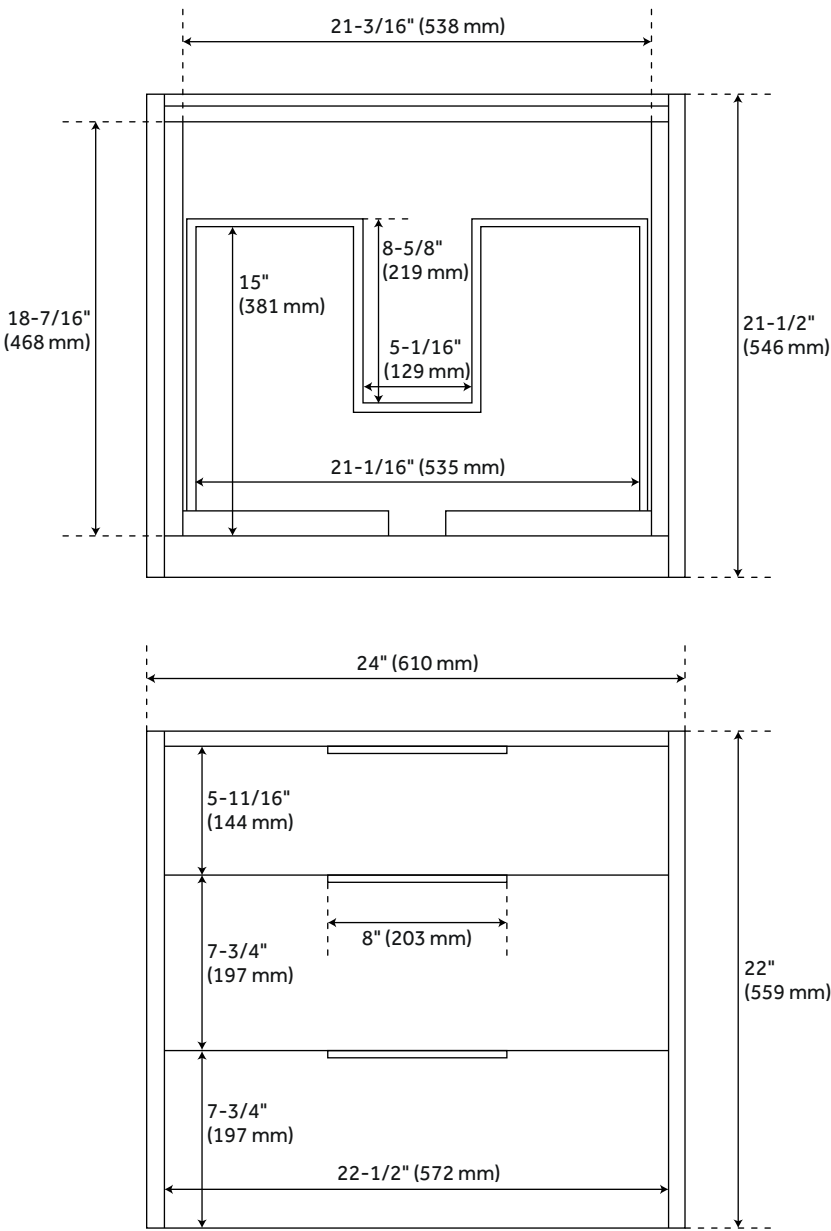
## ADDITIONAL FEATURES

- Teak cabinet with rattan door panels.
- Rattan panels are sealed for added durability and protection.
- For proper maintenance, use only a microfiber cloth and brush to remove dust. Do not use chemicals on rattan.
- Keep the rattan dry. If it is exposed to water, clean and dry immediately using a dry cloth.
- Avoid direct sunlight to uphold the rattan's integrity.
- Includes a matching backsplash and a white porcelain sink.
- Granite is A-grade. Polished Carrara Marble is sourced from Italy.
- Each stone top is carved from a single piece of stone and will feature natural variations.
- See Installation Instructions for directions to attach the vanity top and sink.
- All dimensions are ( $\pm 1/2"$ ).
- [Wood finish samples available.](#)

REVISED 4/5/2023

# 24" DITA WALL-MOUNT VANITY - HONEY OAK

SKU: 482857



All dimensions and specifications are nominal and may vary. Use actual products for accuracy in critical situations.