

# BARLOW WALL MOUNT TUB FAUCET AND HAND SHOWER WITH METAL CROSS HANDLES

SKU: 927726

Code: SH414694, SH405703, SH405704



## FEATURES

Material: Metal construction for strength and durability

Installation Type: Wall Mount

Flow Rate: 4.9 gpm (18.5 L/min) @ 20 psi

Hand Shower Flow Rate: 1.6 gpm (6.1 L/min) @ 80 psi

Spray Type: Full

Cartridge Type: Ceramic Disc

Swivel Spout: No

IAPMO, ASME A112.18.1/CSA B125.1, LISTED ID: 526041, 526042, 526043



## ADDITIONAL FEATURES

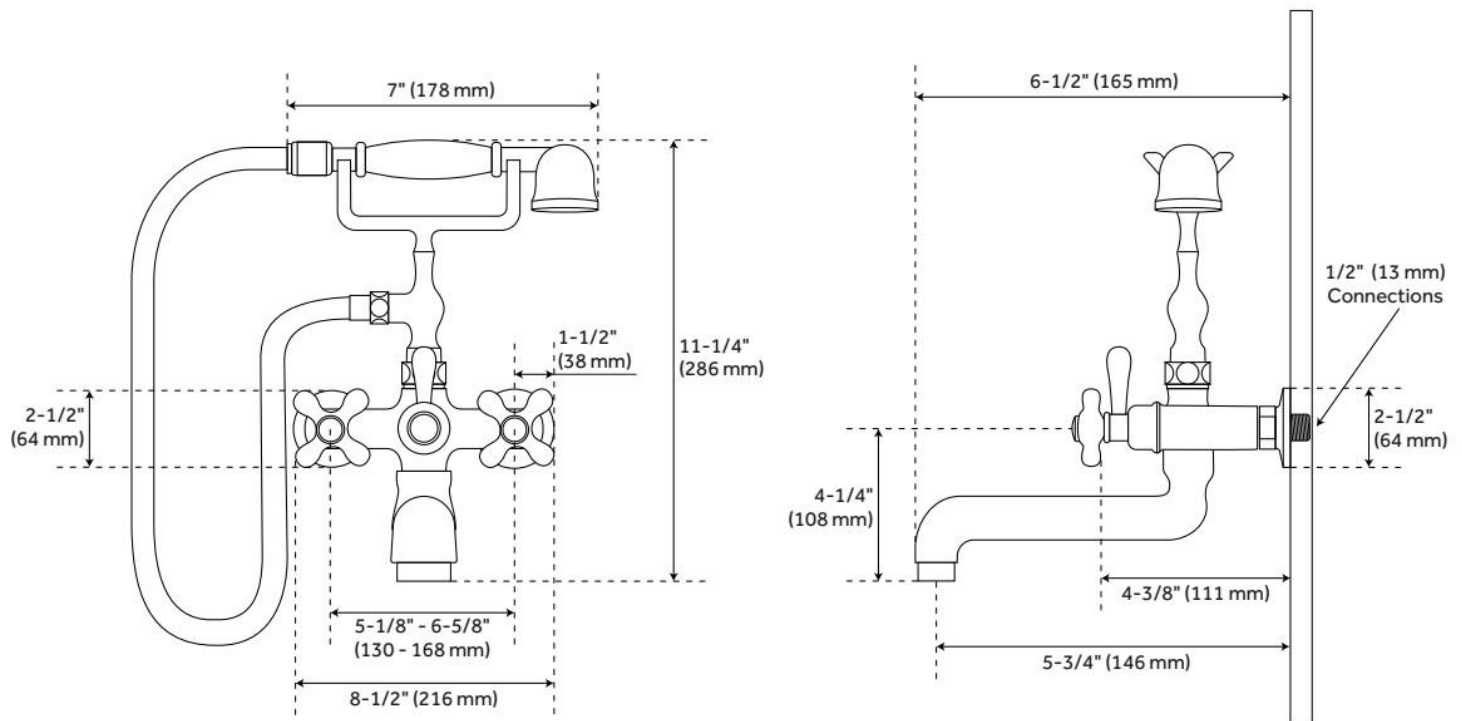
- Handshower has a maximum flow rate of 2.0 gpm (gallons per minute).
- Faucet can be installed with variable centers from 5-1/8" - 6-5/8"

REVISED 5/13/2024

# BARLOW WALL MOUNT TUB FAUCET AND HAND SHOWER WITH METAL CROSS HANDLES

SKU: 927726

Code: SH414694, SH405703, SH405704



REVISED 5/13/2024