

LINDO CENTERSET BATHROOM FAUCET

SKU: 932617

Code: SH418160, SH418157, SH418165



FEATURES

Material: Metal construction for strength and durability

Faucet Centers: 4"

Installation Type: Centerset

Flow Rate: 1.2 gpm (4.5 L/min) @ 60 psi

Cartridge Type: Ceramic Disc

Swivel Spout: No

Drain Type: Metal push-pop with overflow

ASME A112.18.1/CSA B125.1, NSF/ANSI 372, NSF/ANSI 61, NSF/ANSI/CAN 61, NSF/ANSI/CAN 61-9:Q≤1, CEC Listed, Massachusetts Accepted, LISTED ID: SH449727*



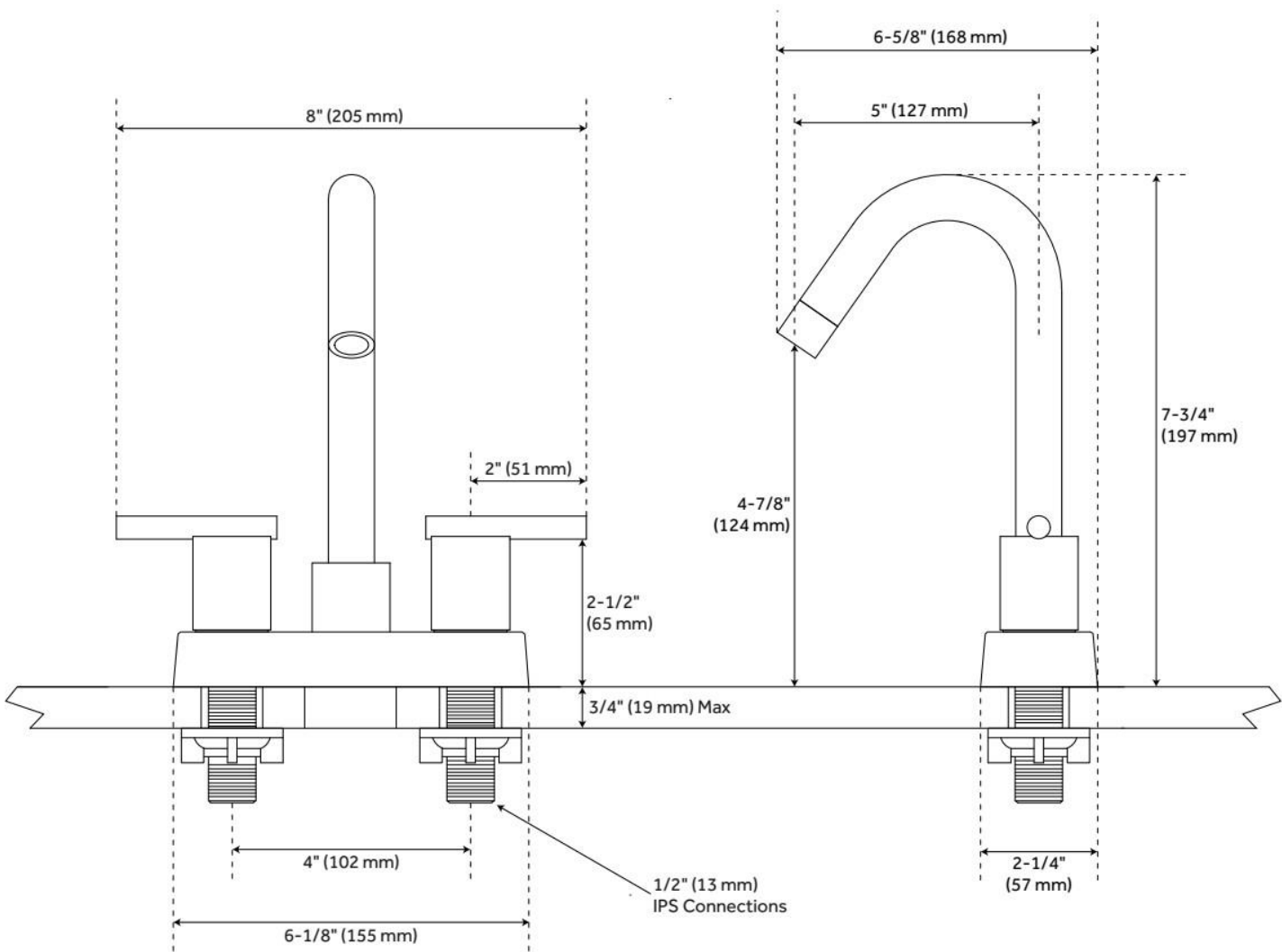
ADDITIONAL FEATURES

- Drain is compatible with sinks that have an overflow hole.

REVISED 6/27/2025

LINDO CENTERSET BATHROOM FAUCET

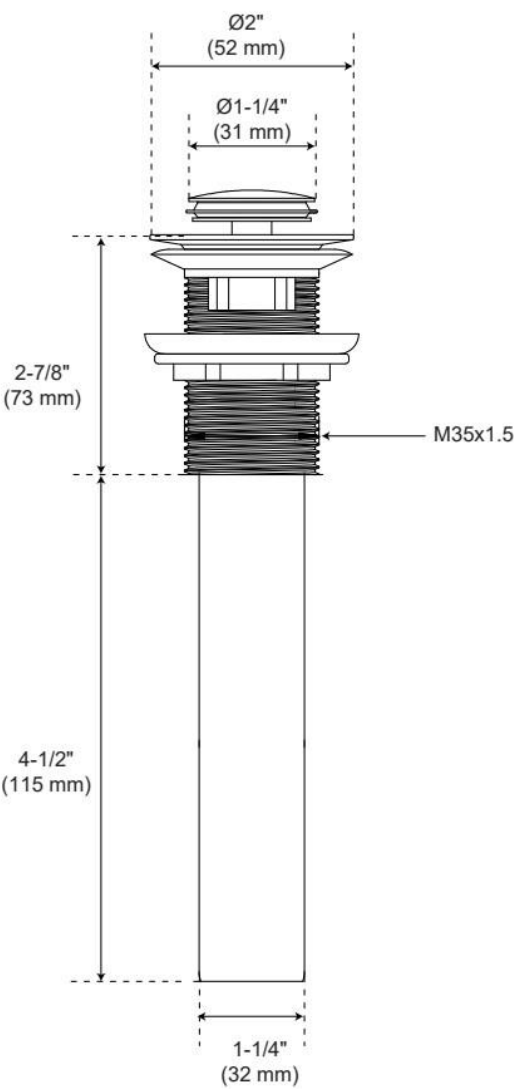
SKU: 932617
Code: SH418160, SH418157, SH418165



REVISED 6/27/2025

LINDO CENTERSET BATHROOM FAUCET

SKU: 932617
Code: SH418160, SH418157, SH418165



REVISED 6/27/2025