

VEYO FREESTANDING TUB FAUCET WITH HAND SHOWER

SKU: 937953

Code: SH425992, SH425993



ASME A112.18.1/CSA B125.1

FEATURES

Installation Type: Freestanding
Features: Hand Shower Included;Rough-In Included
Design: Traditional
Width: 10-1/2"
Height: 40-1/4"
Faucet Centers: 7"
Drain Included: No
Handle Type: Cross
Shut-off Valves Included: No
Hand Shower Hose Length: 59"
Hand Shower Style: Telephone
Hand Shower Material: Porcelain
Water Supplies Included: Yes
Height To Spout: 29-1/2"
Spout Reach: 10"
Ceramic Disc Cartridges: Yes
Hot and Cold Indicators: Yes
Handle Material: Metal
Tub Faucet Material: Metal
Height to Control Valve: 33-1/2"
Spout Width: 2-1/8"

REVISED 3/17/2023

VEYO FREESTANDING TUB FAUCET WITH HAND SHOWER

SKU: 937953

Code: SH425992, SH425993



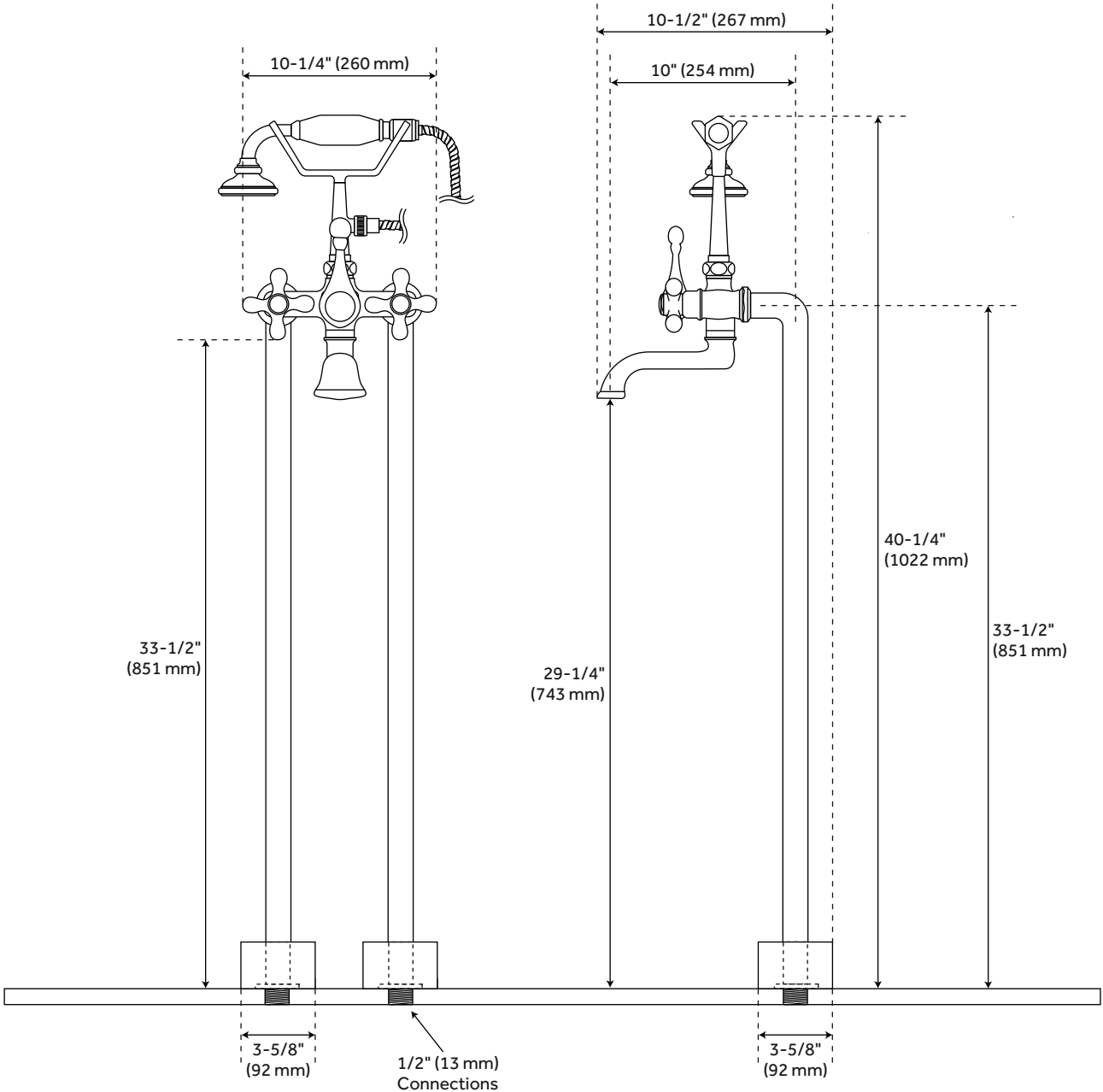
ADDITIONAL FEATURES

- Rough-in included for easier installation on a concrete slab. Rough-in requires setting into concrete, which may involve cutting into existing slab.

REVISED 3/17/2023

VEYO FREESTANDING TUB FAUCET WITH HAND SHOWER

SKU: 937953



All dimensions and specifications are nominal and may vary. Use actual products for accuracy in critical situations.