

# 60" X 32" BRADENTON ACRYLIC ALCOVE WHIRLPOOL TUB - WHITE

SKU: 948255-WP  
Code: SHBDW6032



## FEATURES

Tub Material: Acrylic  
Product Finish: White  
Shape: Rectangle  
Tub Drain Placement: End  
Drain Included: No  
Water Depth to Overflow: 15"  
Water Capacity (Gallons): 53  
Built-In Adjusters: No  
Tub Weight Uncrated (lbs): 107

Massachusetts Accepted, LISTED ID: SHBDS6032



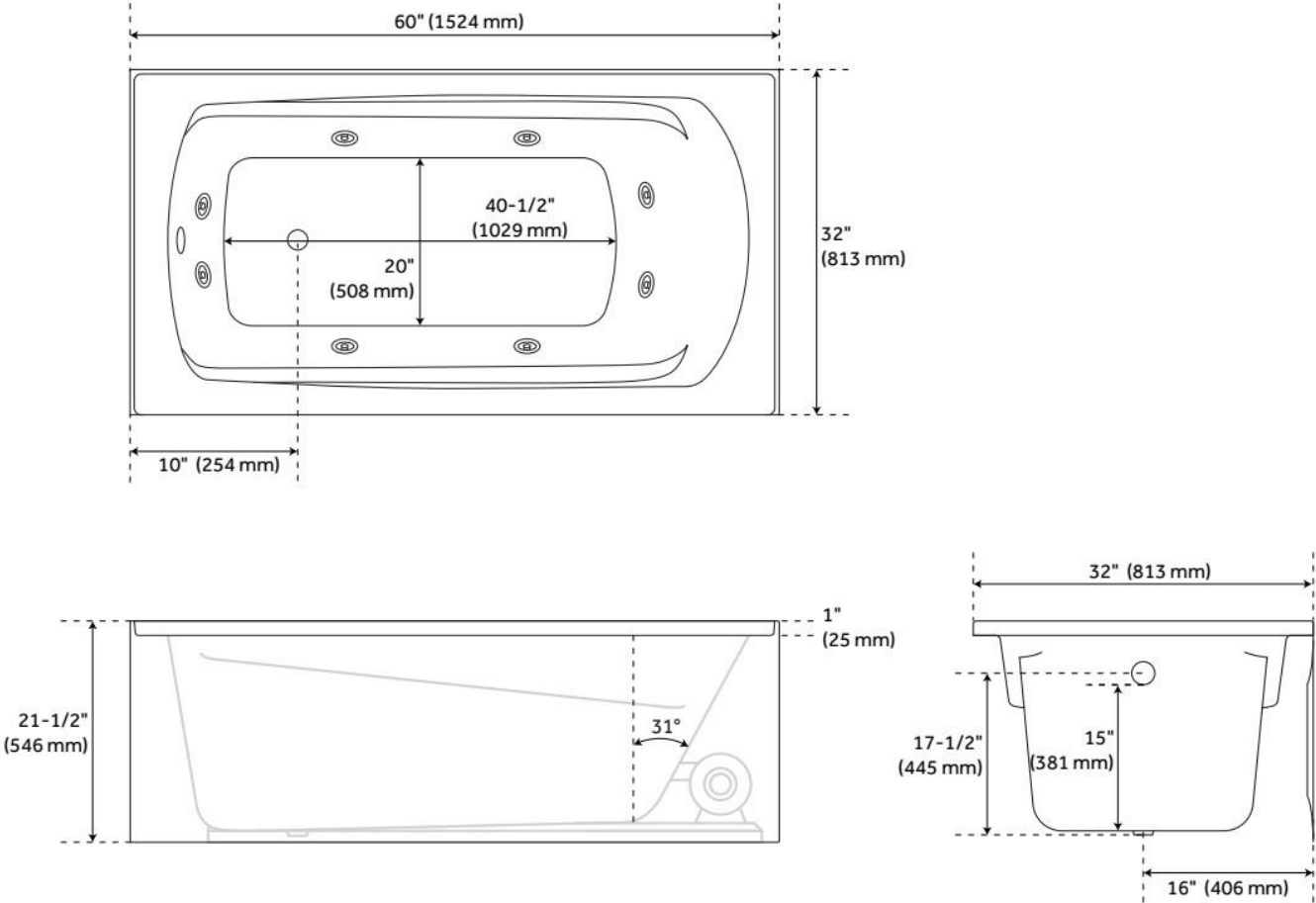
## ADDITIONAL FEATURES

- All dimensions ( $\pm 1/2"$ ).
- Integral arm rests.
- Textured slip-resistant bottom.
- Pre-leveled base.
- 48-gallon capacity
- One single-speed air switch for whirlpool.
- 8 Strategically placed air jets move water with increased pressure for an invigorating bathing experience.
- Whirlpool system uses a powerful 1.60hp, 10.9 amp whirlpool pump.
- Integral tile flange and skirt with removable access panel.
- Safety Suction: Meets all requirements of durability and clog-resistance through standard testing.
- Pre-wired for simple plug-in installation.

REVISED 2/2/2026

# 60" X 32" BRADENTON ACRYLIC ALCOVE WHIRLPOOL TUB - WHITE

SKU: 948255-WP  
Code: SHBDW6032



REVISED 2/2/2026

# 60" X 32" BRADENTON ACRYLIC ALCOVE WHIRLPOOL TUB - WHITE

SKU: 948255-WP

Code: SHBDW6032

## COMPONENTS LIST

- Powerful whirlpool pump with variable flow device

## INSTALLATION

- Whirlpool unit requires dedicated 20 Amp, 120V service
- You must provide a receptacle with a 20 Amp configuration
- Electrical outlet must be mounted 4" (101mm) above the floor line and 12" max (305mm) inside from the edge of the bathtub, or in accordance with local building and electrical codes

## INTEGRATED CONTROL PANEL

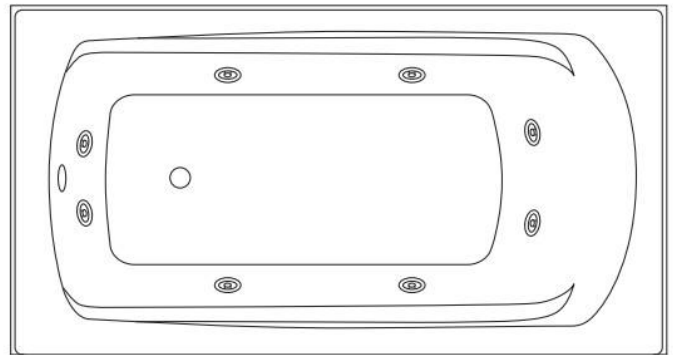
- Whirlpool Baths: Equipped with on/off switch actuator. Each depression of the switch will activate the pump

## INSIDE OF BATH

- (8) HIGH-FLOW DIRECTIONAL AND VOLUME-ADJUSTABLE WHIRLPOOL JETS

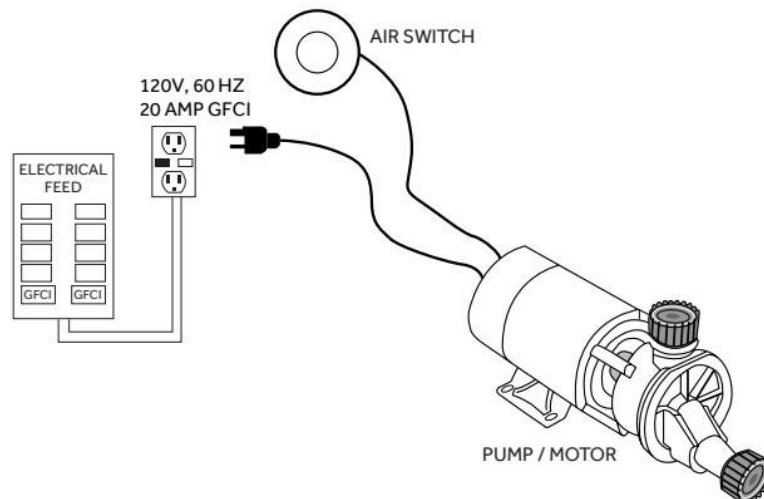


WHIRLPOOL JET



## ELECTRICAL CONFIGURATIONS

### WHIRLPOOL WITH INSTALLED AIR SWITCH



REVISED 2/2/2026