

BEASLEY SINGLE-HOLE BATHROOM FAUCET

SKU: 948570

Code: SHWSCBE100, SHWSCBE107



ASME A112.18.1/CSA B125.1

FEATURES

Installation Type: Single-Hole
Design: Traditional
Length: 2-5/8"
Width: 7-1/8"
Height: 7-1/2"
Base Plate Diameter: 2-5/8"
Faucet Centers: Single-Hole
Overflow Hole: true
Fits Drain Hole Size: 1-1/2"
Drain Included: Yes
Faucet Material: Brass
Handle Type: Lever
Handle Length: 3-1/8"
IPS: 1/2"
Flow Rate: 1.2 gpm (4.5L/min) @ 60 psi
Kitchen Faucet Holes: 1
Max. Countertop Thickness: 2-7/8"
Height To Spout: 3-7/8"
Spout Reach: 5-3/8"
Handle Height: 6-3/4"
Ceramic Disc Cartridges: Yes
Hot and Cold Indicators: No

REVISED 7/17/2023

BEASLEY SINGLE-HOLE BATHROOM FAUCET

SKU: 948570

Code: SHWSCBE100, SHWSCBE107

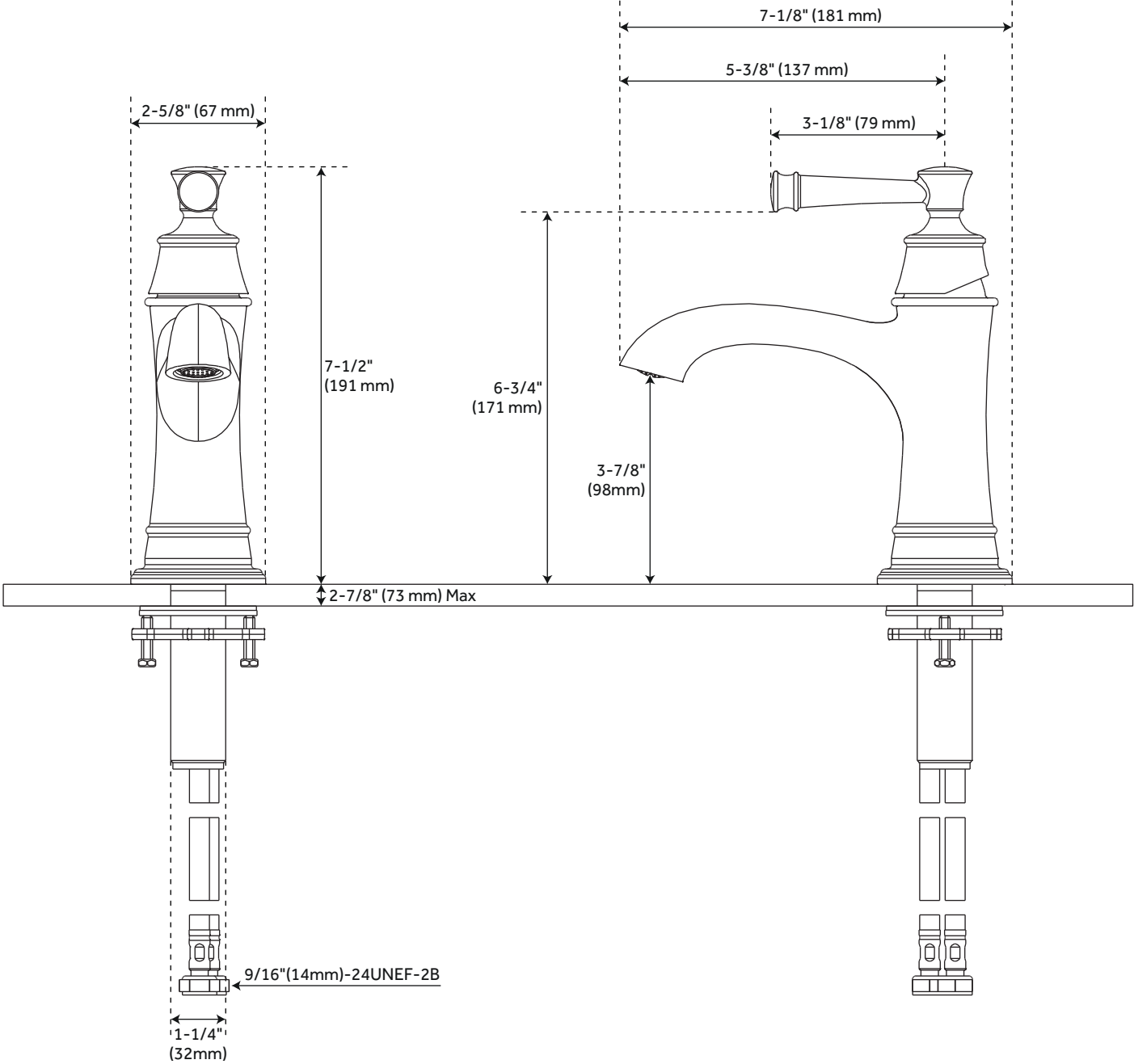


ADDITIONAL FEATURES

- Drain is only compatible with sinks that have an overflow.

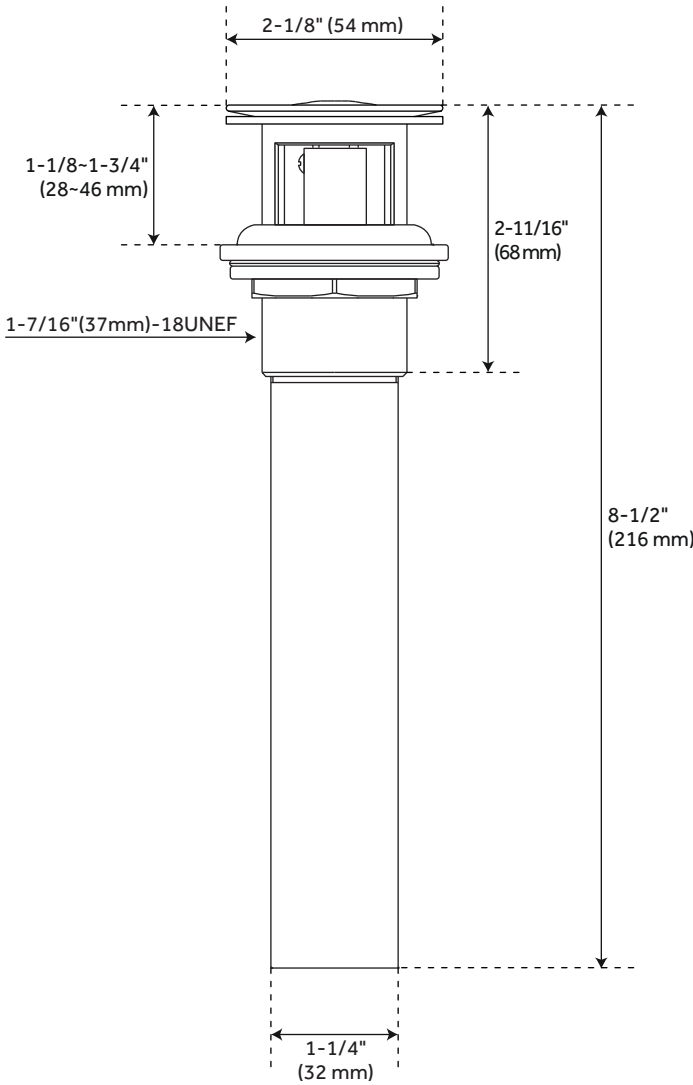
REVISED 7/17/2023

BEASLEY SINGLE-HOLE BATHROOM FAUCET



All dimensions and specifications are nominal and may vary. Use actual products for accuracy in critical situations.

BEASLEY SINGLE-HOLE BATHROOM FAUCET POP-UP DRAIN



All dimensions and specifications are nominal and may vary. Use actual products for accuracy in critical situations.