

EDENTON SINGLE-HOLE BATHROOM FAUCET

SKU: 948573

Code: SHWSCED100P



ASME A112.18.1/CSA B125.1

FEATURES

Installation Type: Single-Hole
Design: Modern
Length: 6-1/4"
Width: 7"
Height: 7-1/4"
Faucet Centers: Single-Hole
Overflow Hole: true
Fits Drain Hole Size: 1-1/2"
Drain Included: Yes
Faucet Material: Brass
Handle Type: Lever
Handle Length: 3-1/2"
Base Plate Width: 2-3/8"
IPS: 1/2"
Flow Rate: 1.2 gpm (gallons per minute)
Kitchen Faucet Holes: 1
Max. Countertop Thickness: 1-7/8"
Height To Spout: 2-3/8"
Spout Reach: 5"
Handle Height: 6-1/2"
Hot and Cold Indicators: Yes

REVISED 3/17/2023

EDENTON SINGLE-HOLE BATHROOM FAUCET

SKU: 948573

Code: SHWSCED100P



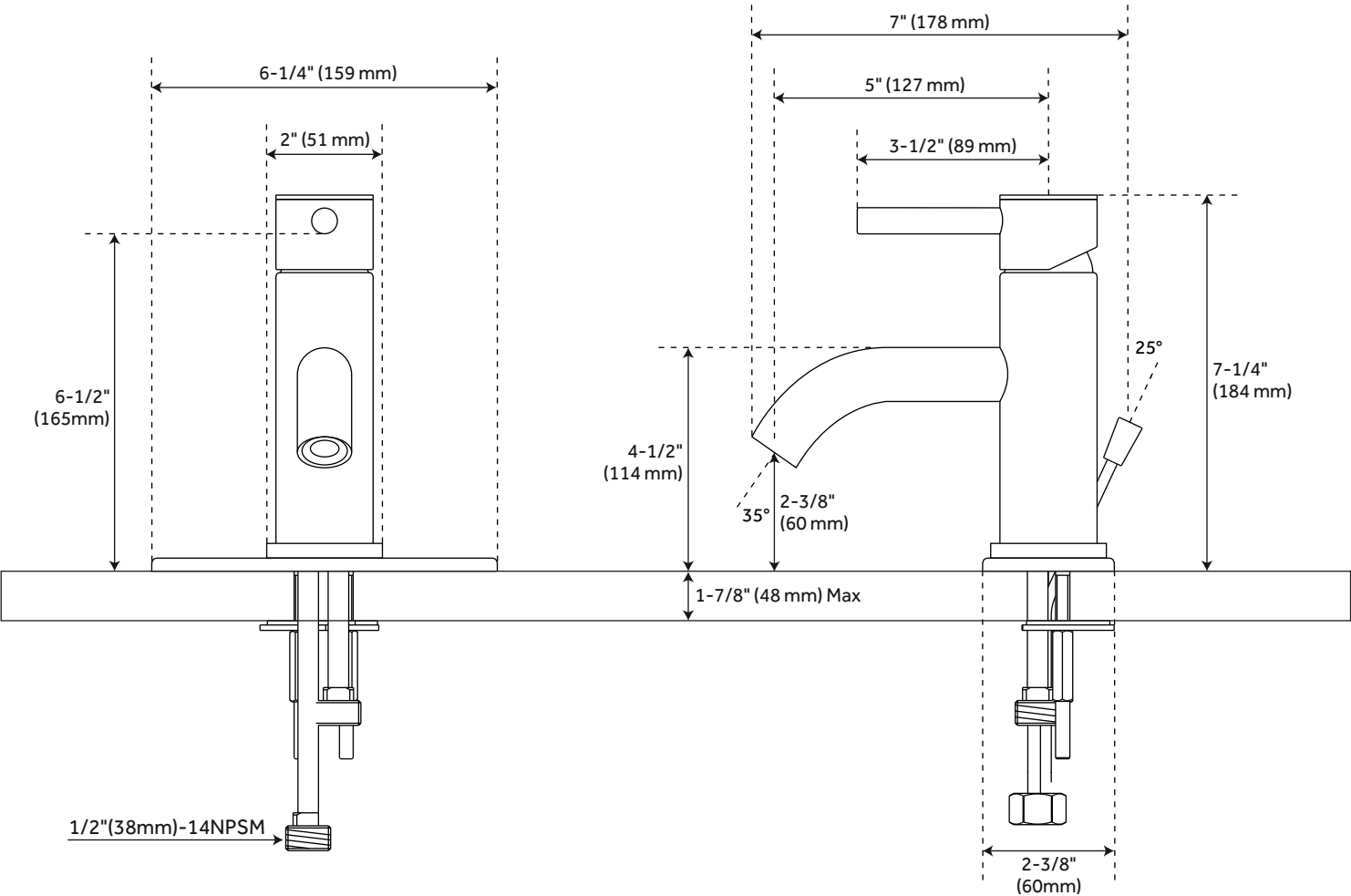
ADDITIONAL FEATURES

- Drain is only compatible with sinks that have an overflow.

REVISED 3/17/2023

EDENTON SINGLE-HOLE BATHROOM FAUCET

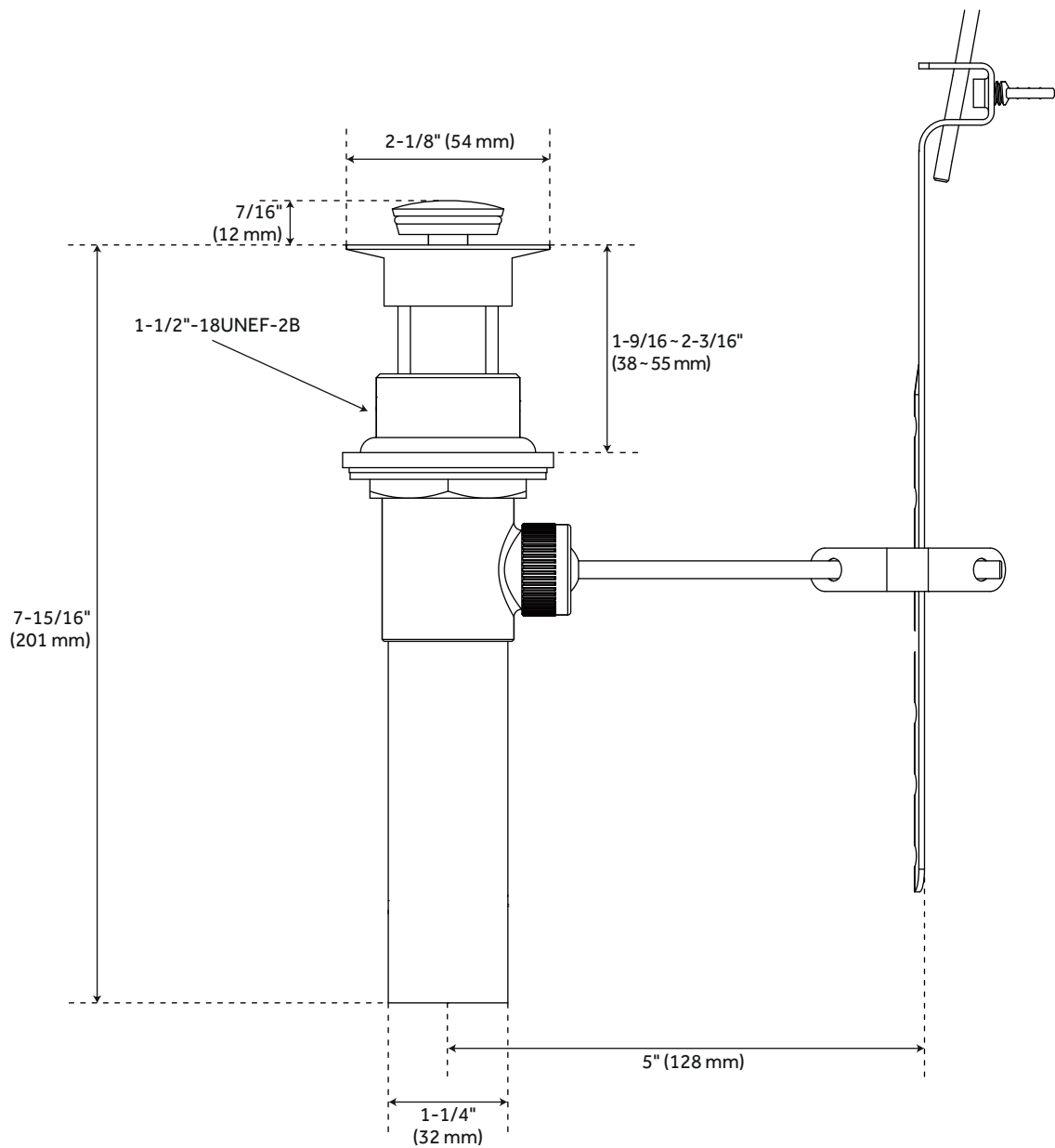
SKU: 948573
SHWSCED100P



All dimensions and specifications are nominal and may vary. Use actual products for accuracy in critical situations.

EDENTON SINGLE-HOLE BATHROOM FAUCET

SKU: 948573
SHWSCED100P



All dimensions and specifications are nominal and may vary. Use actual products for accuracy in critical situations.