

GREYFIELD SINGLE-HOLE BATHROOM FAUCET

SKU: 948574

Code: SHWSCGF107, SH482742, SH482743



ASME A112.18.1/CSA B125.1
ICC/ANSI A117.1
NSF/ANSI 372
NSF/ANSI/CAN 61-9:Q≤1
Massachusetts Accepted
CEC Listed



C



FEATURES

Installation Type: Single-Hole
Design: Modern
Length: 6-3/8"
Width: 6-7/8"
Height: 7-5/8"
Faucet Centers: Single-Hole
Overflow Hole: true
Fits Drain Hole Size: 1-1/2"
Drain Included: Yes
Faucet Material: Brass
Handle Type: Lever
Handle Length: 2-7/8"
Base Plate Width: 2-1/2"
IPS: 1/2"
Flow Rate: 1.2 gpm (4.5 L/min) @ 60 psi
Max. Countertop Thickness: 2-3/8"
Height To Spout: 2-3/4"
Spout Reach: 5-1/8"
Handle Height: 6-7/8"
Hot and Cold Indicators: No

REVISED 7/18/2023

GREYFIELD SINGLE-HOLE BATHROOM FAUCET

SKU: 948574

Code: SHWSCGF107, SH482742, SH482743



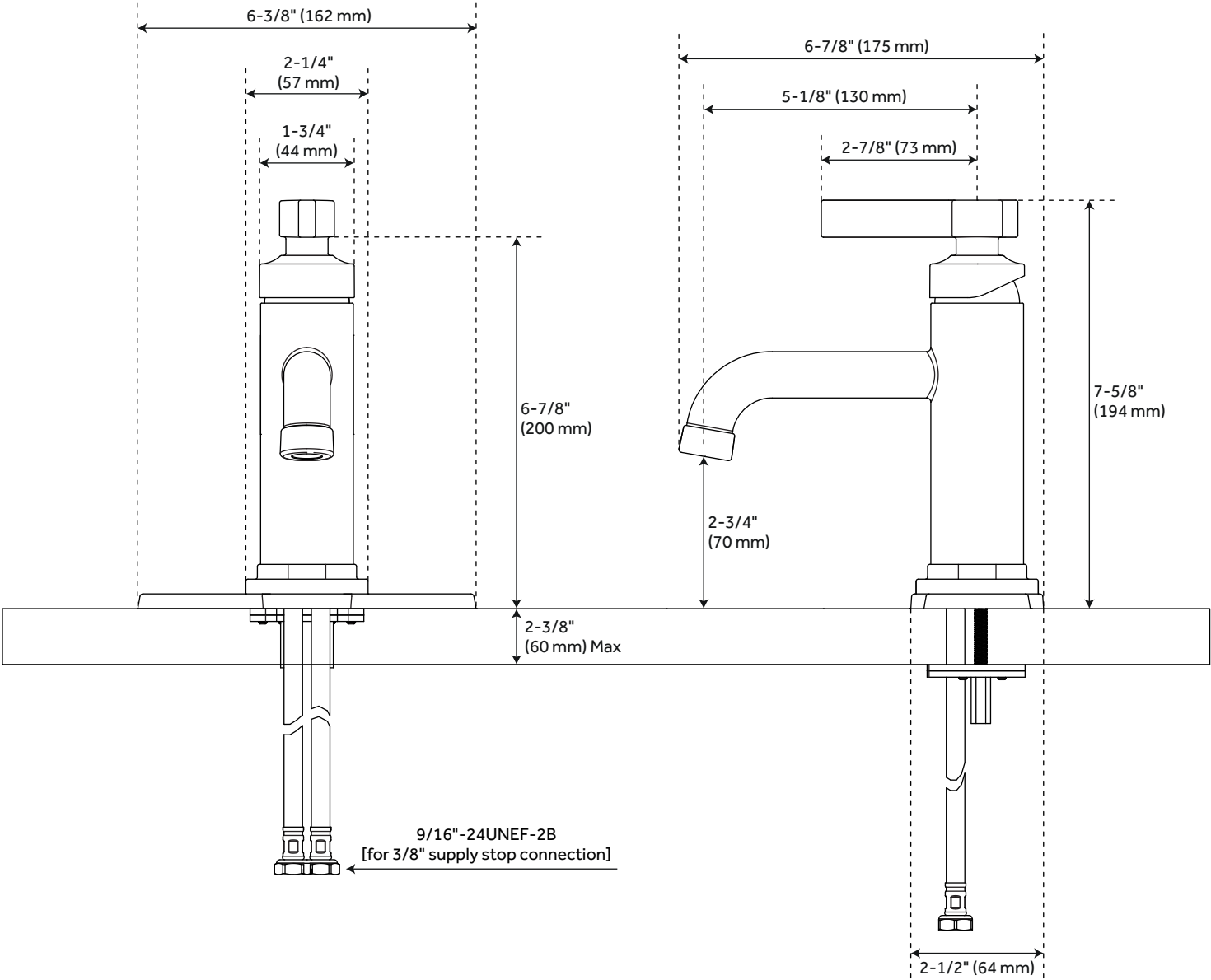
ADDITIONAL FEATURES

- Drain is only compatible with sinks that have an overflow.
- Included deck plate converts faucet from a single-hole installation to a 4" centerset spread.
- Metal handle.

REVISED 7/18/2023

GREYFIELD SINGLE-HOLE BATHROOM FAUCET WITH DECK PLATE

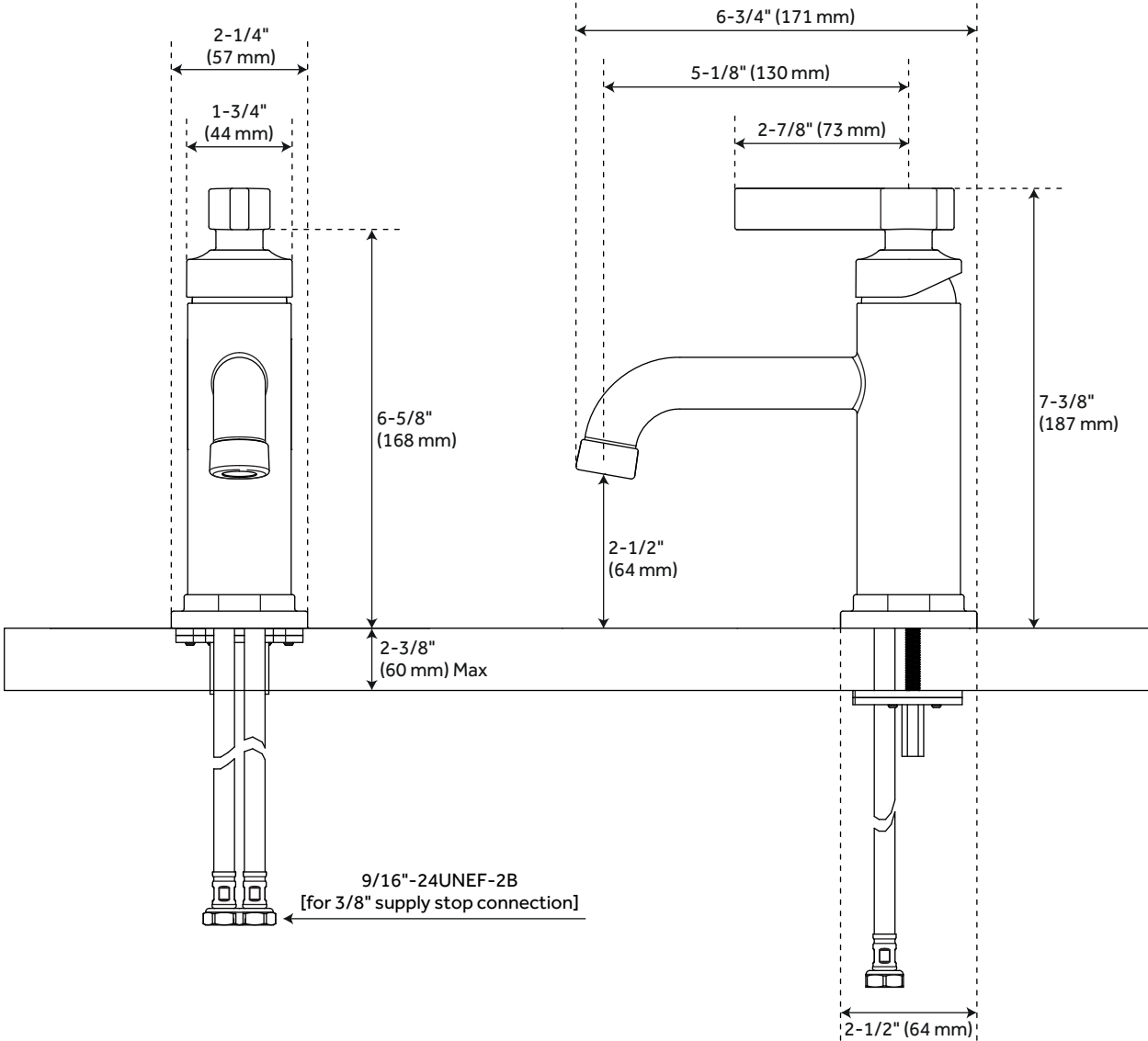
SKU: 948574
SHWSCGF107



All dimensions and specifications are nominal and may vary. Use actual products for accuracy in critical situations.

GREYFIELD SINGLE-HOLE BATHROOM FAUCET WITHOUT DECK PLATE

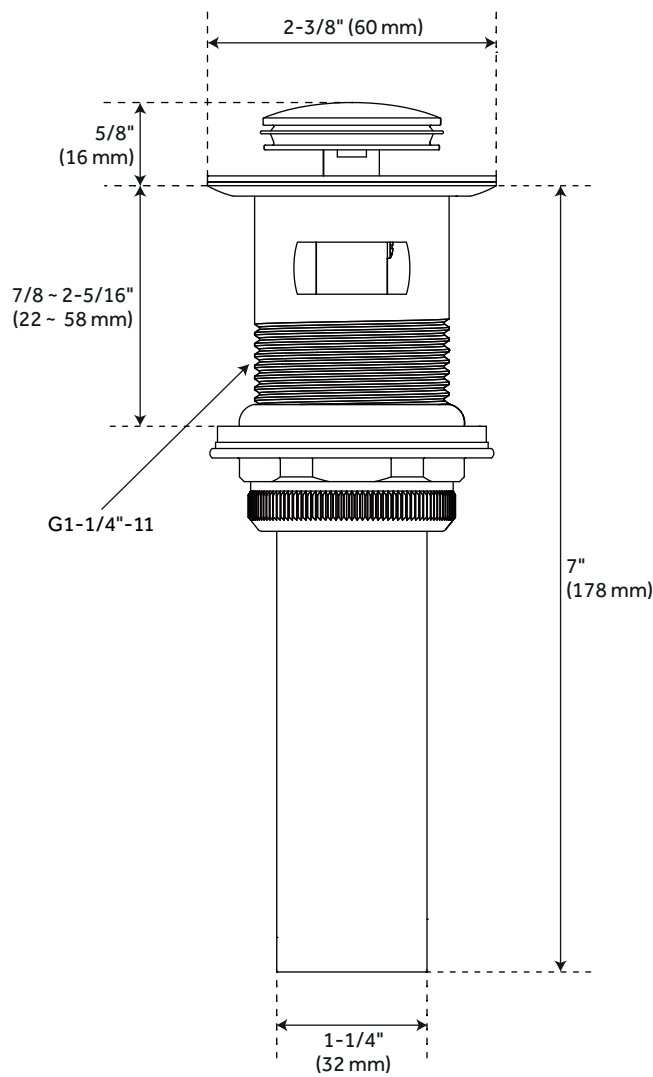
SKU: 948574
SHWSCGF107



All dimensions and specifications are nominal and may vary. Use actual products for accuracy in critical situations.

GREYFIELD SINGLE-HOLE BATHROOM FAUCET POP-UP DRAIN

SKU: 948574
SHWSCGF107



All dimensions and specifications are nominal and may vary. Use actual products for accuracy in critical situations.