

EDENTON SINGLE-HOLE VESSEL FAUCET

SKU: 948601

Code: SHWSCED100L



ASME A112.18.1/CSA B125.1

FEATURES

Installation Type: Single-Hole
Design: Modern
Length: 2-3/8"
Width: 6-7/8"
Height: 13"
Base Plate Diameter: 2-3/8"
Faucet Centers: Single-Hole
Fits Drain Hole Size: 1-1/2"
Drain Included: No
Faucet Material: Brass
Handle Type: Lever
Handle Length: 2-7/8"
IPS: 1/2"
Flow Rate: 1.2 gpm (gallons per minute)
Kitchen Faucet Holes: 1
Max. Countertop Thickness: 2"
Height To Spout: 8-1/4"
Spout Reach: 5-3/16"
Handle Height: 12-1/2"
Hot and Cold Indicators: Yes

REVISED 3/17/2023

EDENTON SINGLE-HOLE VESSEL FAUCET

SKU: 948601

Code: SHWSCED100L

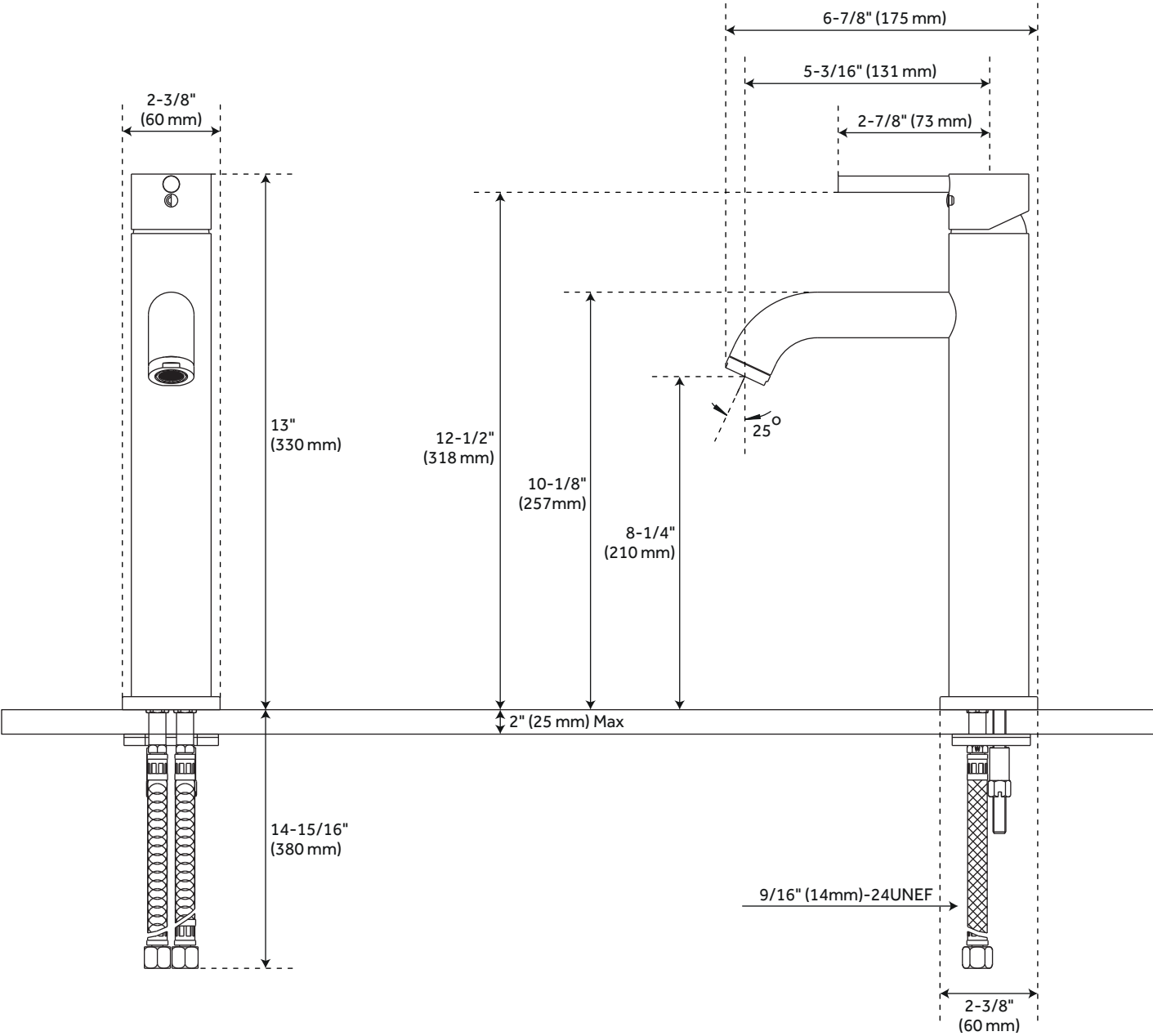


ADDITIONAL FEATURES

REVISED 3/17/2023

EDENTON SINGLE-HOLE VESSEL FAUCET

SKU: 948601
SHWSCED100L



All dimensions and specifications are nominal and may vary. Use actual products for accuracy in critical situations.