

EDENTON WALL-MOUNT BATHROOM FAUCET

SKU: 948608

Code: SHWSCED100



FEATURES

Installation Type: Wall Mount
Design: Modern
Length: 6-3/4"
Width: 10-3/4"
Height: 3-1/4"
Base Plate Length: 2-1/2"
Fits Drain Hole Size: N/A
Drain Included: No
Faucet Material: Brass
Handle Type: Lever
Handle Length: 3-5/8"
Base Plate Width: 2-1/2"
IPS: 1/2"
Flow Rate: 1.2 gpm (4.5L/min) @ 60 psi
Height To Spout: 1-3/4"
Spout Reach: 10-1/16"
Handle Height: 2-3/8"
Hot and Cold Indicators: Yes

ASME A112.18.1/CSA B125.1

REVISED 8/3/2023

EDENTON WALL-MOUNT BATHROOM FAUCET

SKU: 948608

Code: SHWSCED100

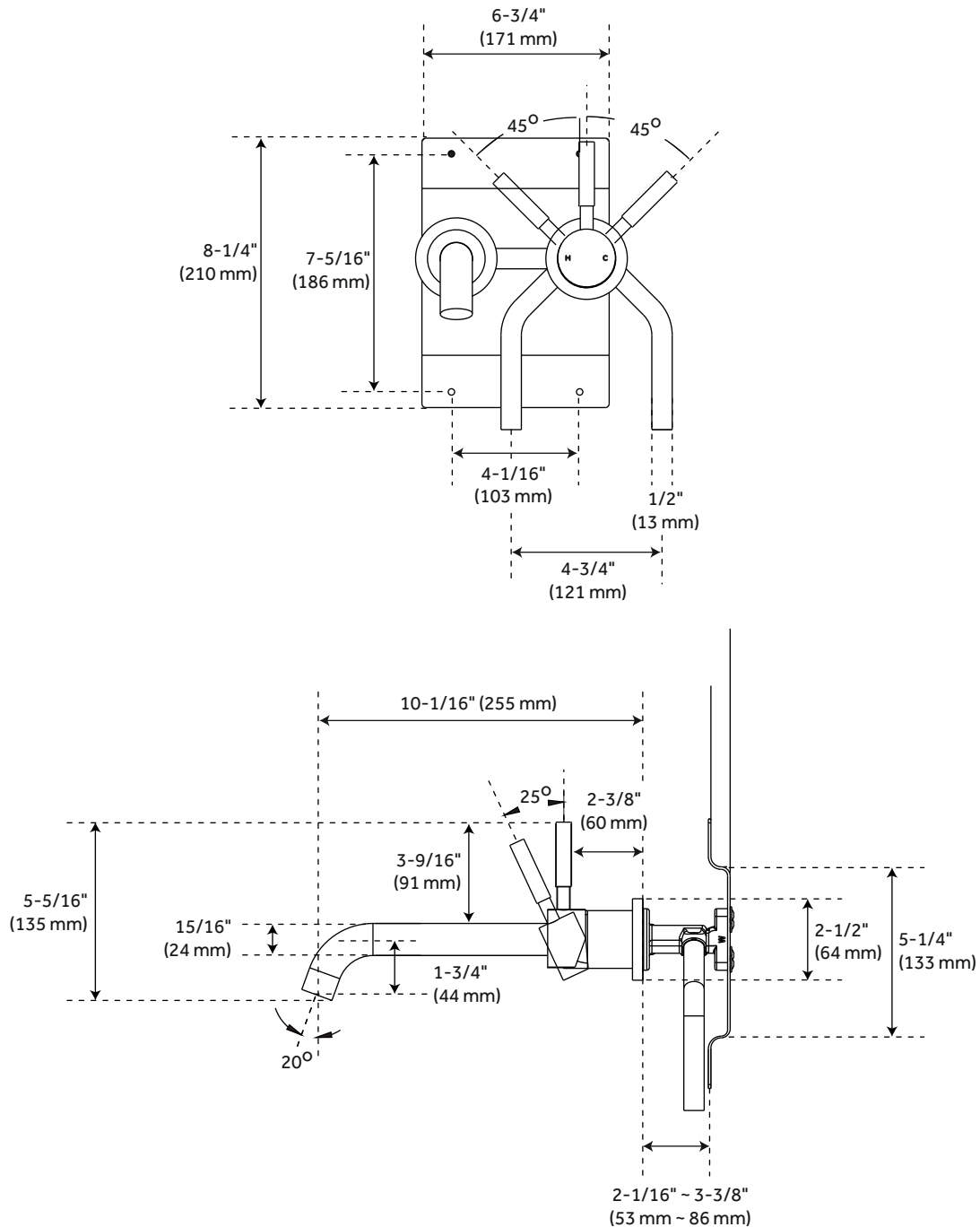


ADDITIONAL FEATURES

- Maximum wall thickness: 2-3/8"

REVISED 8/3/2023

EDENTON WALL-MOUNT BATHROOM FAUCET



All dimensions and specifications are nominal and may vary. Use actual products for accuracy in critical situations.