

# BEASLEY THERMOSTATIC SHOWER VALVE

SKU: 948778

Code: SHBE9009, SHBE9009, SH6004, SHBE9009, SH6006



## FEATURES

Installation Type: Wall Mount  
Features: Thermostatic  
Design: Traditional  
Material: Brass  
Mounting Hardware Included: Yes  
Assembly Required: No  
Handle Type: Lever  
Installation Type: Wall Mount  
Valve Trim Width: 6-3/4"  
Valve Trim Height: 6-3/4"  
Valve Trim Diameter: 6-3/4"

ASME A112.18.1/CSA B125.1

REVISED 3/17/2023

# BEASLEY THERMOSTATIC SHOWER VALVE

SKU: 948778

Code: SHBE9009, SHBE9009, SH6004, SHBE9009, SH6006



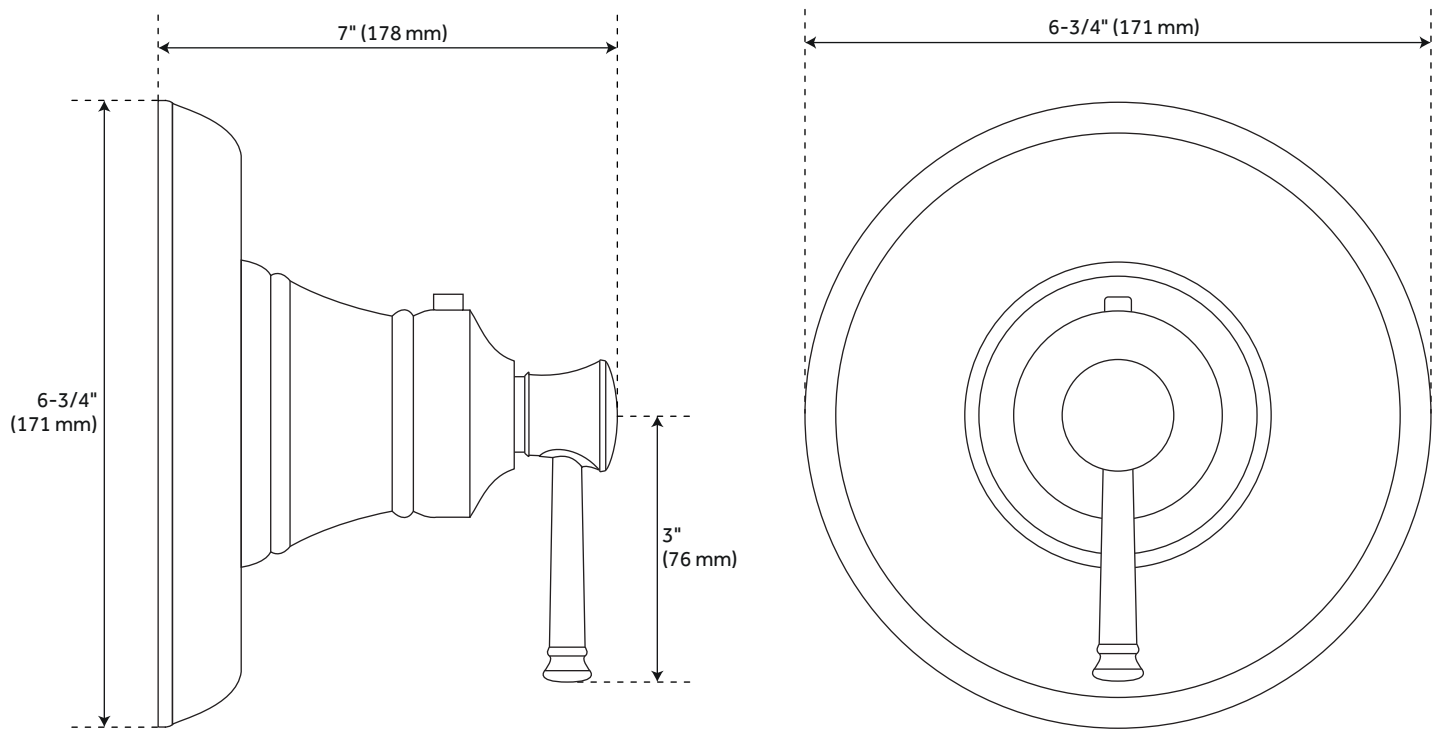
## ADDITIONAL FEATURES

- Overall Projection: 7"
- Temperature outlet factory preset to 104 degrees Fahrenheit.
- Temperature can be easily adjusted up and down to user's comfort level.
- Scald guard protection.
- High temperature limit stop.
- Thermostatic technology keeps shower temperature within 1 degree Celsius.
- For proper installation, requires use of volume control valve and trim.
- Wall thickness range: 1" to 1-3/4"
- Optional Rough-in Valve:
  - Bronze valve body.
  - Ceramic cartridge.
  - Integral water stops and check valve.
  - Recommended valve installation depth 1-5/8" to 2-3/8"
  - Must be installed in accordance with provided installation instructions.

REVISED 3/17/2023

# BEASLEY THERMOSTATIC SHOWER VALVE

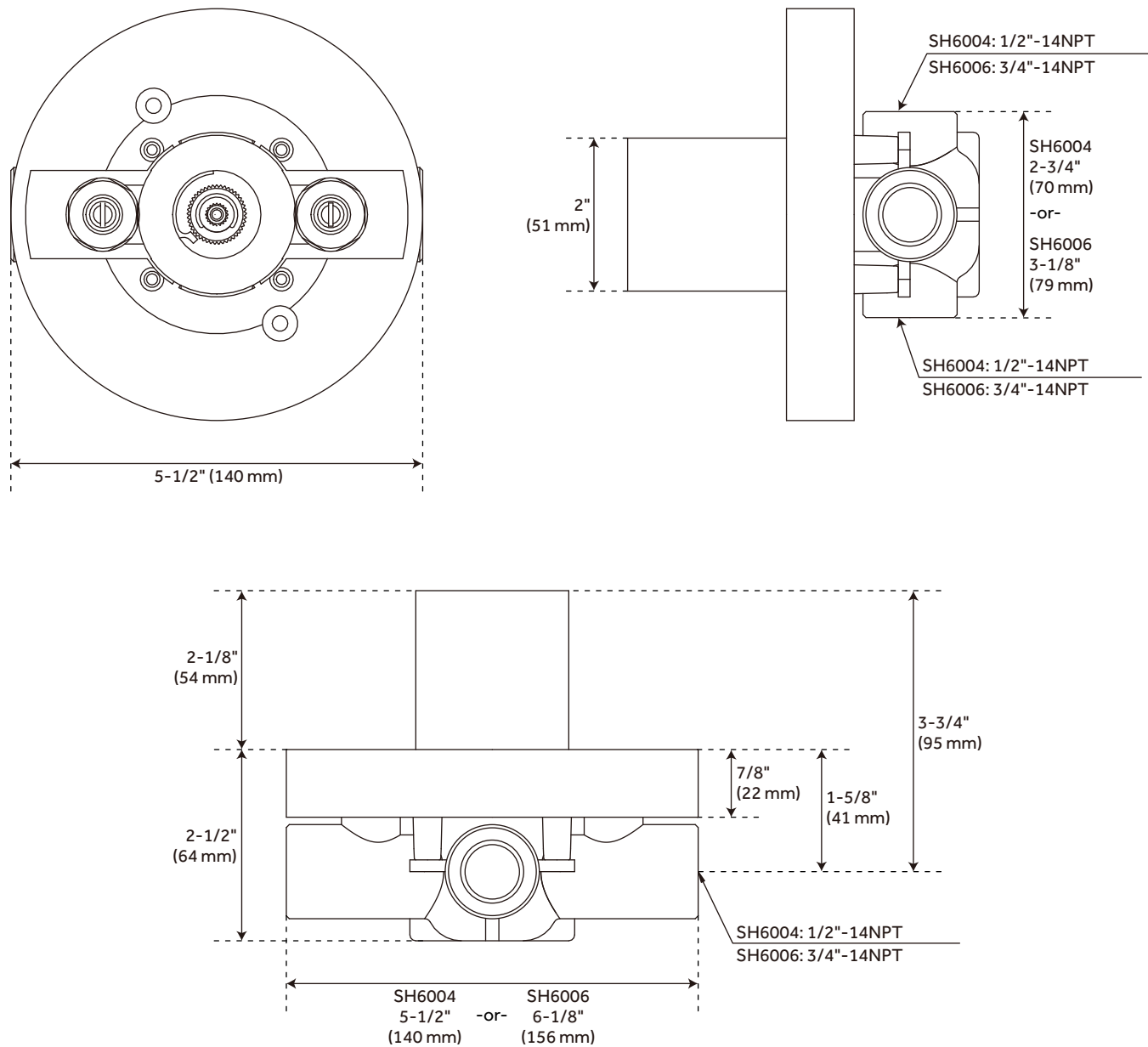
SKU: 948778  
SHBE9009, SHBE9009Z



All dimensions and specifications are nominal and may vary. Use actual products for accuracy in critical situations.

# BEASLEY OPTIONAL THERMOSTATIC ROUGH-IN VALVE WITH 1/2" -OR- 3/4" CONNECTION

SKU: 948778  
SH6004, SH6006



All dimensions and specifications are nominal and may vary. Use actual products for accuracy in critical situations.