

# EDENTON IN-WALL SHOWER DIVERTER

SKU: 948900

Code: SHED9005, SHED9005, SH6103



## FEATURES

Installation Type: Wall Mount

Design: Modern

Material: Brass

Assembly Required: No

Shape: Round

Handle Type: Lever

Installation Type: Wall Mount

NPT Connection: 3/4"

Valve Trim Width: 4-3/8"

Valve Trim Height: 4-3/8"

Diverter Included: Yes

Diverter Outlets: 1

ASME A112.18.1/CSA B125.1



REVISED 3/17/2023

# EDENTON IN-WALL SHOWER DIVERTER

SKU: 948900

Code: SHED9005, SHED9005, SH6103



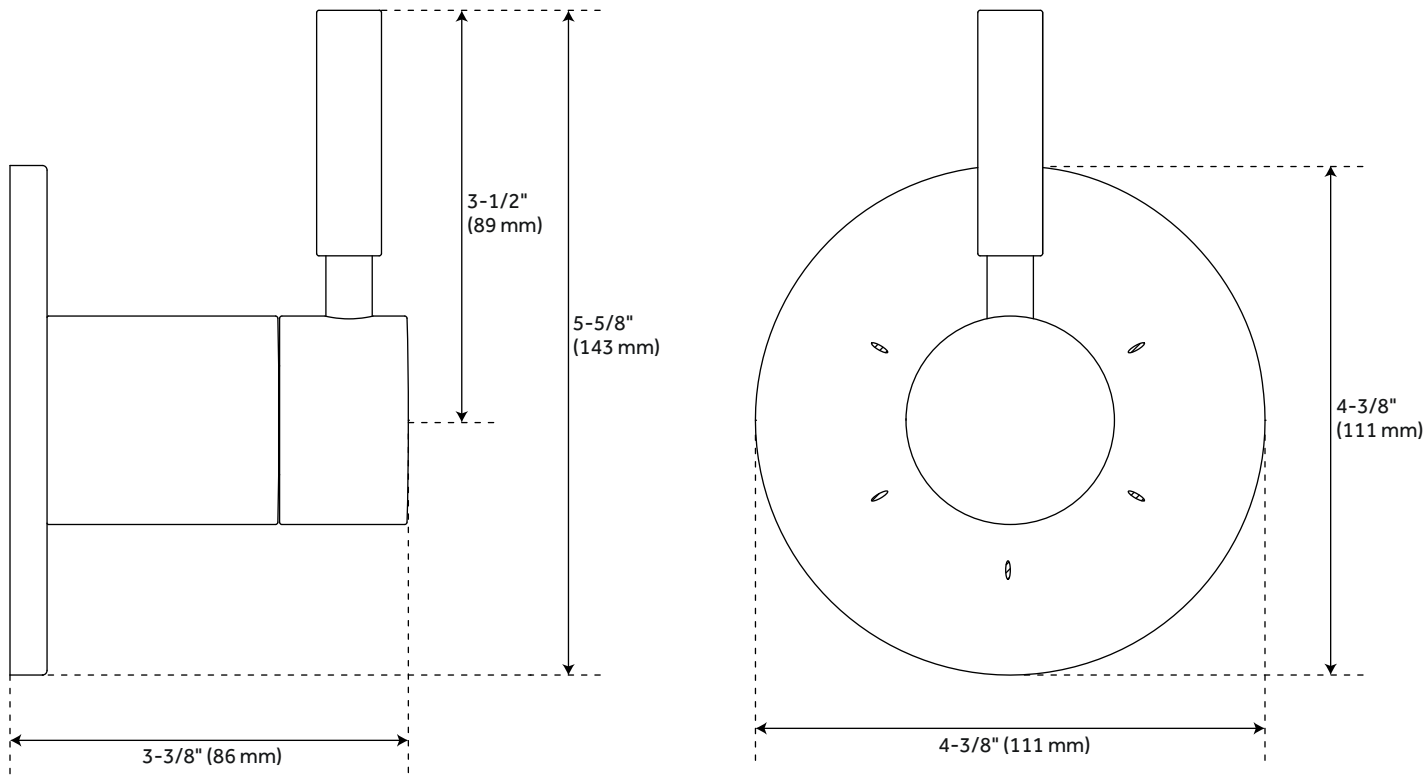
## ADDITIONAL FEATURES

- Metal Lever Handle.
- Not intended as a shut off valve.
- Six total settings allow for shared water flow between outlets, giving you the ability to use two functions at once.
- Optional Rough-in Valve:
  - Available Single-Function Diverter Valve Cartridge restricts water flow to one outlet at a time.
  - Brass valve body.
  - Ceramic cartridge.
  - Must be installed in accordance with provided installation instructions.

REVISED 3/17/2023

# EDENTON IN-WALL SHOWER DIVERTER

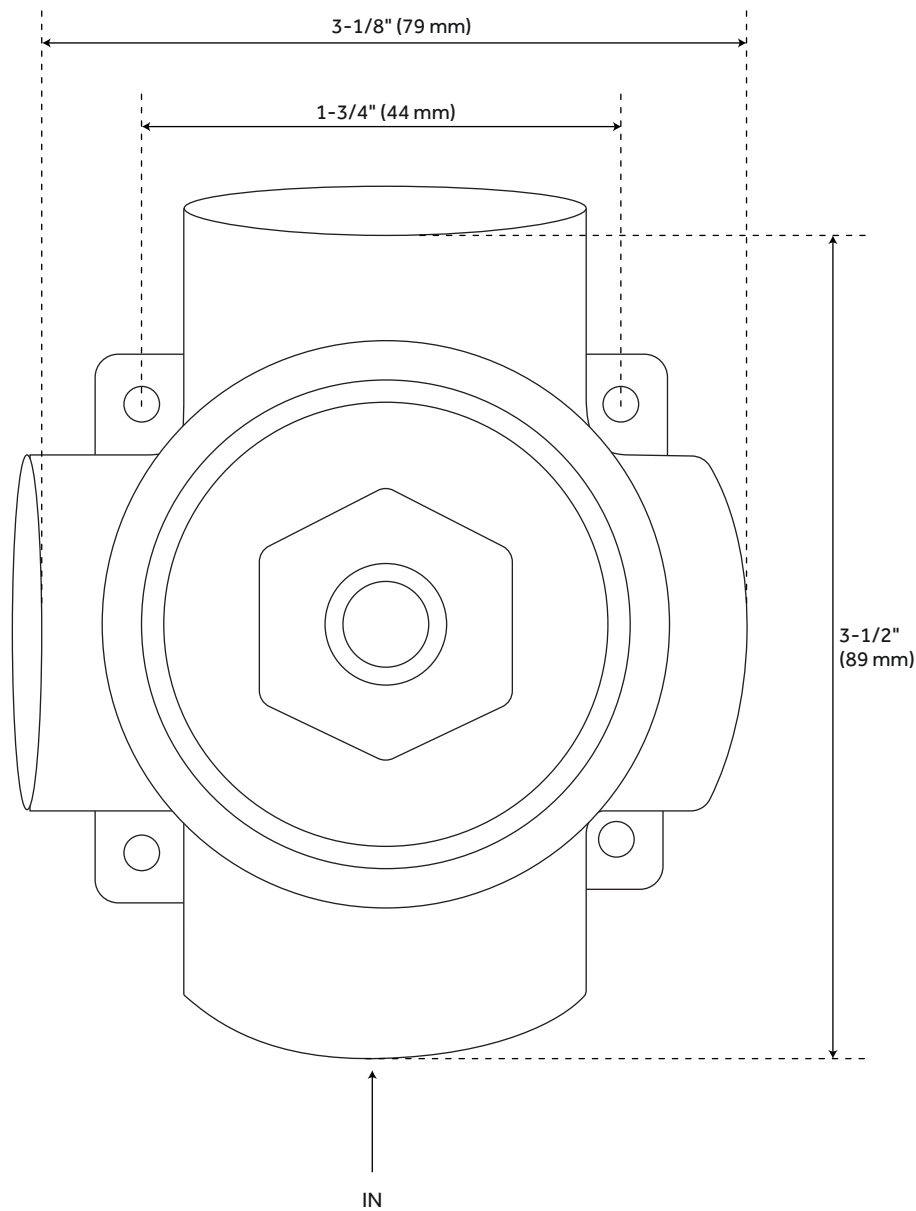
SKU: 948900  
SHED9005



All dimensions and specifications are nominal and may vary. Use actual products for accuracy in critical situations.

# EDENTON OPTIONAL 3-WAY IN-WALL DIVERTER ROUGH-IN VALVE - 3/4"

SKU: 948900  
SH6103



All dimensions and specifications are nominal and may vary. Use actual products for accuracy in critical situations.