

# RIGI THERMOSTATIC SHOWER VALVE

SKU: 948913

Code: SHRI9009, SHRI9009, SH6006, SHRI9009, SH6004, SHRI9009, SH6004



## FEATURES

Installation Type: Wall Mount

Features: Thermostatic

Design: Modern

Material: Brass

Assembly Required: No

Shape: Square

Handle Type: Lever

Installation Type: Wall Mount

Valve Trim Width: 6-1/2"

Valve Trim Height: 6-1/2"

REVISED 3/17/2023

# RIGI THERMOSTATIC SHOWER VALVE

SKU: 948913

Code: SHRI9009, SHRI9009, SH6006, SHRI9009, SH6004, SHRI9009, SH6004



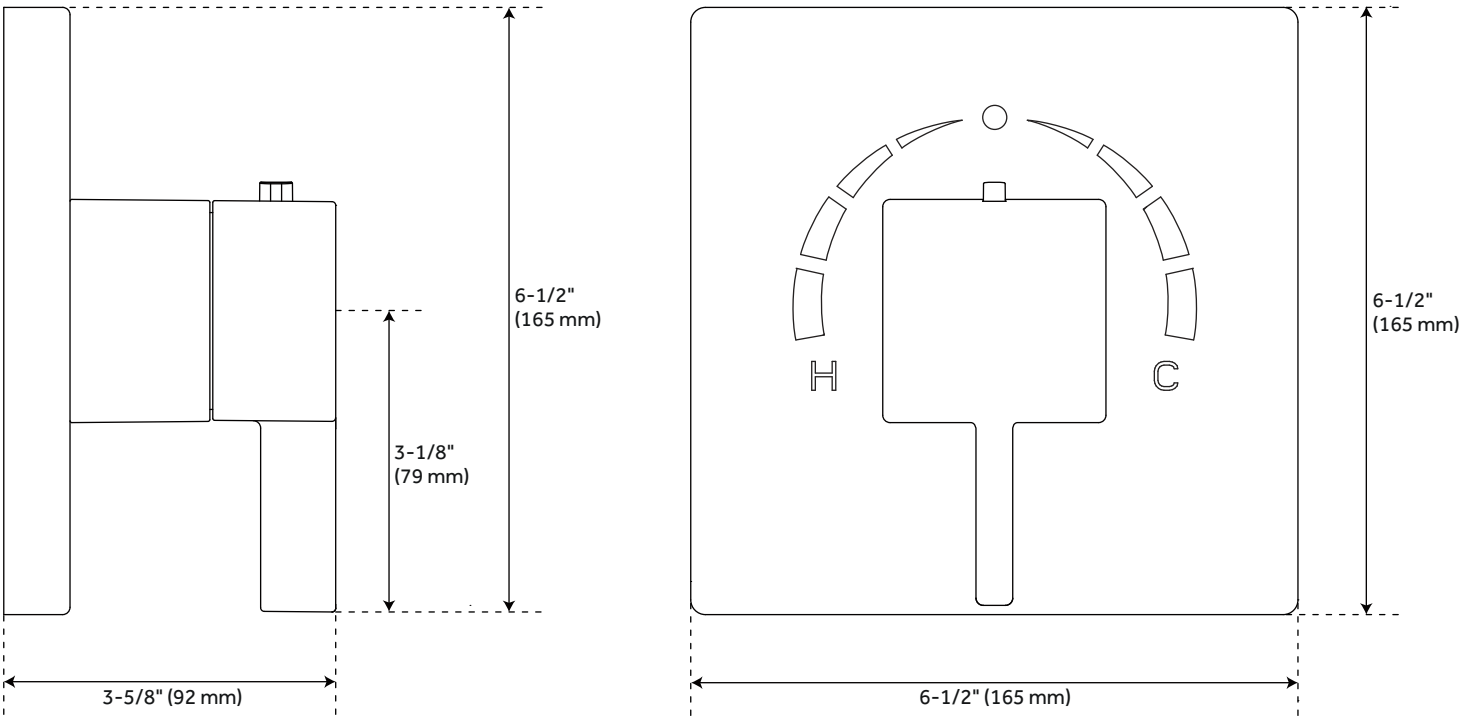
## ADDITIONAL FEATURES

- Metal lever handle.
- Temperature outlet factory preset to 104 degrees Fahrenheit.
- Temperature can be easily adjusted up and down to user's comfort level.
- Scald guard protection.
- High temperature limit stop.
- Thermostatic technology keeps shower temperature within 1 degree Celsius.
- For proper installation, requires use of volume control valve and trim.
- Wall thickness range: 1" to 1-3/4"
- Optional Rough-in Valve:
  - Bronze valve body.
  - Ceramic cartridge.
  - Integral water stops and check valve.
  - Recommended valve installation depth 1-5/8" to 2-3/8"
  - Must be installed in accordance with provided installation instructions.

REVISED 3/17/2023

# RIGI THERMOSTATIC SHOWER VALVE

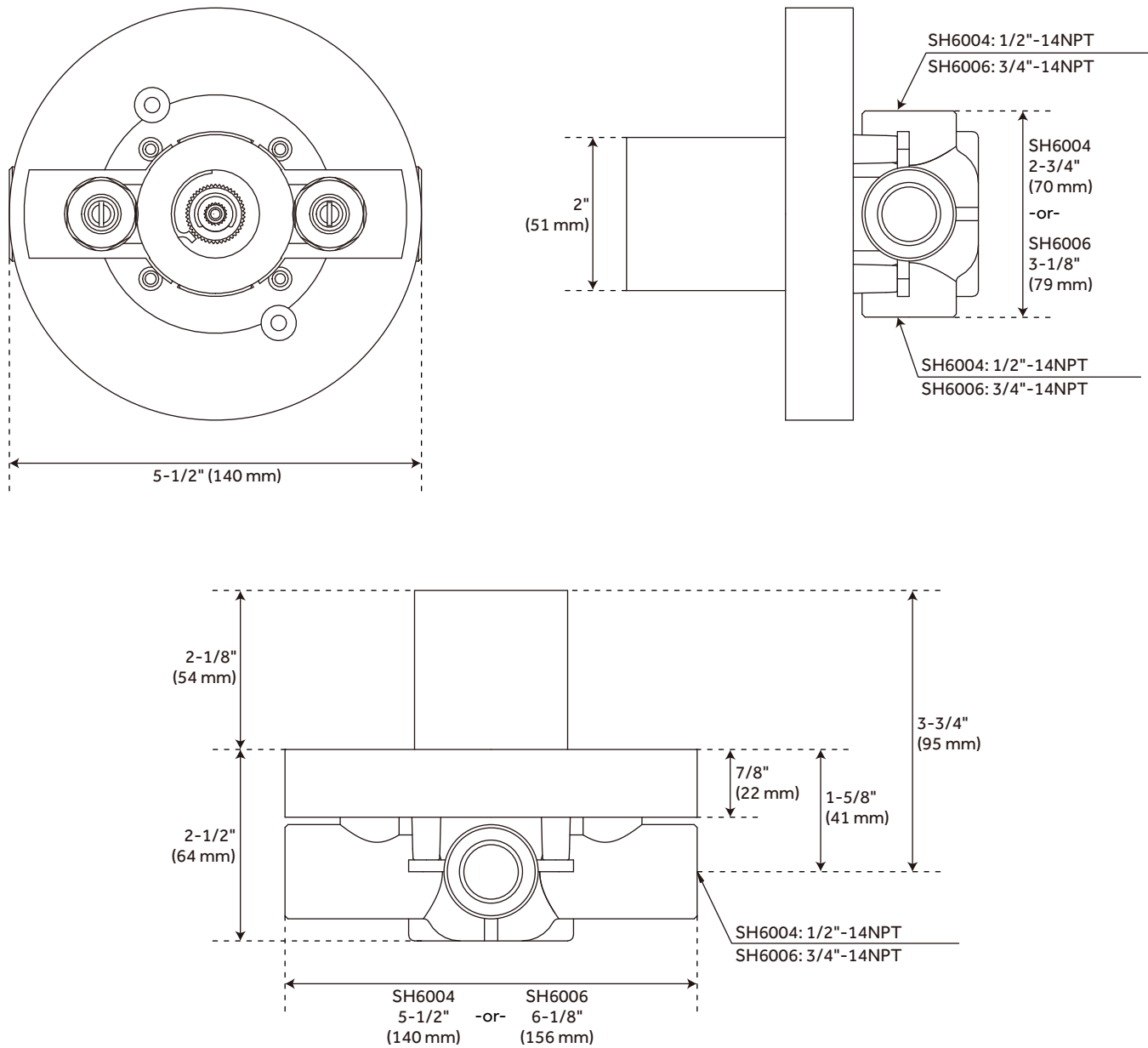
SKU: 948913  
SHRI9009



All dimensions and specifications are nominal and may vary. Use actual products for accuracy in critical situations.

# RIGI OPTIONAL THERMOSTATIC ROUGH-IN VALVE WITH 1/2" -OR- 3/4" CONNECTION

SKU: 948913  
SH6004, SH6006



All dimensions and specifications are nominal and may vary. Use actual products for accuracy in critical situations.