

# FANNING FILTRATION KITCHEN FAUCET

SKU: 949181

Code: SHXCFA101



## FEATURES

Installation Type: Single-Hole

Features: Deck Plate; Pull-Down

Design: Modern

Length: 4-3/4"

Width: 10-1/4"

Height: 20-1/8"

Faucet Centers: Single-Hole

Drain Included: No

Faucet Material: Metal

Handle Type: Lever

Handle Length: 3-1/4"

Base Plate Width: 2-1/2"

IPS: 1/2"

Flow Rate: 1.8 gpm (6.8 L/min) @ 60 psi

Kitchen Faucet Holes: 1

Hand Sprayer Material: ABS

Max. Countertop Thickness: 2-1/2"

Height To Spout: 10-1/8"

Spout Reach: 8-1/4"

Swivel Spout: true

Handle Height: 4-7/8"

Ceramic Disc Cartridges: Yes

Hot and Cold Indicators: No



REVISED 3/17/2023

# FANNING FILTRATION KITCHEN FAUCET

SKU: 949181

Code: SHXCFA101



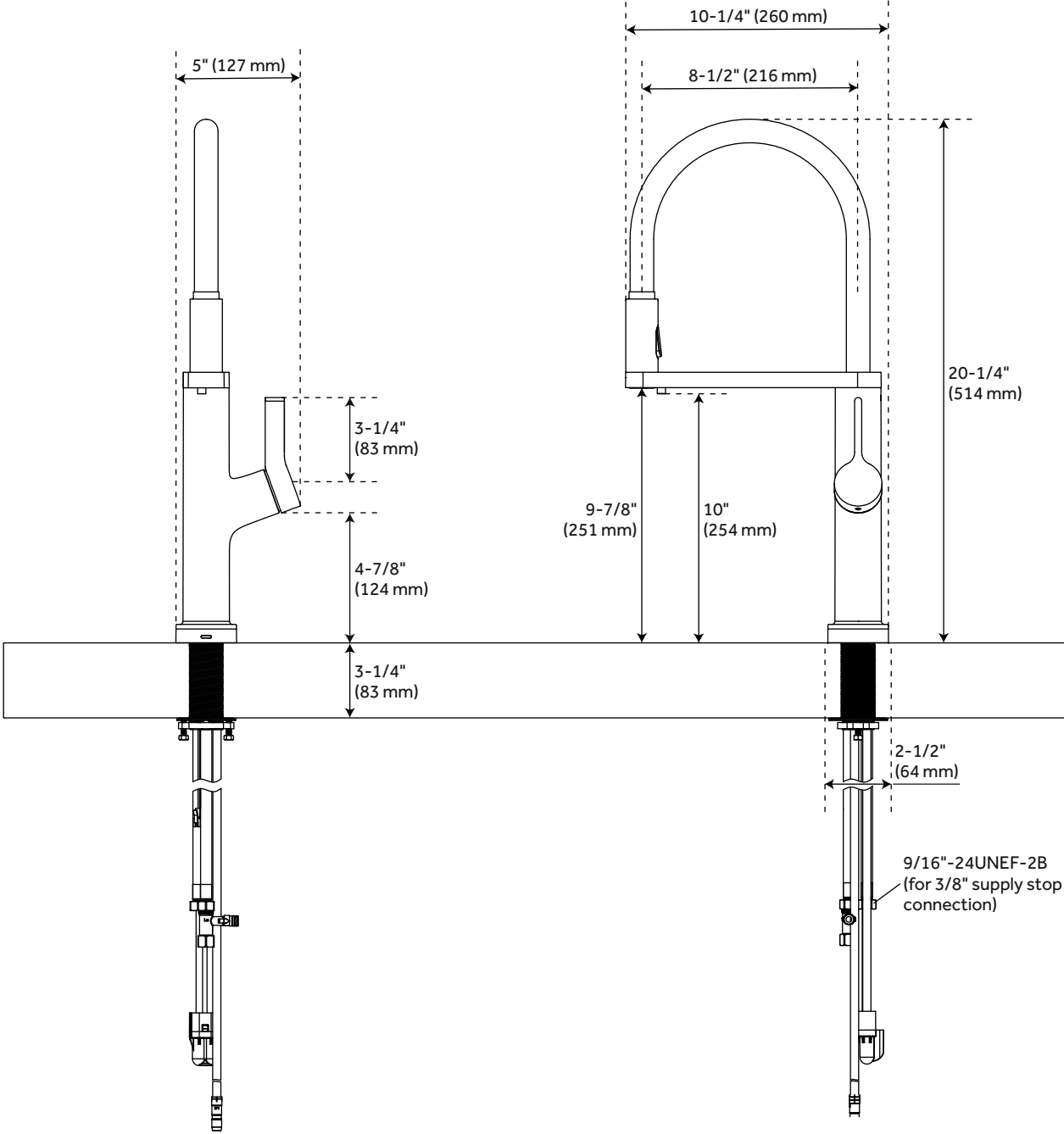
## ADDITIONAL FEATURES

- Included deck plate can be used to hide unused mounting holes.
- Height with deck plate: 20-5/8".
- Length with deck plate: 10-5/8".
- Height to spout with deck plate: 10-1/4".
- Height to bottom of handle with deck plate: 5-1/4".
- Maximum Filtered Flow Rate: 0.8 gpm (3.01 L/min) at 60 psi.
- Filter Warranty: Limited 30-day manufacturer's.
- Filter Life: 6 months or 300 gallons.

REVISED 3/17/2023

# FANNING FILTRATION KITCHEN FAUCET

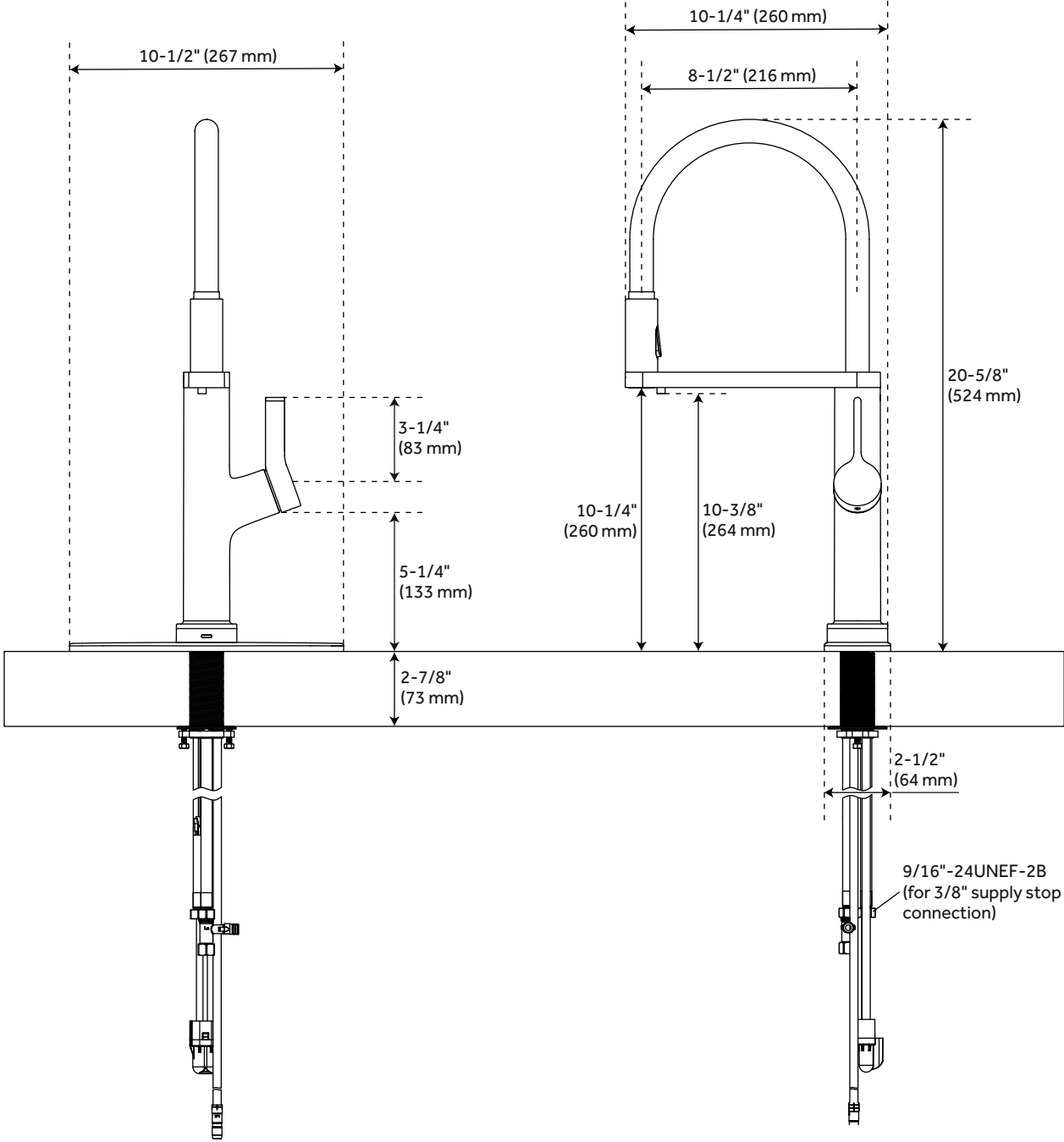
SKU: 949181  
SHXCFA101



All dimensions and specifications are nominal and may vary. Use actual products for accuracy in critical situations.

# FANNING FILTRATION KITCHEN FAUCET WITH DECK PLATE

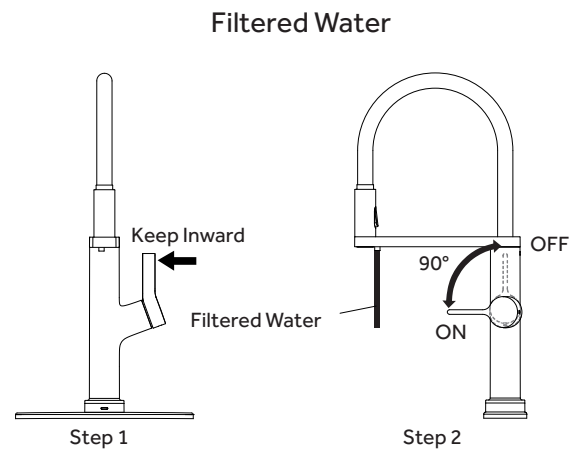
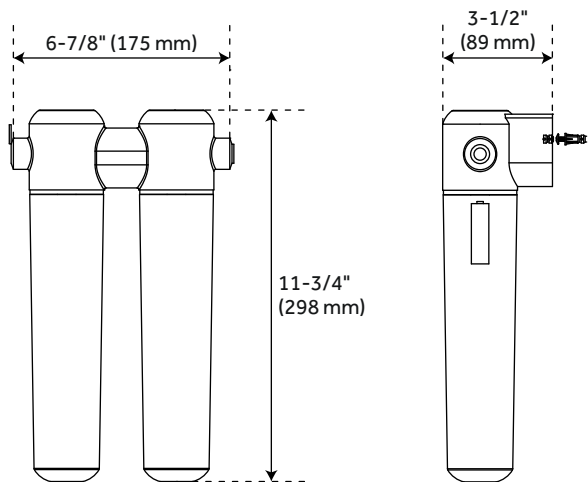
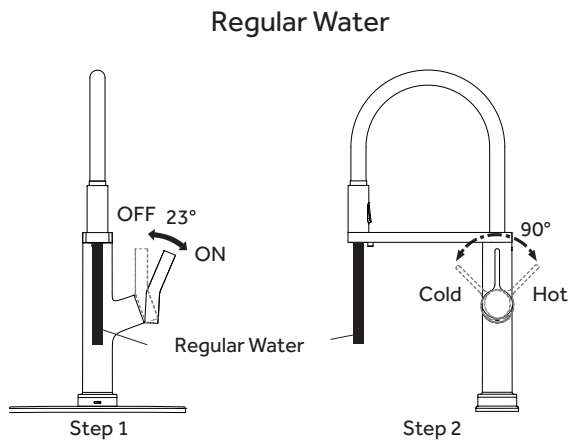
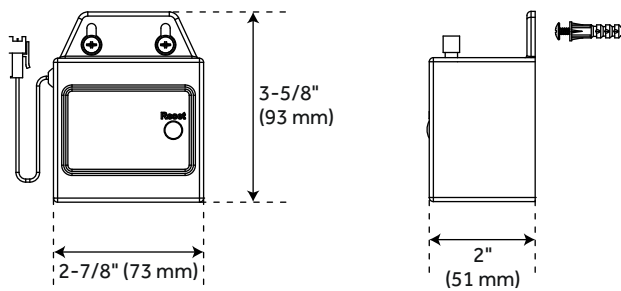
SKU: 949181  
SHXCFA101



All dimensions and specifications are nominal and may vary. Use actual products for accuracy in critical situations.

# FANNING FILTRATION KITCHEN FAUCET DETAILS

SKU: 949181  
SHXCFA101



All dimensions and specifications are nominal and may vary. Use actual products for accuracy in critical situations.