

RAVENEL SINGLE-HOLE PULL-DOWN KITCHEN FAUCET WITH DECK PLATE

SKU: 949686

Code: SHXCRA102, SHDP100



FEATURES

Installation Type: Single-Hole
Features: Deck Plate; Pull-Down
Design: Modern
Length: 10-1/8"
Width: 10-1/4"
Height: 16-1/4"
Faucet Centers: Single-Hole
Drain Included: No
Faucet Material: Metal
Handle Type: Lever
Handle Length: 3-1/2"
Base Plate Width: 2-1/2"
IPS: 3/8"
Flow Rate: 1.75 gpm (6.6 L/min) @ 60 psi
Kitchen Faucet Holes: 1
Max. Countertop Thickness: 2-1/8"
Height To Spout: 9-1/16"
Spout Reach: 8-1/16"
Swivel Spout: true
Handle Height: 2"
Ceramic Disc Cartridges: Yes
Hot and Cold Indicators: No

REVISED 3/17/2023

RAVENEL SINGLE-HOLE PULL-DOWN KITCHEN FAUCET WITH DECK PLATE

SKU: 949686

Code: SHXCRA102, SHDP100



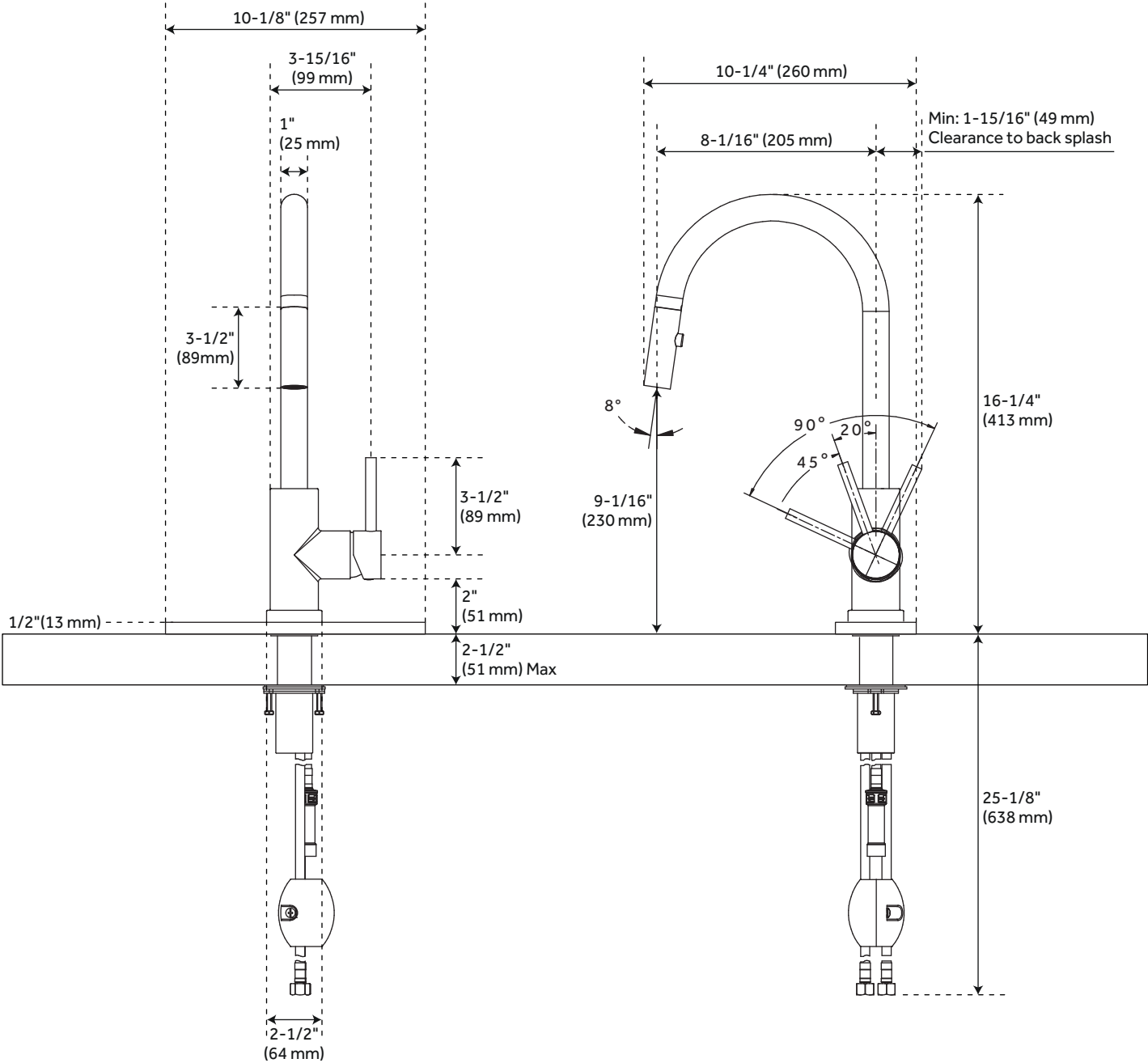
ADDITIONAL FEATURES

- 2-function sprayer: stream and aerated spray.
- Button has to be held down for aerated spray.
- Braided nylon supplies.
- 360 degree swivel spout.

REVISED 3/17/2023

RAVENEL SINGLE-HOLE PULL-DOWN KITCHEN FAUCET WITH DECK PLATE

SKU: 949686
SHXCRA102, SHDP100



All dimensions and specifications are nominal and may vary. Use actual products for accuracy in critical situations.