

RIDGEWAY PULL-DOWN TOUCHLESS KITCHEN FAUCET

SKU: 951732-S

Code: SHXCRD107E, SH482399, SH482398, SH482397



FEATURES

Material: Metal construction for strength and durability

Faucet Centers: Single-Hole

Installation Type: Single-Hole

Flow Rate: 1.75 gpm (6.7 L/min) @ 60 psi

Spray Type: Stream, Full

Cartridge Type: Ceramic Disc

Swivel Spout: Yes

Optional Accessory: Deck plate: OBPF1F80037*

ASME A112.18.1/CSA B125.1, NSF/ANSI 372, NSF/ANSI 61, NSF/ANSI/CAN 61, NSF/ANSI/CAN 61-9:Q≤1, ICC/ANSI A117.1, CEC Listed, CALGreen, Massachusetts Accepted, LISTED ID: SHXCRD107E*



ADDITIONAL FEATURES

- The sensor is activated when motion is detected 2-3/8" in front of the spout.
- A manual override option exists for those who wish to turn off sensor technologies.
- Four AA batteries are included for your convenience.
- Sprayer Button Functions: Stream and spray.
- Spray activation type: Button

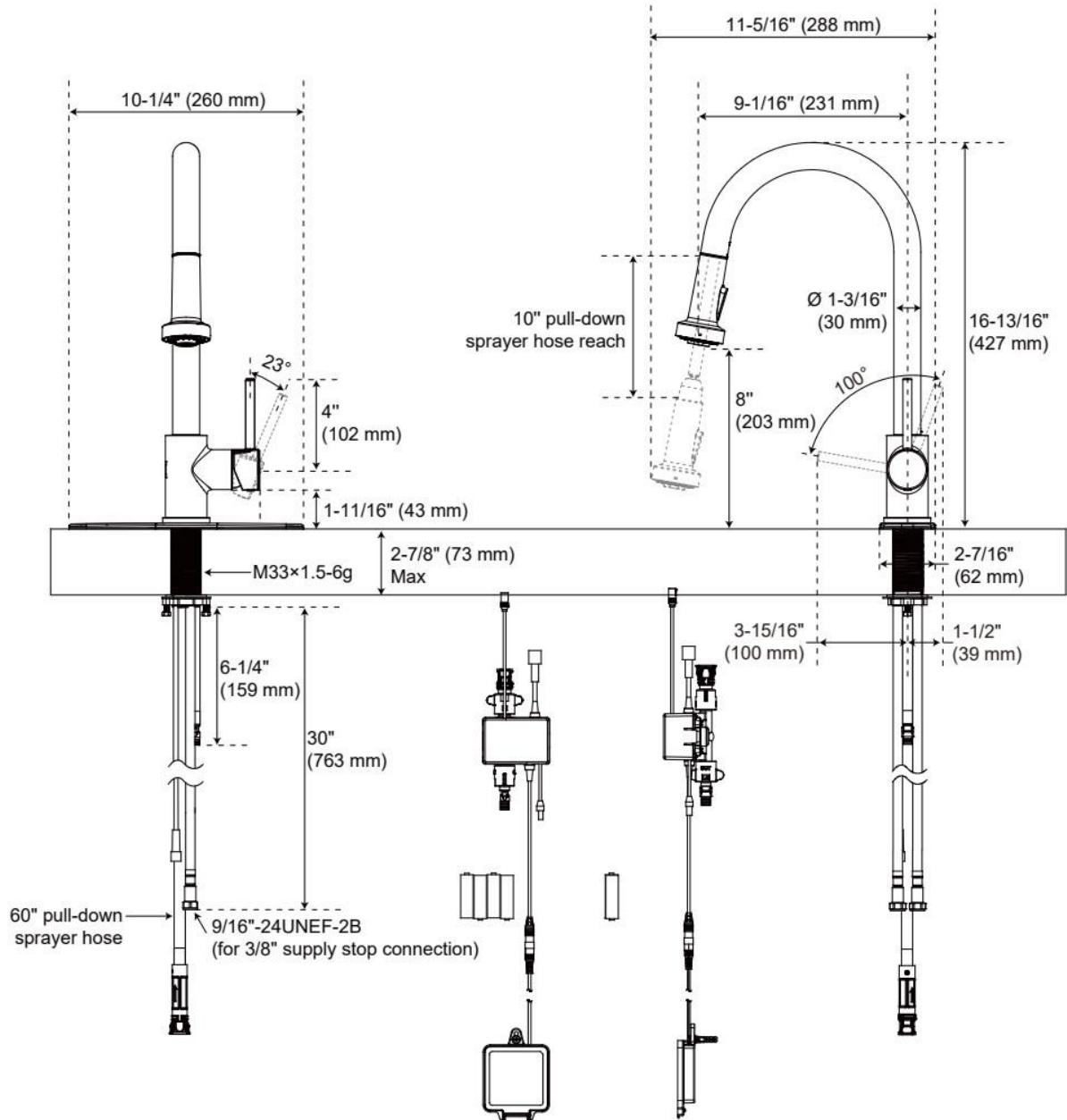
REVISED 6/7/2025

RIDGEWAY PULL-DOWN TOUCHLESS KITCHEN FAUCET

SKU: 951732-S

Code: SHXCRD107E, SH482399, SH482398, SH482397

With Escutcheon



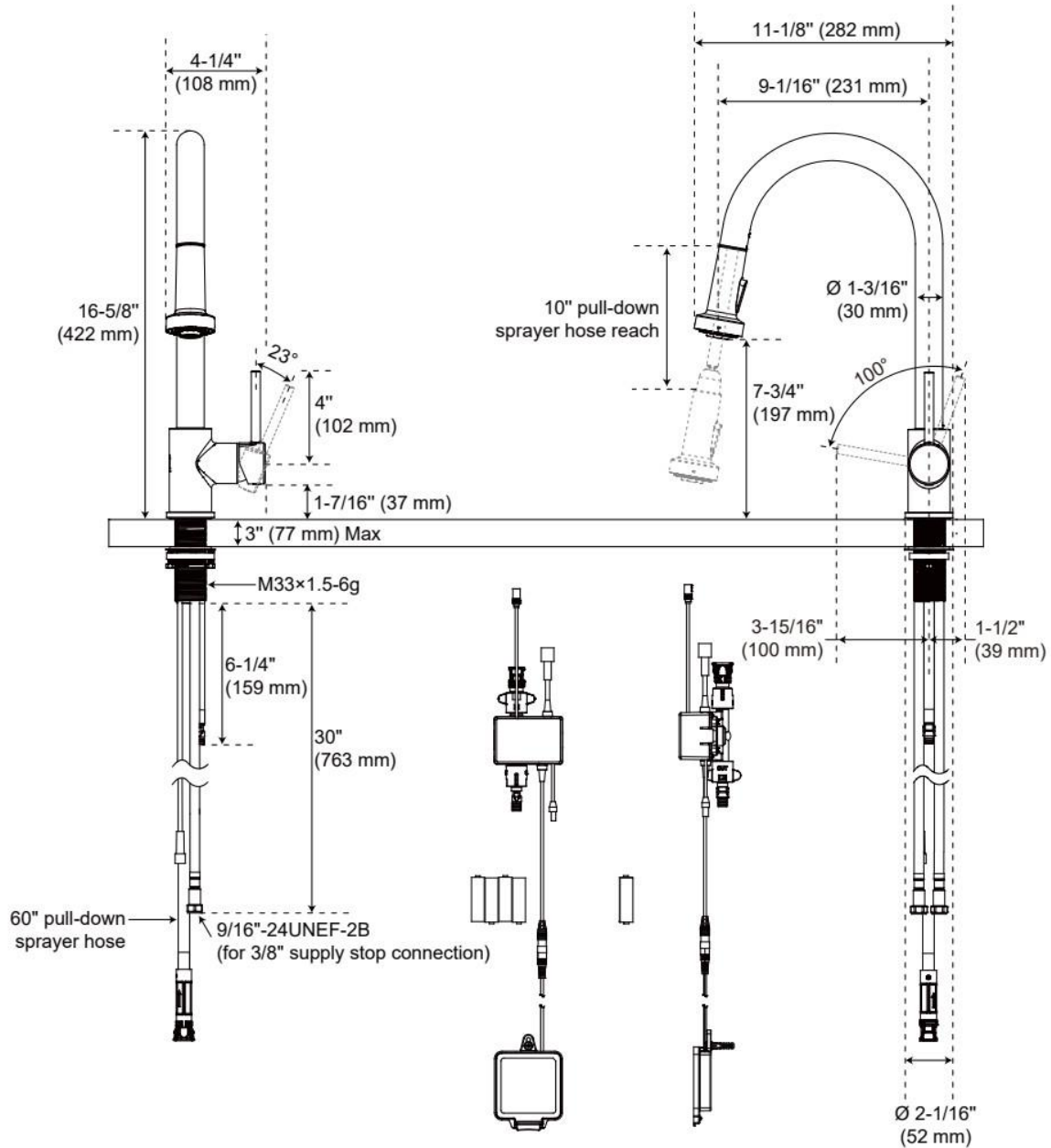
REVISED 6/7/2025

RIDGEWAY PULL-DOWN TOUCHLESS KITCHEN FAUCET

SKU: 951732-S

Code: SHXCRD107E, SH482399, SH482398, SH482397

Without Escutcheon



REVISED 6/7/2025