

# 60" RAKSHA DOUBLE-WALL HAMMERED COPPER SOAKING TUB

SKU: 953284

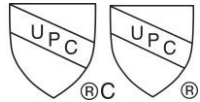
Code: SH484137, SH484212, SH484213, SH484214, SH484215, SH484216, SH484217, SH484218, SH484219, SH484220



## FEATURES

Tub Material: Copper  
Product Finish: Antique Copper Patina  
Shape: Oval  
Tub Drain Placement: Center  
Drain Included: Optional  
Water Depth to Overflow: 24-3/8"  
Water Capacity (Gallons): 71  
Built-In Adjusters: No  
Tub Weight Uncrated (lbs): 310  
Optional Accessory: 428473

CSA B45.12/IAPMO Z402, LISTED ID: SHRCKO6030, 510720, 510721, 510724, 510729



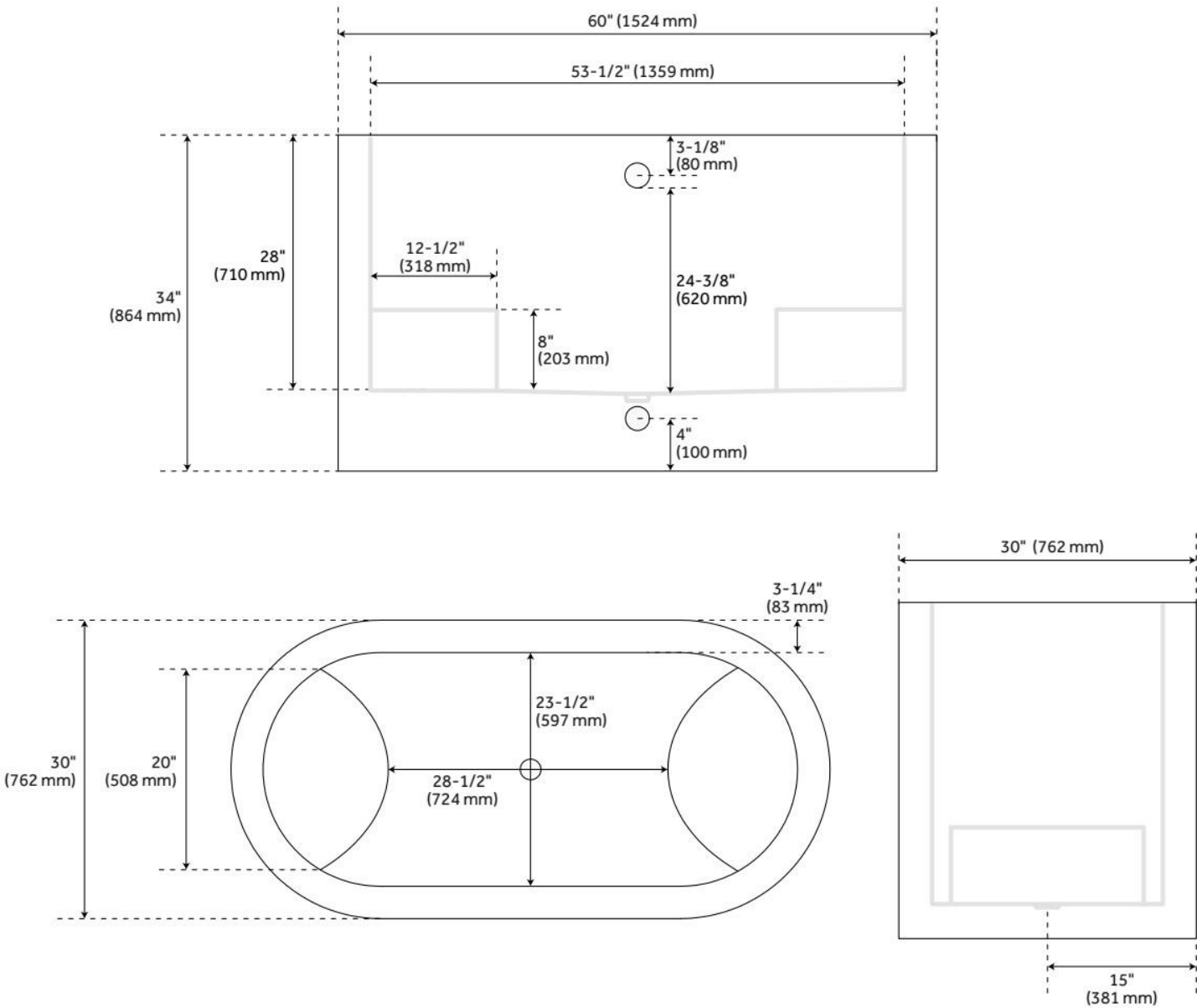
## ADDITIONAL FEATURES

- Made of 14-gauge copper.
- Hand-polished finish.
- Patina applied using French hot process, so color is ingrained in the copper.
- Tubs are handmade and therefore unique. Expect slight variations in finish and dimensions ( $\pm 1"$ ).
- Requires wall- or floor-mount tub filler.
- Overflow drain includes a Standard overflow which remains open to allow water into the drain.
- Insulation option: increases heat retention and prevents condensation due to water and air temperature fluctuations.
- To keep the tub in premium condition, it is recommended to not use anything abrasive for bathing or cleaning, including products like Epsom salts, bristle brushes, and harsh soaps.
- Optional Quick Connect Drop-In Drain Kit Includes:
  - Floor Plate, 1-1/2" PVC Pipe, 2" x 1-1/2" Trap Adapters, 1 Brass Threaded, 1 Brass Unthreaded Tailpiece and Plug.

REVISED 6/26/2025

# 60" RAKSHA DOUBLE-WALL HAMMERED COPPER SOAKING TUB

SKU: 953284  
Code: SH484137, SH484212, SH484213, SH484214, SH484215, SH484216, SH484217, SH484218, SH484219, SH484220



REVISED 6/26/2025