

LEXIA PRESSURE BALANCE TUB AND SHOWER SYSTEM

SKU: 953772

Code: SHLE8030, SH4001, SH488929



ASME A112.18.1/CSA B125.1

ASSE 1016 Type P

CEC Listed

WaterSense by IAPMO

Massachusetts Accepted



FEATURES

Features: Pressure-Balanced; Rough-In Included; Tub Spout Included

Material: Metal

Assembly Required: Yes

Handle Type: Lever

Shower Head Installation Type: Wall

Number of Shower Heads: 1

Shower Head Diameter: 7-7/8"

Shower Head Material: ABS

Shower Head Spray: Rainfall

Shower Arm Included: Yes

Shower Arm Extension: 12-3/8"

Shower Arm Height: 5-3/8"

Shower Head IPS: 1/2"

Shower Head Swivel: Yes

Tub Filler Spout Reach: 6-7/8"

Valve Trim Diameter: 6-11/16"

Diverter Included: Yes

Diverter Outlets: 1

Flow Rate: 8.45 gpm (32L/min) @ 20 psi

Shower Head Flow Rate: 1.8 gpm (6.8 L/min) @ 80 psi

REVISED 1/23/2024

LEXIA PRESSURE BALANCE TUB AND SHOWER SYSTEM

SKU: 953772

Code: SHLE8030, SH4001, SH488929

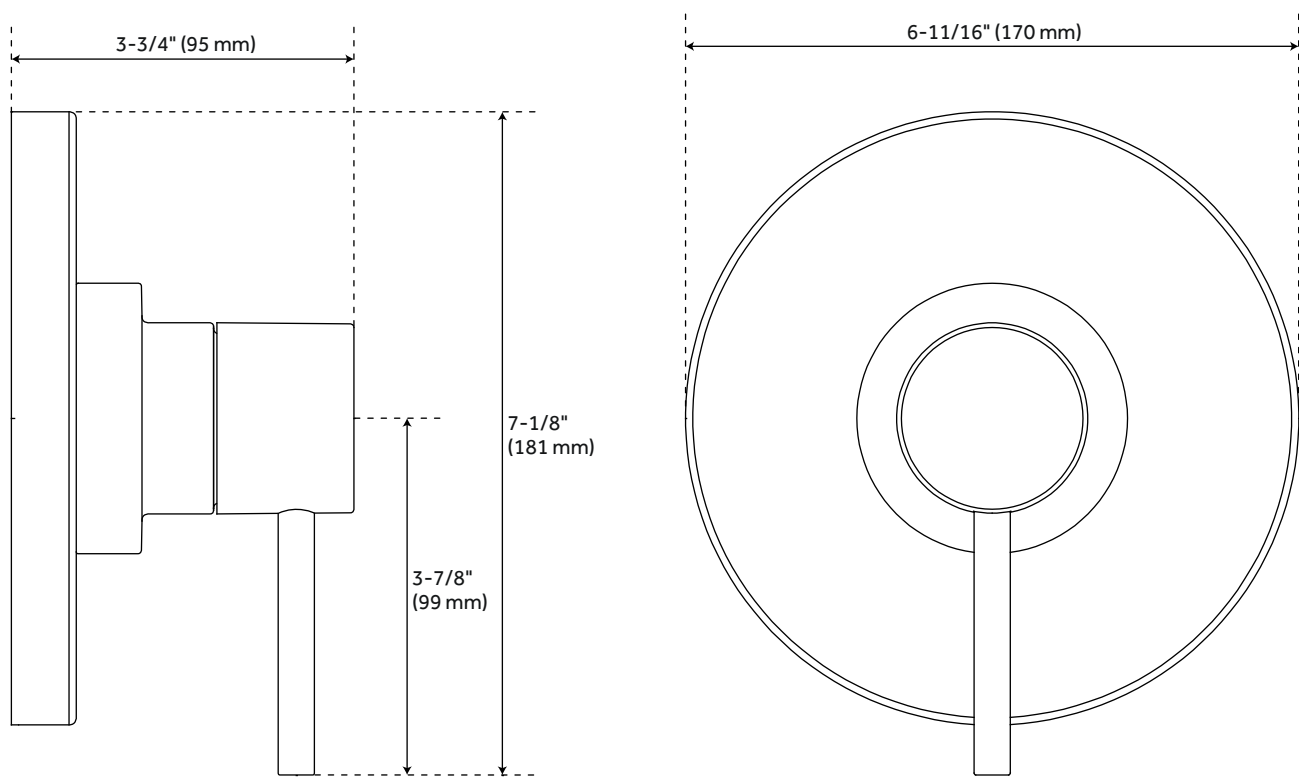


ADDITIONAL FEATURES

- Single function shower head.
- Tub spout diverter.
- Slip-fit tub spout.
- Included Rough-in valve:
- Pressure balance valve with integral stops.
- One-piece cartridge design for ease of maintenance.
- Back-to-back capability.
- Ceramic disc valve cartridge.
- Cast bronze valve body.
- Adjustable temperature limit stop.
- Quick remove plaster guard.
- Easy mounting brackets.

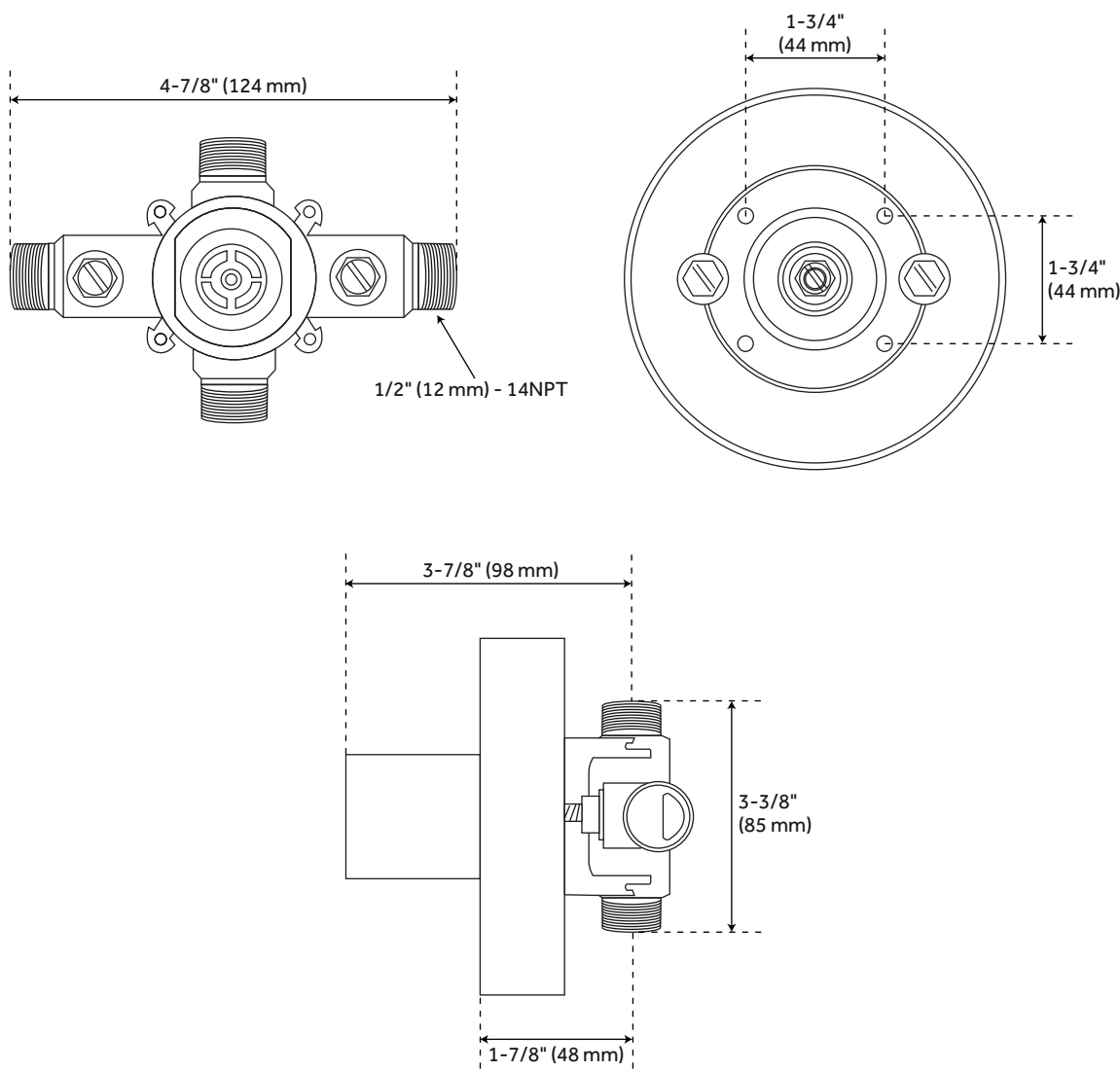
REVISED 1/23/2024

LEXIA PRESSURE BALANCE SHOWER TRIM



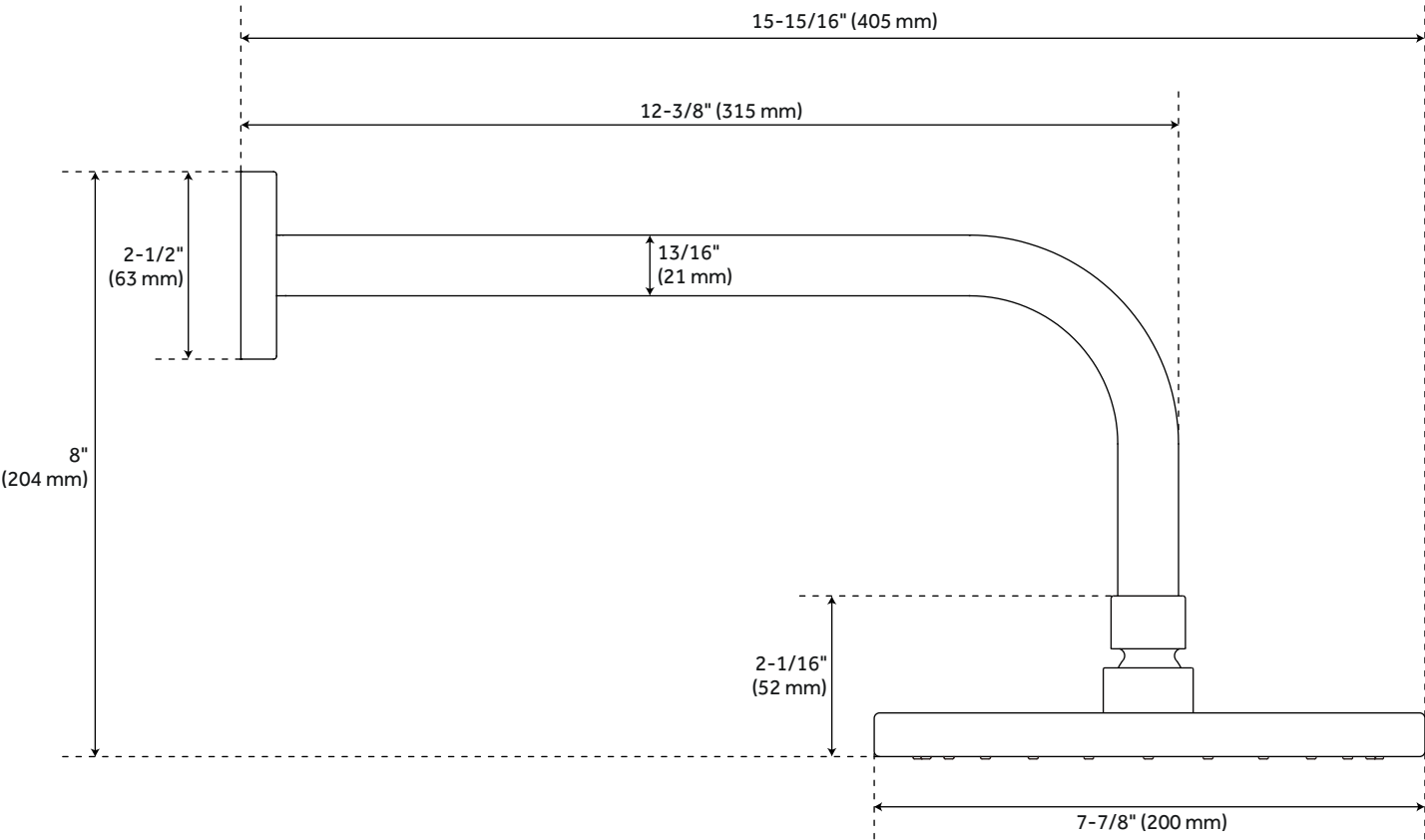
All dimensions and specifications are nominal and may vary. Use actual products for accuracy in critical situations.

LEXIA PRESSURE BALANCE ROUGH-IN VALVE



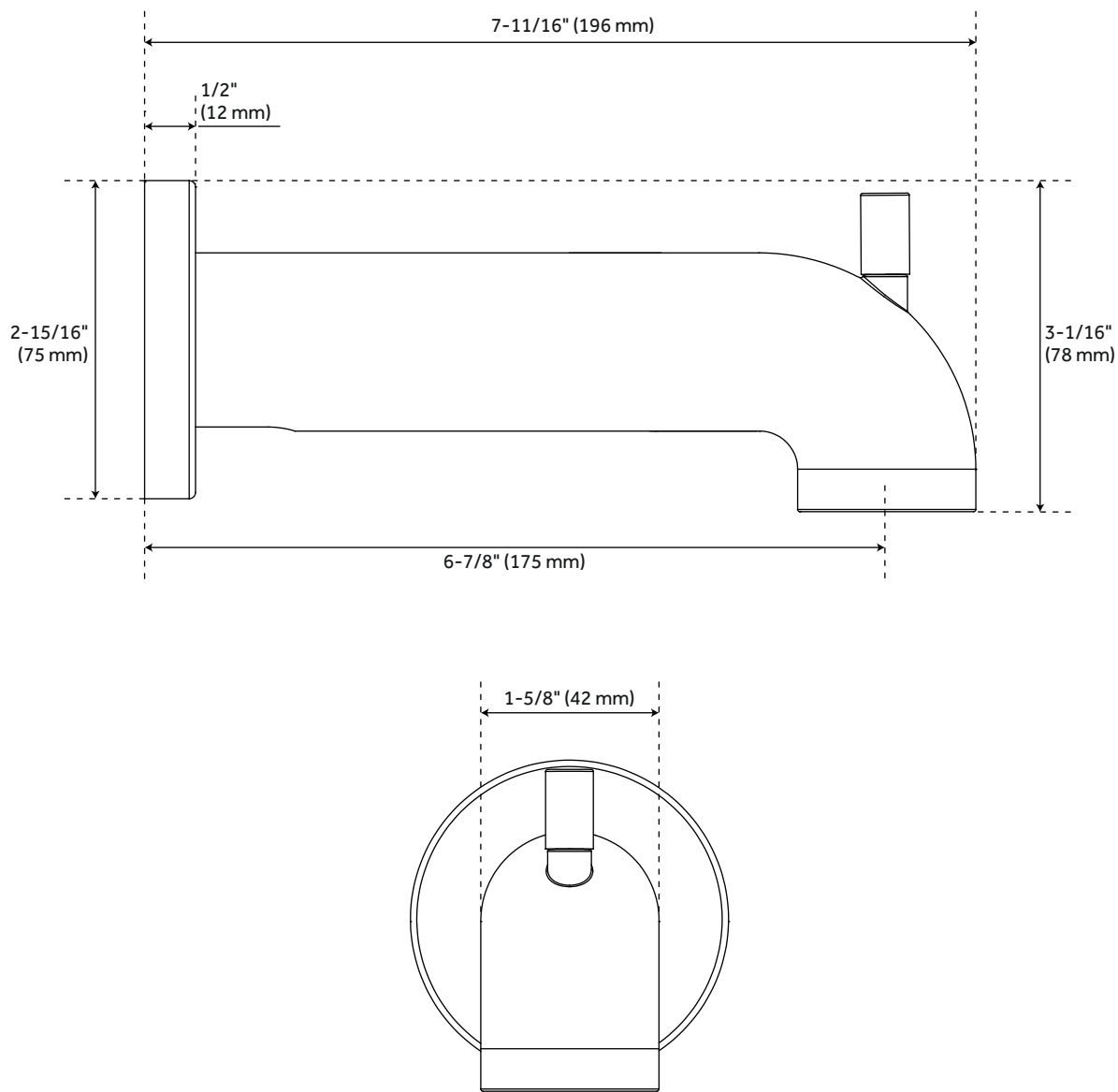
All dimensions and specifications are nominal and may vary. Use actual products for accuracy in critical situations.

LEXIA SHOWER HEAD AND ARM



All dimensions and specifications are nominal and may vary. Use actual products for accuracy in critical situations.

LEXIA TUB SPOUT WITH DIVERTER



All dimensions and specifications are nominal and may vary. Use actual products for accuracy in critical situations.