

# LEXIA PRESSURE BALANCE SHOWER SYSTEM WITH HAND SHOWER

SKU: 953777

Code: SHLE8020G,SH4001,SHHS4030G,SHH1010,SHWES2050,SHLE9005,SH6103



ASME A112.18.1/CSA B125.1  
ASSE 1016 Type P  
ICC/ANSI A117.1  
CEC Listed



## FEATURES

Features: Pressure-Balanced; Rough-In Included; Hand Shower Included

Material: Metal

Assembly Required: Yes

Shape: Round

Handle Type: Lever

Shower Head Installation Type: Wall

Number of Shower Heads: 1

Shower Head Diameter: 7-7/8"

Shower Head Material: ABS

Shower Head Spray: Rainfall

Shower Arm Included: Yes

Shower Arm Extension: 12-3/8"

Shower Arm Height: 5-3/8"

Shower Head IPS: 1/2"

Shower Head Swivel: Yes

Hand Shower Length: 8-7/8"

Hand Shower Hose Length: 60"

Hand Shower Material: ABS

Hand Shower Flow Rate: 1.8 gpm (6.8 L/min) @ 80 psi

Diverter Included: Yes

Diverter Outlets: 3

Shower Head Flow Rate: 1.8 gpm (6.8 L/min) @ 80 psi

REVISED 10/27/2022

# LEXIA PRESSURE BALANCE SHOWER SYSTEM WITH HAND SHOWER

SKU: 953777

Code: SHLE8020G,SH4001,SHHS4030G,SHH1010,SHWES2050,SHLE9005,SH6103



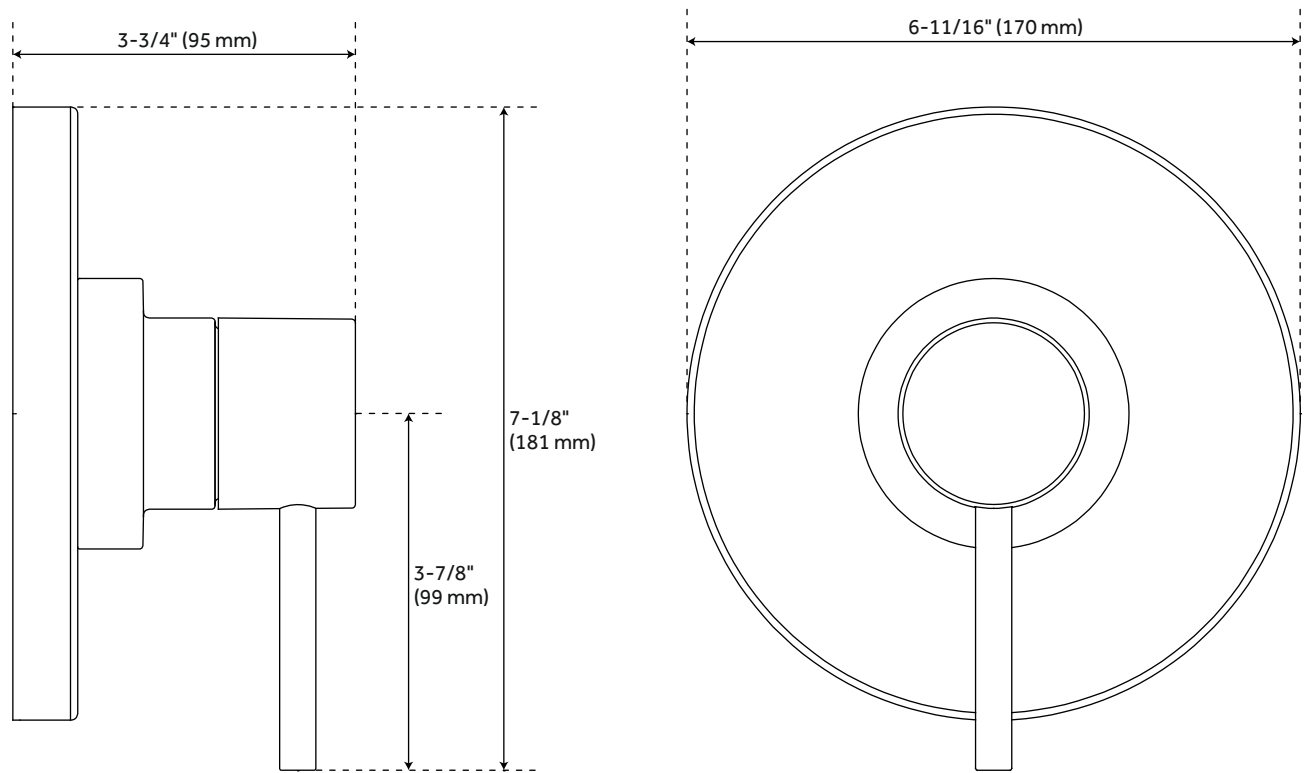
## ADDITIONAL FEATURES

- Metal lever handle.
- Single function 8" Rainfall shower head.
- Single function hand shower with easy-clean spray nozzles.
- 60" - 72" stretchable metal shower hose.
- Included Rough-in valves:
- Pressure balance valve features a one-piece cartridge design for ease of maintenance, back-to-back capability, a ceramic disc cartridge, cast bronze valve body, adjustable temperature limit stop, a quick remove plaster guard, easy mounting brackets and integral stops.
- Ceramic cartridge.
- Diverter valve features a ceramic disc cartridge and brass valve body. An available Single-Function Diverter valve Cartridge restricts water flow to one outlet at a time.

REVISED 10/27/2022

# LEXIA PRESSURE BALANCE SHOWER TRIM

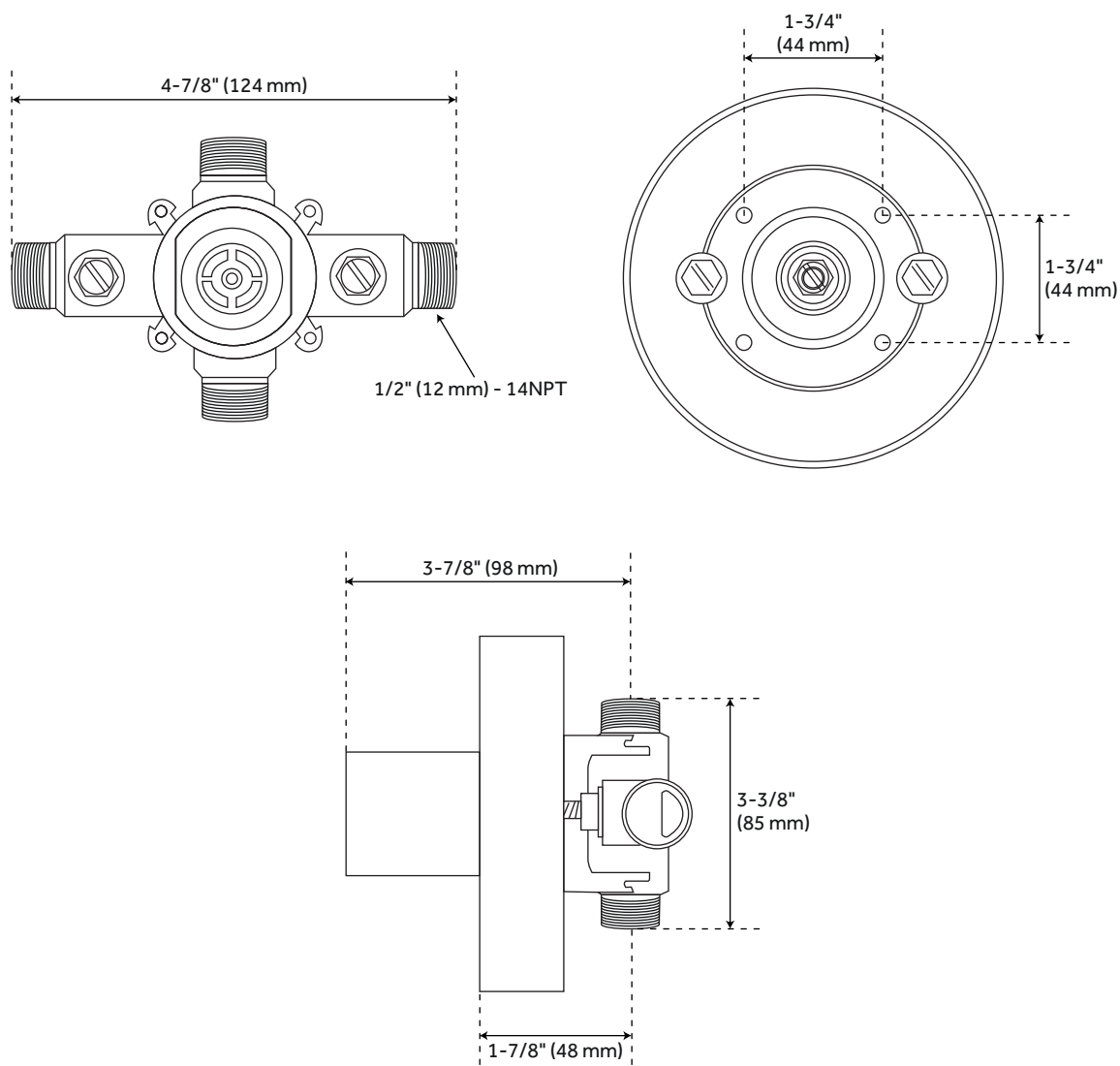
SKU: 953777  
SHLE8020G



All dimensions and specifications are nominal and may vary. Use actual products for accuracy in critical situations.

# LEXIA PRESSURE BALANCE ROUGH-IN VALVE

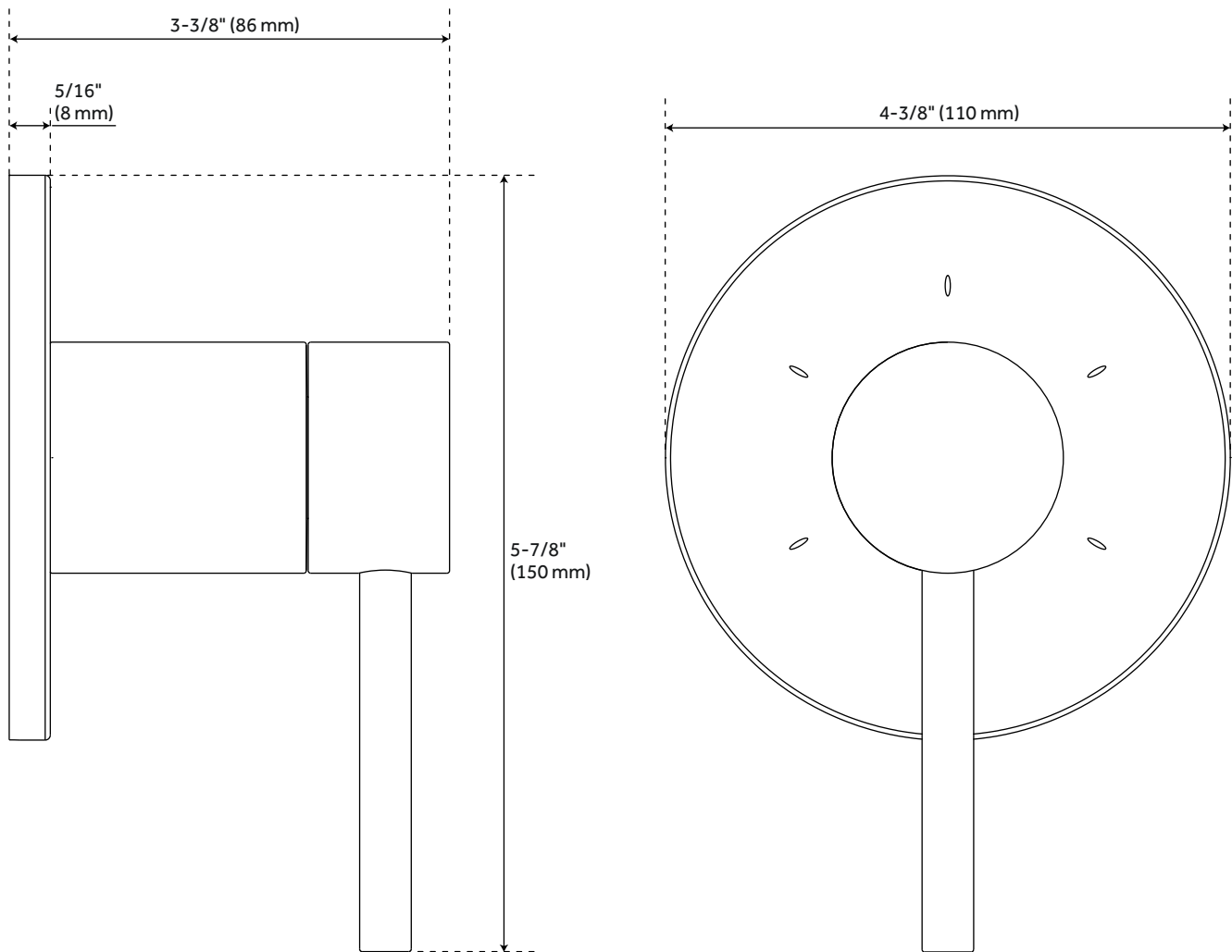
SKU: 953777  
SH4001



All dimensions and specifications are nominal and may vary. Use actual products for accuracy in critical situations.

# LEXIA 3-WAY IN-WALL SHOWER DIVERTER

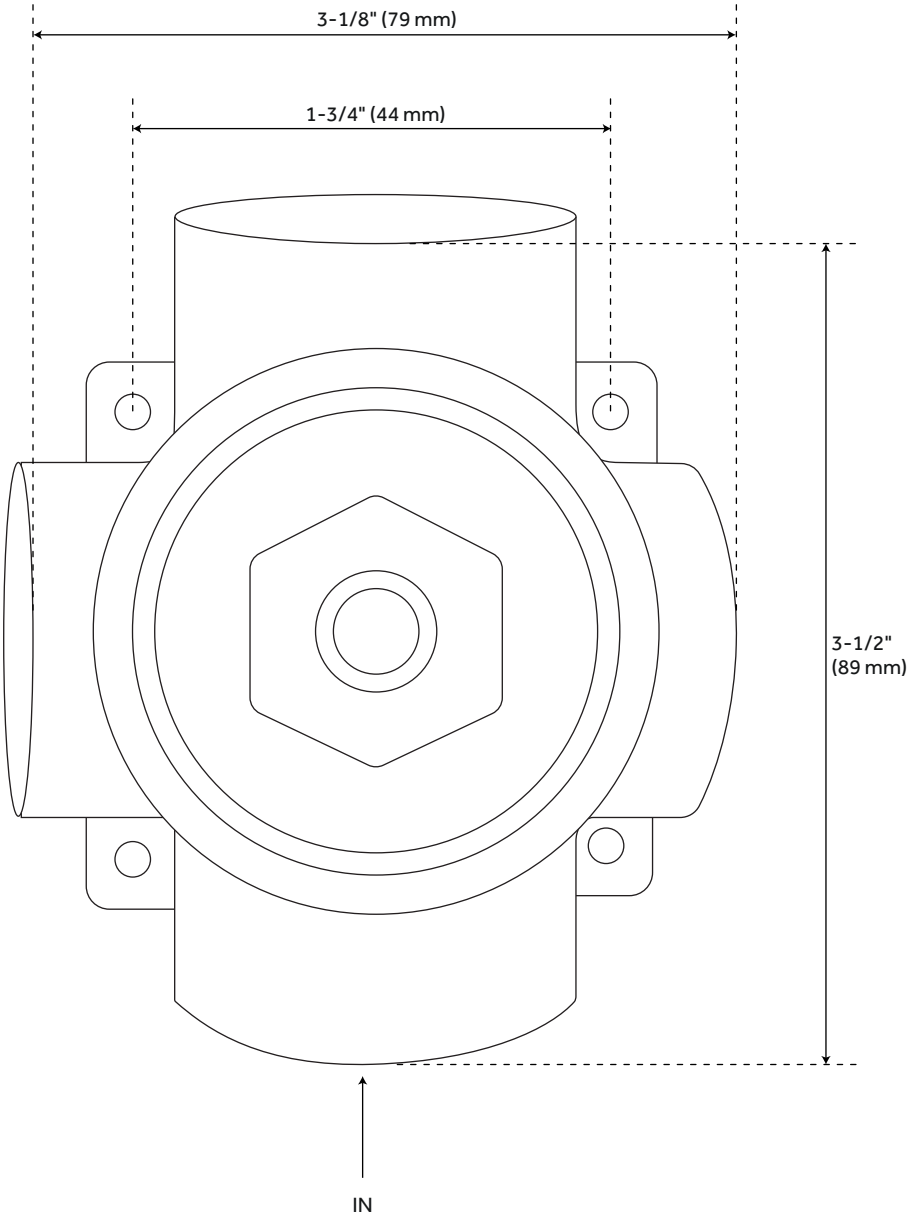
SKU: 953777  
SHLE9005



All dimensions and specifications are nominal and may vary. Use actual products for accuracy in critical situations.

# LEXIA DIVERTER ROUGH-IN VALVE

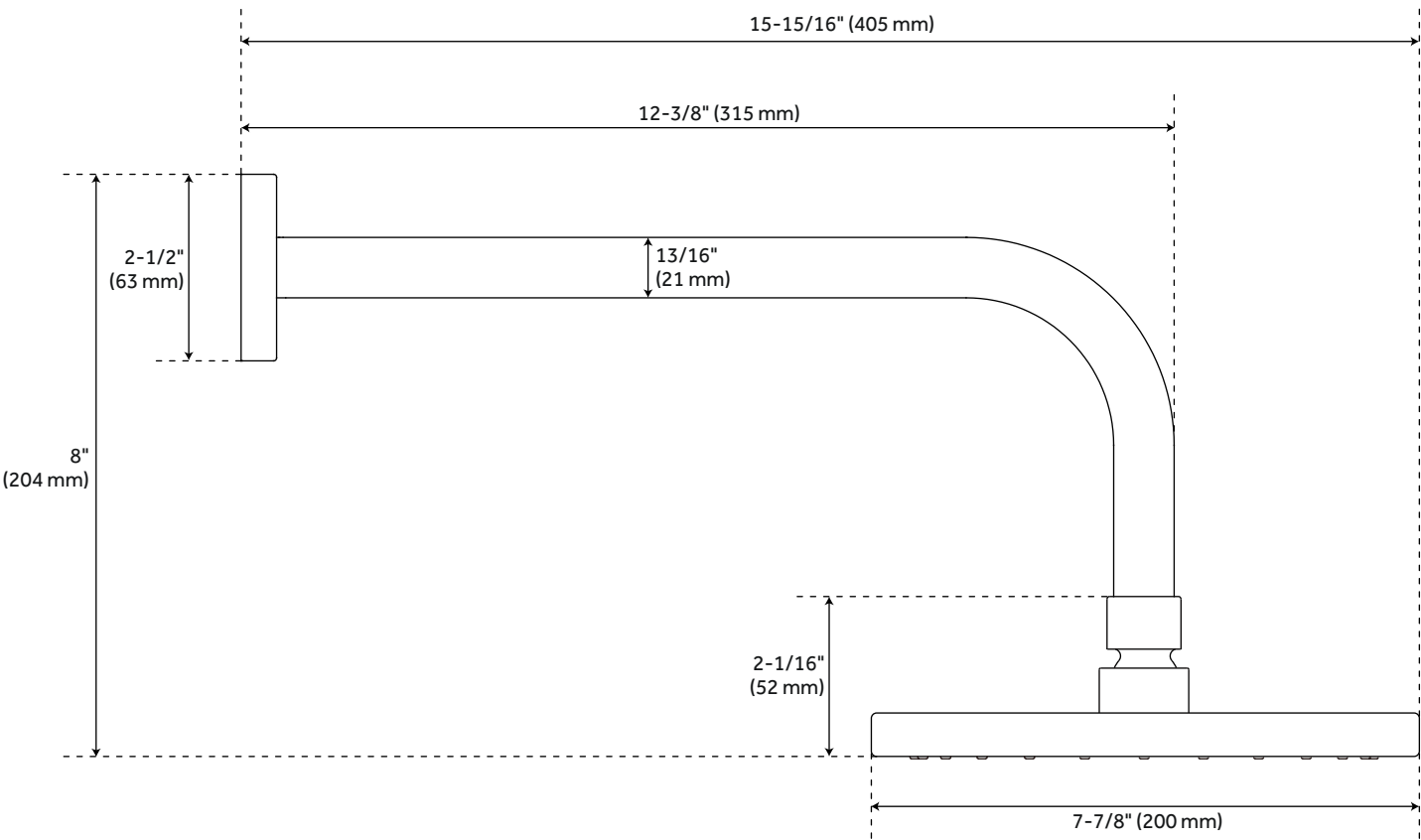
SKU: 953777  
SH6103



All dimensions and specifications are nominal and may vary. Use actual products for accuracy in critical situations.

# LEXIA SHOWER HEAD AND ARM

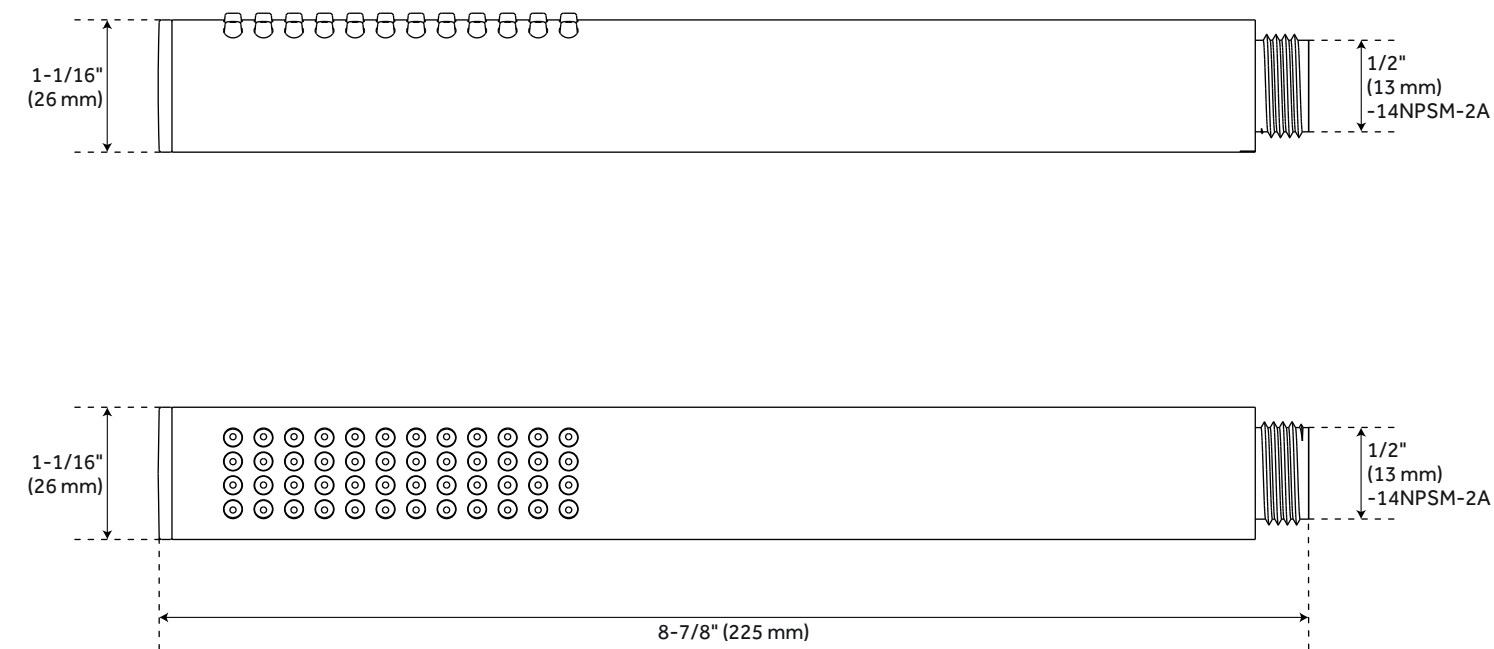
SKU: 953777  
SHLE8020G



All dimensions and specifications are nominal and may vary. Use actual products for accuracy in critical situations.

# LEXIA HAND SHOWER

SKU: 953777  
SHHS4030G, SHHS4030GZ



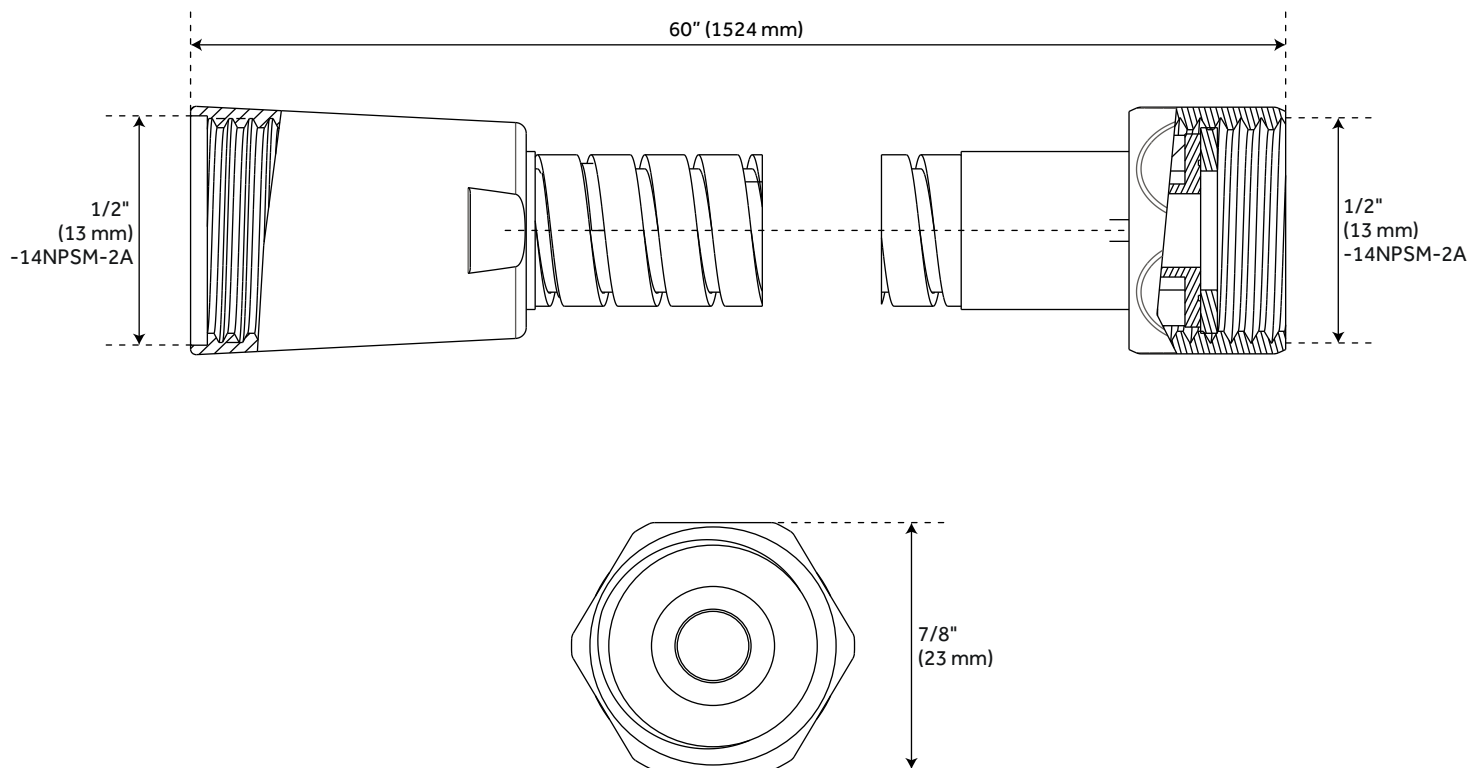
All dimensions and specifications are nominal and may vary. Use actual products for accuracy in critical situations.



# LEXIA HAND SHOWER HOSE

SKU: 953777

SHH1010

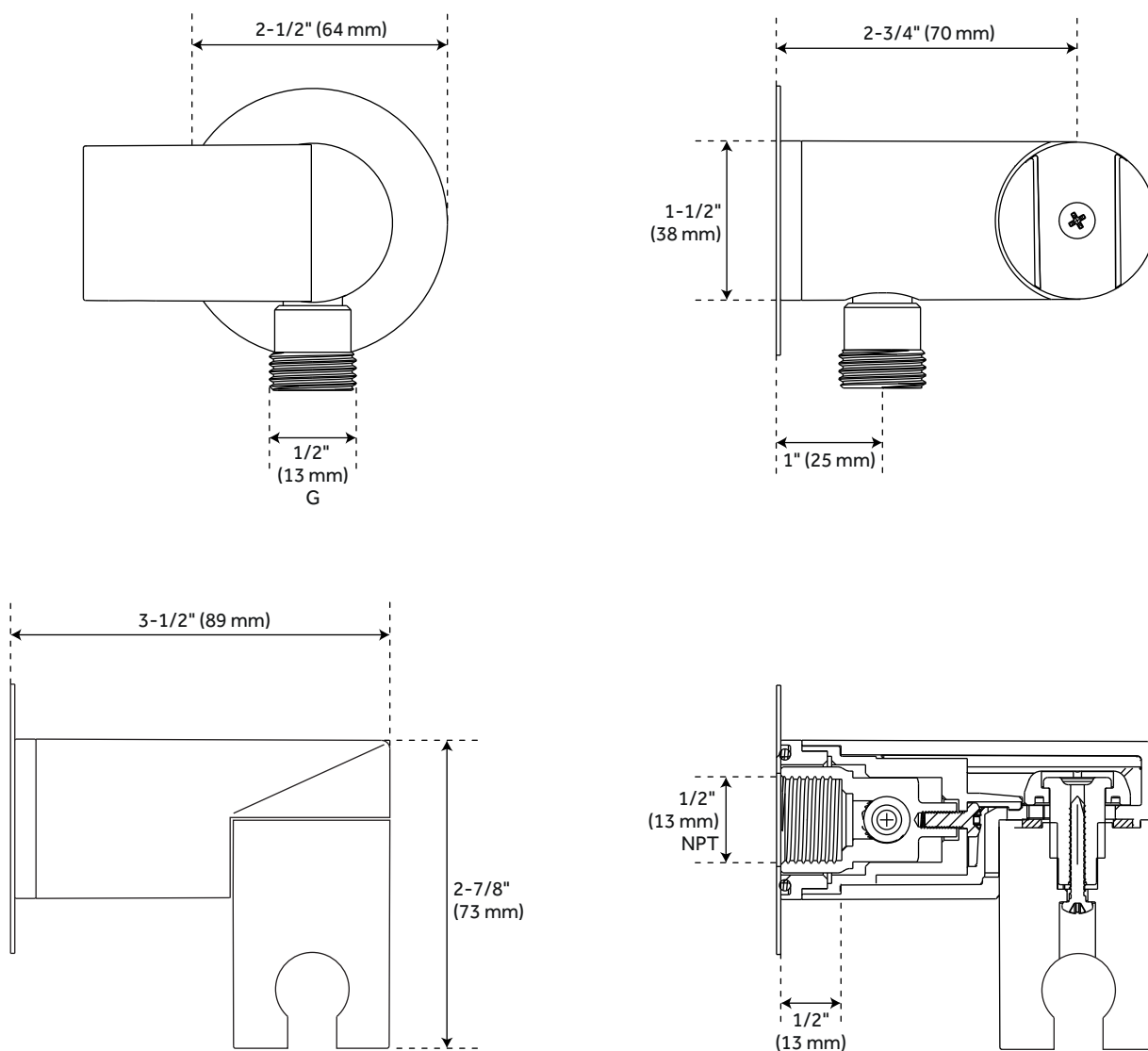


All dimensions and specifications are nominal and may vary. Use actual products for accuracy in critical situations.

# LEXIA SWIVEL WATER SUPPLY ELBOW AND BRACKET

SKU: 953777

SHWES2050



All dimensions and specifications are nominal and may vary. Use actual products for accuracy in critical situations.