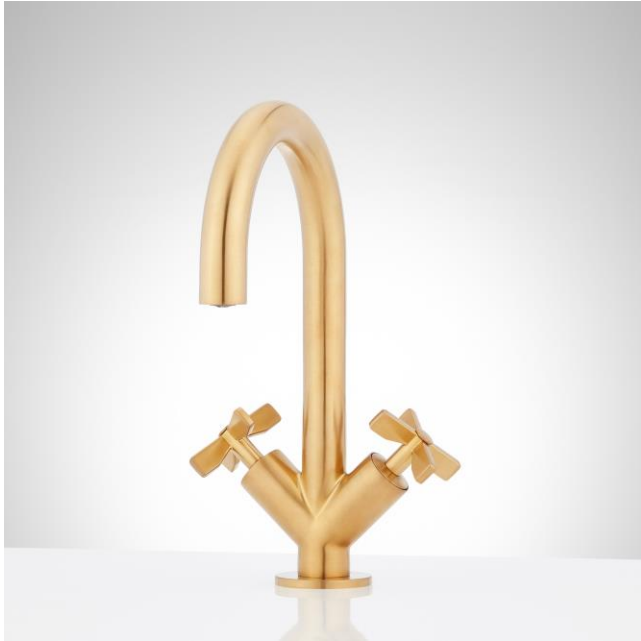


VASSOR SINGLE-HOLE BATHROOM FAUCET

SKU: 953796

Code: SHWSCVA107



FEATURES

Installation Type: Single-Hole
Features: Gooseneck
Design: Modern
Length: 5-3/8"
Width: 6-15/16"
Height: 9-3/8"
Base Plate Diameter: 2"
Faucet Centers: Single-Hole
Fits Drain Hole Size: 1-1/2"
Drain Included: Yes
Faucet Material: Metal
Handle Type: Cross
Handle Length: 2-1/4"
Flow Rate: 1.2 gpm (4.5L/min) @ 60 psi
Max. Countertop Thickness: 2-9/16"
Height To Spout: 5-3/4"
Spout Reach: 5-1/2"
Swivel Spout: No
Handle Height: 1-3/4"
Ceramic Disc Cartridges: Yes
Hot and Cold Indicators: No
Handle Material: Metal

ASME A112.18.1/CSA B125.1

NSF/ANSI 372

NSF/ANSI 61

NSF/ANSI/CAN 61

NSF/ANSI/CAN 61-9:Q≤1

ICC/ANSI A117.1

CEC Listed

CALGreen

Massachusetts Accepted



REVISED 4/21/2023

VASSOR SINGLE-HOLE BATHROOM FAUCET

SKU: 953796

Code: SHWSCVA107

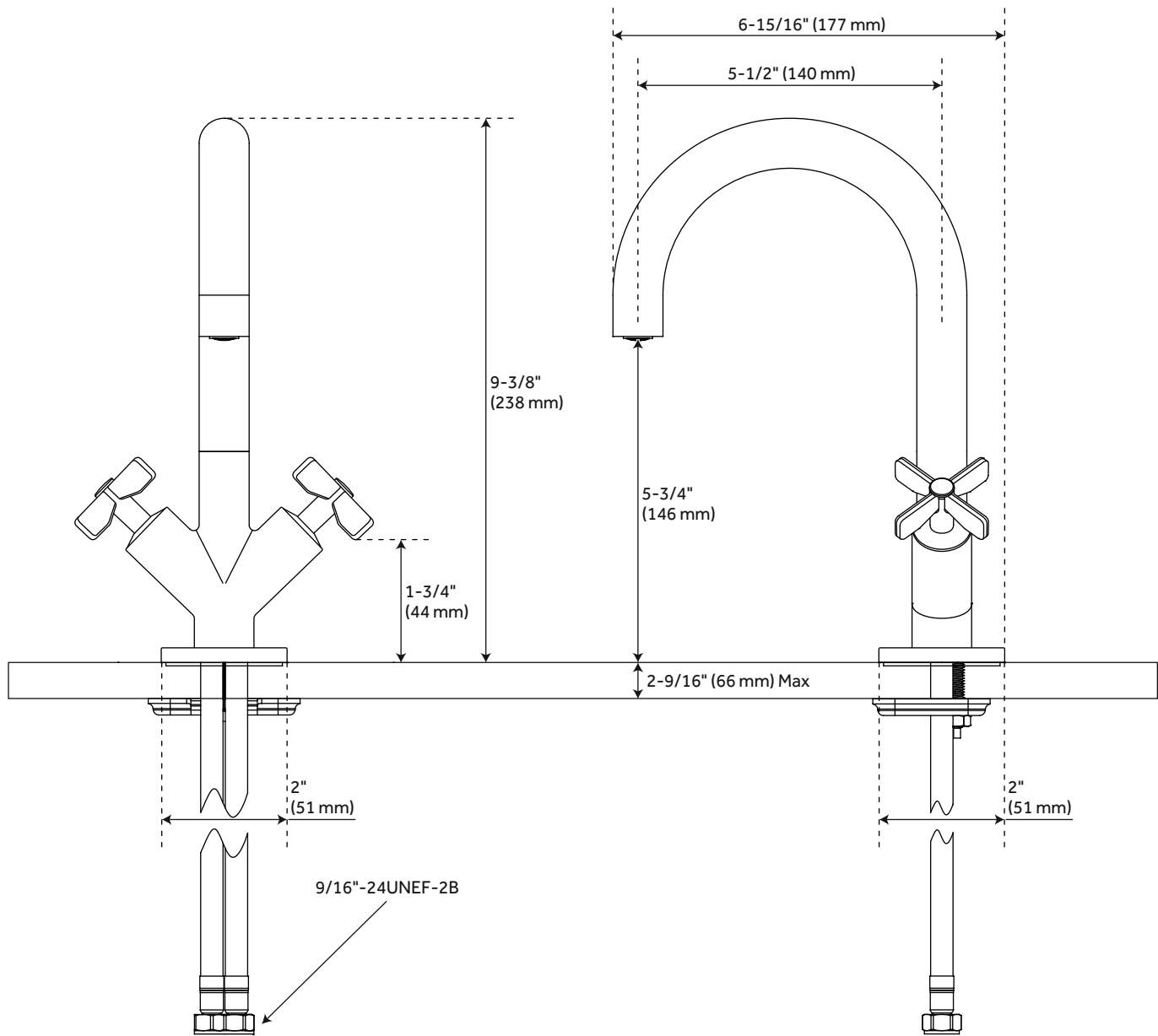


ADDITIONAL FEATURES

- Included deck plate converts faucet from a single-hole installation to a 4" centerset spread.
- Push-activated brass pop-up overflow drain assembly.

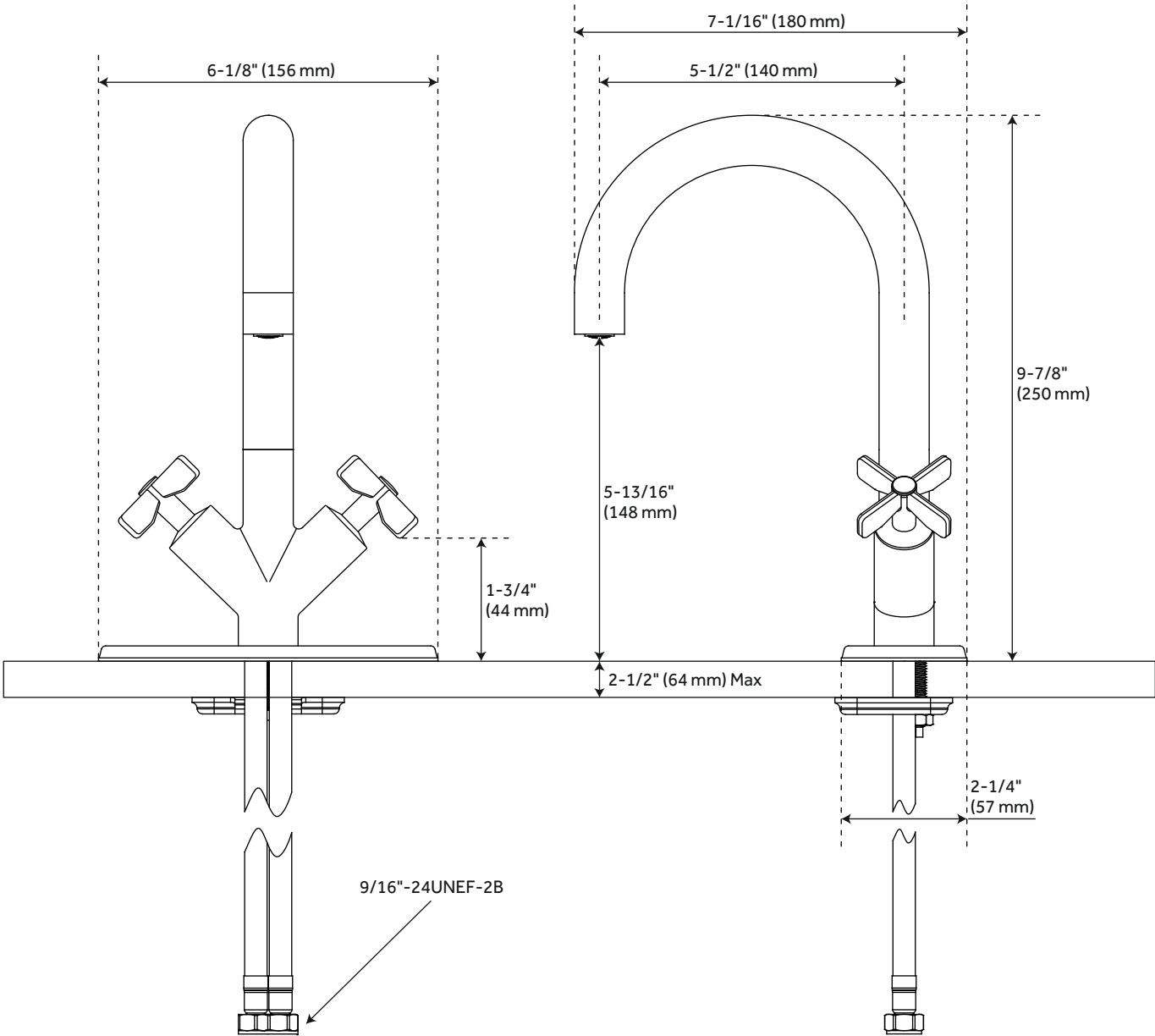
REVISED 4/21/2023

VASSOR SINGLE-HOLE BATHROOM FAUCET



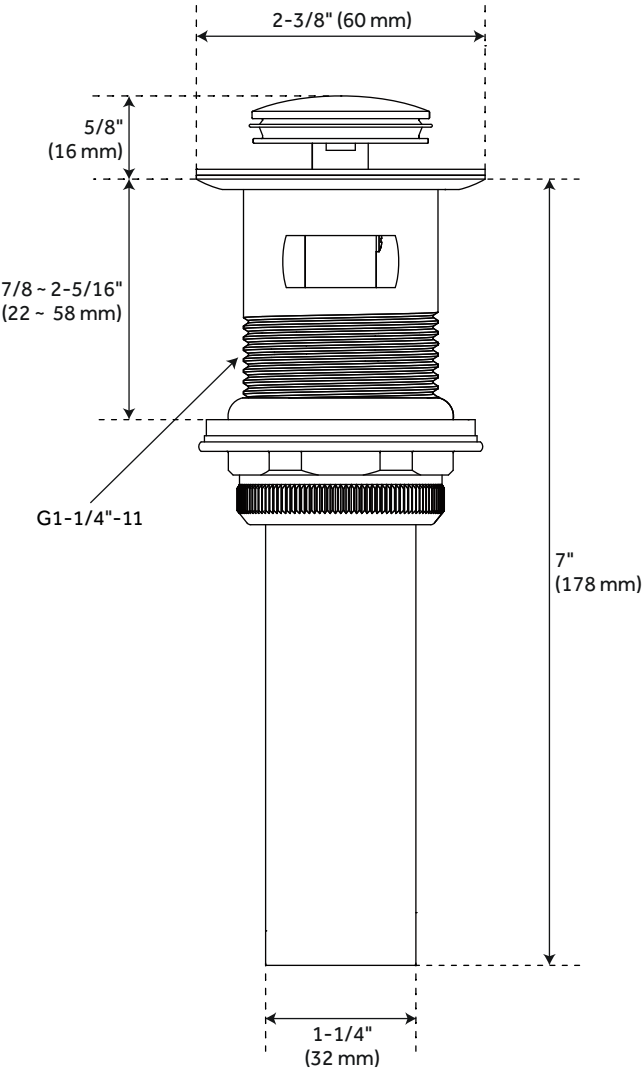
All dimensions and specifications are nominal and may vary. Use actual products for accuracy in critical situations.

VASSOR SINGLE-HOLE BATHROOM FAUCET WITH DECK PLATE



All dimensions and specifications are nominal and may vary. Use actual products for accuracy in critical situations.

VASSOR SINGLE-HOLE BATHROOM FAUCET POP-UP DRAIN



All dimensions and specifications are nominal and may vary. Use actual products for accuracy in critical situations.