

MARCEAU DUAL CONTROL PRESSURE BALANCE SHOWER SYSTEM - LEVER HANDLES

SKU: 955193-L

Code: SHMA441019, SH6001, SH441209, SHRSA123



FEATURES

Material: Metal

Shower Head Swivel: Yes

Shower Head Spray: Full

Shower Head Flow Rate: 1.75 gpm (6.6 L/min) @ 80 psi

Flow Rate: Rough-in Valve Capacity - 6.21 gpm (23.5L/min) at 80 psi

Cartridge Type: Ceramic Disc

ASME A112.18.1/CSA B125.1, CEC Listed, CALGreen, WaterSense by IAPMO, Massachusetts Accepted, LISTED ID: SHRSA123*, SHMA441019*, SH6001, SH441209*



ADDITIONAL FEATURES

- Metal construction for ultimate strength and durability.
- Single function shower head with easy clean nozzles.
- Included Rough-in valve:
 - Dual control pressure balance valve with integral stops.
 - One-piece ceramic disc cartridge design for ease of maintenance.
 - Back-to-back capability.
 - Adjustable temperature limit stop.
 - Quick remove plaster guard.
 - Easy mounting brackets.
 - Optional air test cap available (ACF4001AIR)

REVISED 6/25/2025

WALL-MOUNT RAINFALL SHOWER ARM

SKU: 948955

Code: SHRSA123, SHRSA181, SH485514, SHRSA150

FEATURES

Material: Stainless Steel

Connection Type: 1/2" NPT



ASME A112.18.1/CSA B125.1, Massachusetts Accepted, LISTED ID: SHRSA123*, SHRSA181*, SHRSA150*



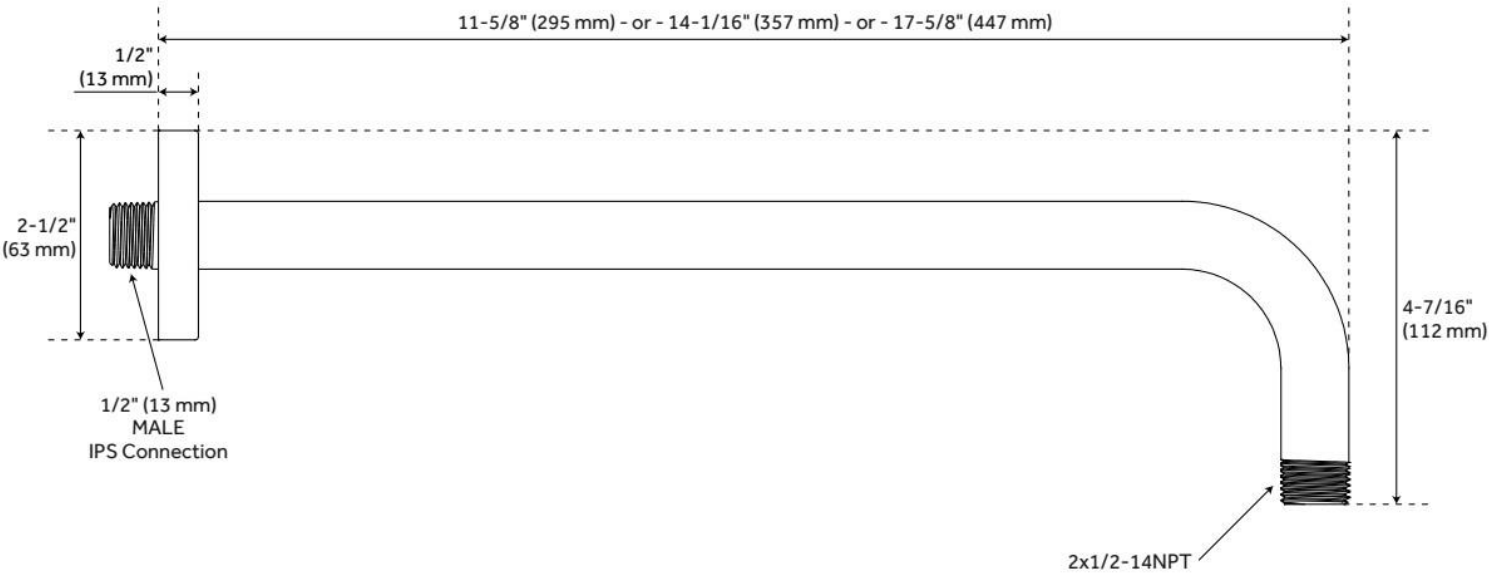
ADDITIONAL FEATURES

- All dimensions are ($\pm 1/2"$).
- Escutcheon included.

REVISED 12/3/2024

WALL-MOUNT RAINFALL SHOWER ARM

SKU: 948955
Code: SHRSA123, SHRSA181, SH485514, SHRSA150



REVISED 12/3/2024

7" ROUND SINGLE-FUNCTION 1.75 GPM SHOWER HEAD

SKU: 955181
Code: SH441209



FEATURES

Material: ABS
Shower Head Swivel: Yes
Shower Head Spray: Full
Shower Head Flow Rate: 1.75 gpm (6.6 L/min) @ 80 psi

ASME A112.18.1/CSA B125.1, CEC Listed, CALGreen, WaterSense by IAPMO, Massachusetts Accepted, LISTED ID: SH441209*



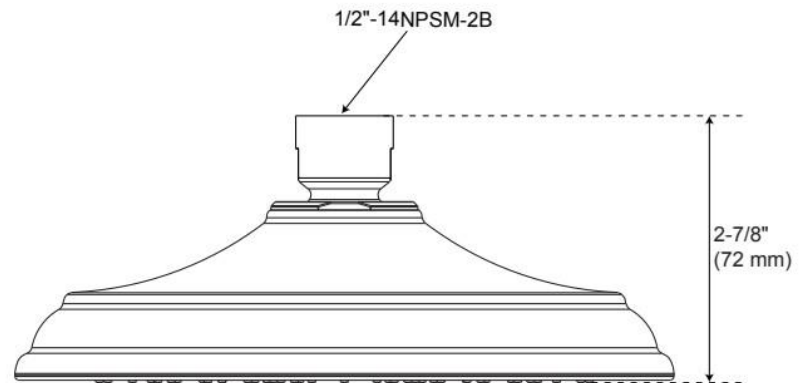
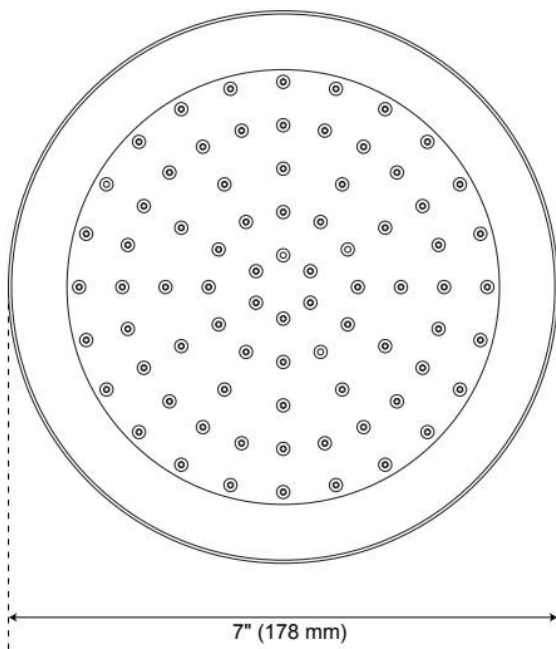
ADDITIONAL FEATURES

- Single function swivel shower head with easy clean nozzles.

REVISED 6/12/2025

7" ROUND SINGLE-FUNCTION 1.75 GPM SHOWER HEAD

SKU: 955181
Code: SH441209



REVISED 6/12/2025

MARCEAU DUAL CONTROL PRESSURE BALANCE SHOWER TRIM - LEVER HANDLES

SKU: 955200-L

Code: SHMA441019, SH6001



FEATURES

Material: Metal

Flow Rate: Rough-in Valve Capacity - 6.21 gpm (23.5L/min) at 80 psi

Cartridge Type: Ceramic Disc

Required for Installation: SH6001

ASME A112.18.1/CSA B125.1, ICC/ANSI A117.1, Massachusetts Accepted, LISTED ID: SHMA441019*, SH6001



ADDITIONAL FEATURES

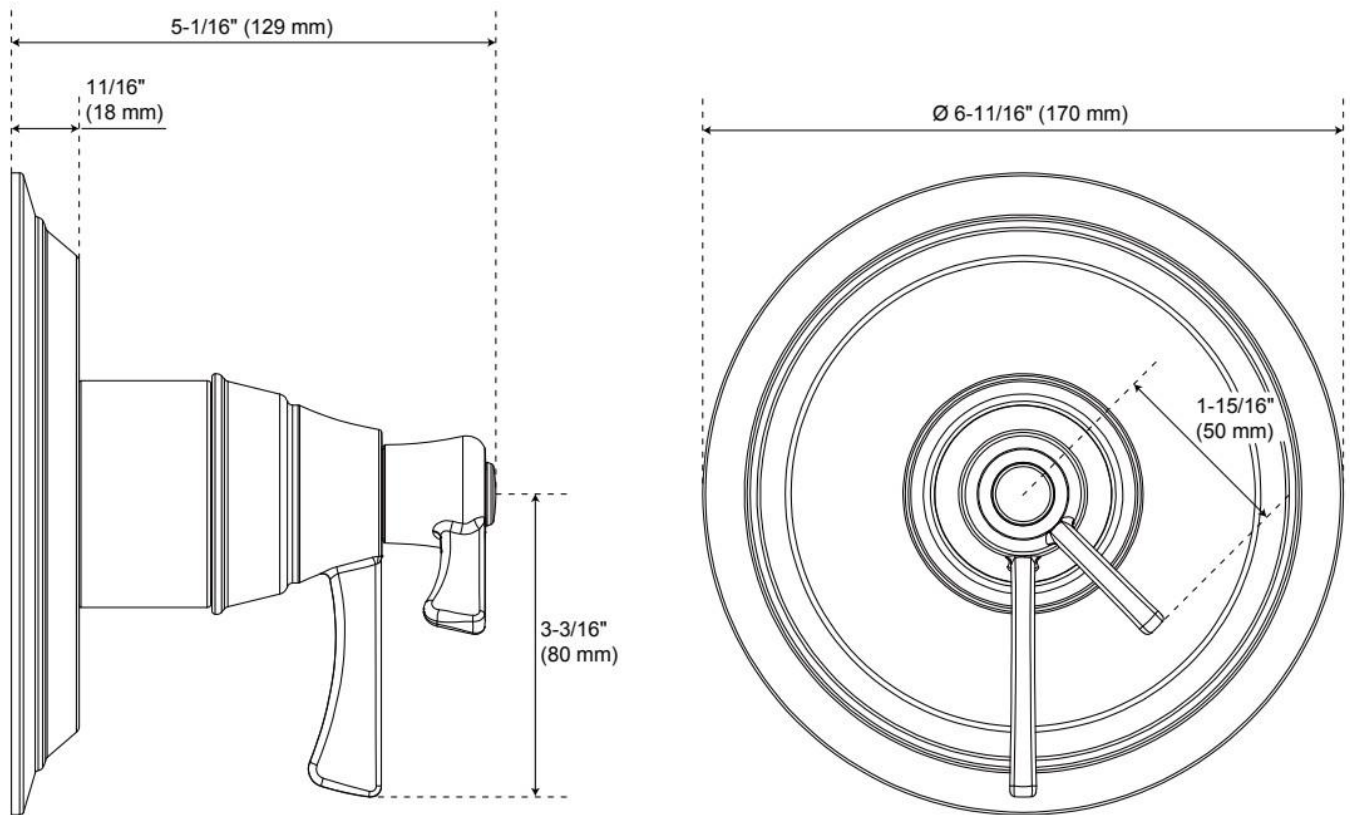
- Metal construction for ultimate strength and durability.
- May purchase with or without valve. Value required for use. (SH6001)
- When purchased with Rough-in Valve:
 - Dual control pressure balance valve with integral stops.
 - One-piece ceramic disc cartridge design for ease of maintenance.
 - Back-to-back capability.
 - Adjustable temperature limit stop.
 - Quick remove plaster guard.
 - Easy mounting brackets.
 - Optional air test cap available (ACF4001AIR)

REVISED 6/12/2025

MARCEAU DUAL CONTROL PRESSURE BALANCE SHOWER TRIM - LEVER HANDLES

SKU: 955200-L

Code: SHMA441019, SH6001



REVISED 6/12/2025

DUAL CONTROL PRESSURE BALANCE ROUGH-IN VALVE

SKU: 559885
Code: SH6001

FEATURES

Material: Metal

Flow Rate: Rough-in Valve Capacity - 6.21 gpm (23.5L/min) at 80 psi

Cartridge Type: Ceramic Disc

Optional Accessory: ACF4001AIR



ASME A112.18.1/CSA B125.1, Massachusetts Accepted, LISTED ID: SH6001



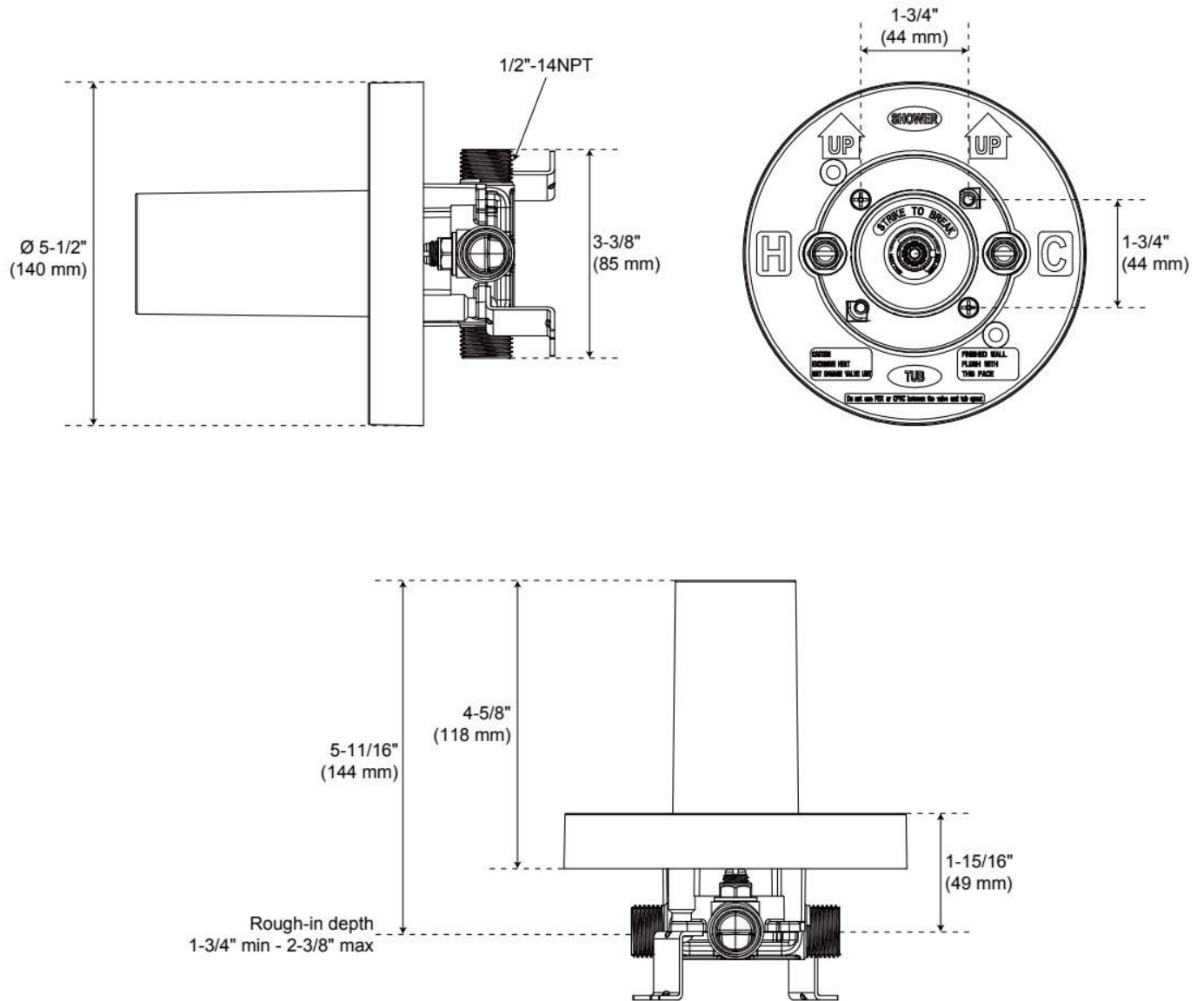
ADDITIONAL FEATURES

- Dual control pressure balance valve with integral stops.
- One-piece ceramic disc cartridge design for ease of maintenance.
- Back-to-back capability.
- Adjustable temperature limit stop.
- Quick remove plaster guard.
- Easy mounting brackets.
- Optional air test cap available (ACF4001AIR)

REVISED 6/12/2025

DUAL CONTROL PRESSURE BALANCE ROUGH-IN VALVE

SKU: 559885
Code: SH6001



REVISED 6/12/2025