

# MARCEAU DUAL CONTROL PRESSURE BALANCE SHOWER SYSTEM WITH HAND SHOWER - LEVER

SKU: 955195-L

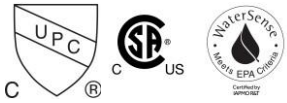
Code: SHMA441019, SH6001, SH441209, SHRSA123, SHH1010, SHWES2050, SHMA441004, SHMA441005, SH6103, SHHS4090G



## FEATURES

Material: Metal  
Shower Head Swivel: Yes  
Shower Head Spray: Full  
Shower Head Flow Rate: 1.75 gpm (6.6 L/min) @ 80 psi  
Hand Shower Flow Rate: 1.8 gpm (6.8 L/min) @ 80 psi  
Flow Rate: Rough-in Valve Capacity - 6.21 gpm (23.5L/min) at 80 psi  
Diverter Outlets: 3  
Cartridge Type: Ceramic Disc

ASME A112.18.1/CSA B125.1, ASME A112.18.2/CSA B125.2, CEC Listed, WaterSense by IAPMO, Massachusetts Accepted, LISTED ID: SH6103, SHH1010\*, SHWES2050xy, SHRSA123\*, SHHS4090G\*\*, SHMA441019\*, SH6001, SHMA441005\*, SH441209\*, SHHS4090G\*



## ADDITIONAL FEATURES

- Metal construction for ultimate strength and durability.
- Single function shower head with easy clean nozzles.
- Three function hand shower. (full spray, massage spray and full & massage spray)
- Double spiral 60" - 72" stretchable metal shower hose.
- Included Rough-in valves:
  - Dual control pressure balance valve features a one-piece ceramic disc cartridge design for ease of maintenance, back-to-back capability, cast bronze valve body, adjustable temperature limit stop, a quick remove plaster guard, easy mounting brackets and integral stops. Optional air test cap available (ACF4001AIR)
  - Diverter valve features a ceramic disc cartridge and brass valve body. Single-Function CALGreen Diverter Valve Cartridge that restricts water flow to one outlet at a time available. (SH6150). Optional extension kit: SH6101EXT.

REVISED 6/25/2025

# 7" ROUND SINGLE-FUNCTION 1.75 GPM SHOWER HEAD

SKU: 955181  
Code: SH441209



## FEATURES

Material: ABS  
Shower Head Swivel: Yes  
Shower Head Spray: Full  
Shower Head Flow Rate: 1.75 gpm (6.6 L/min) @ 80 psi

ASME A112.18.1/CSA B125.1, CEC Listed, CALGreen, WaterSense by IAPMO, Massachusetts Accepted, LISTED ID: SH441209\*



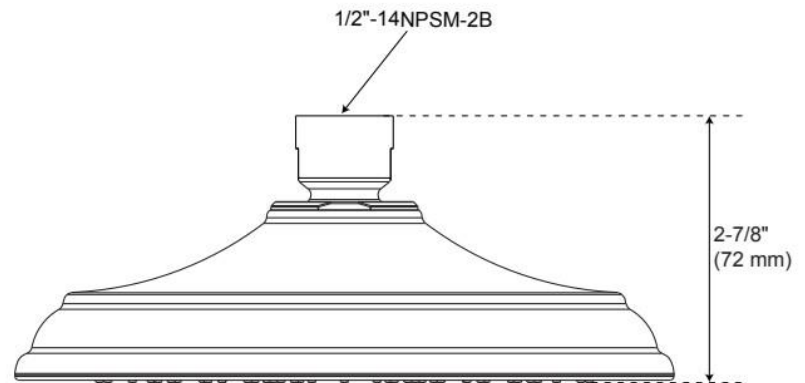
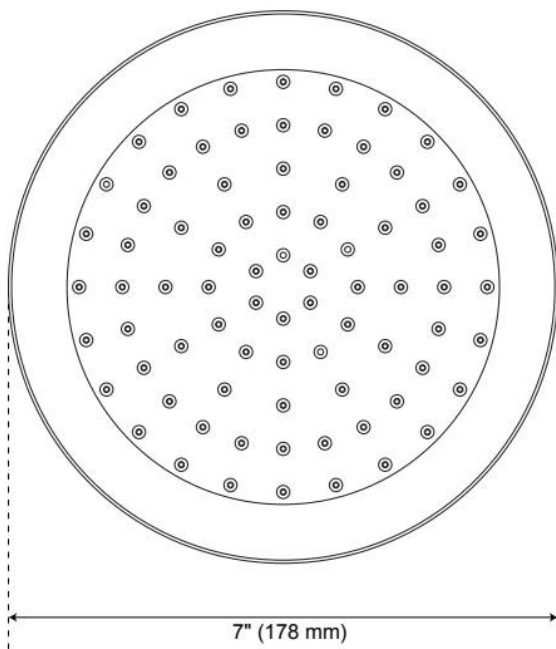
## ADDITIONAL FEATURES

- Single function swivel shower head with easy clean nozzles.

REVISED 6/12/2025

# 7" ROUND SINGLE-FUNCTION 1.75 GPM SHOWER HEAD

SKU: 955181  
Code: SH441209



REVISED 6/12/2025

# MARCEAU DUAL CONTROL PRESSURE BALANCE SHOWER TRIM - LEVER HANDLES

SKU: 955200-L

Code: SHMA441019, SH6001



## FEATURES

Material: Metal

Flow Rate: Rough-in Valve Capacity - 6.21 gpm (23.5L/min) at 80 psi

Cartridge Type: Ceramic Disc

Required for Installation: SH6001

ASME A112.18.1/CSA B125.1, ICC/ANSI A117.1, Massachusetts Accepted, LISTED ID: SHMA441019\*, SH6001



## ADDITIONAL FEATURES

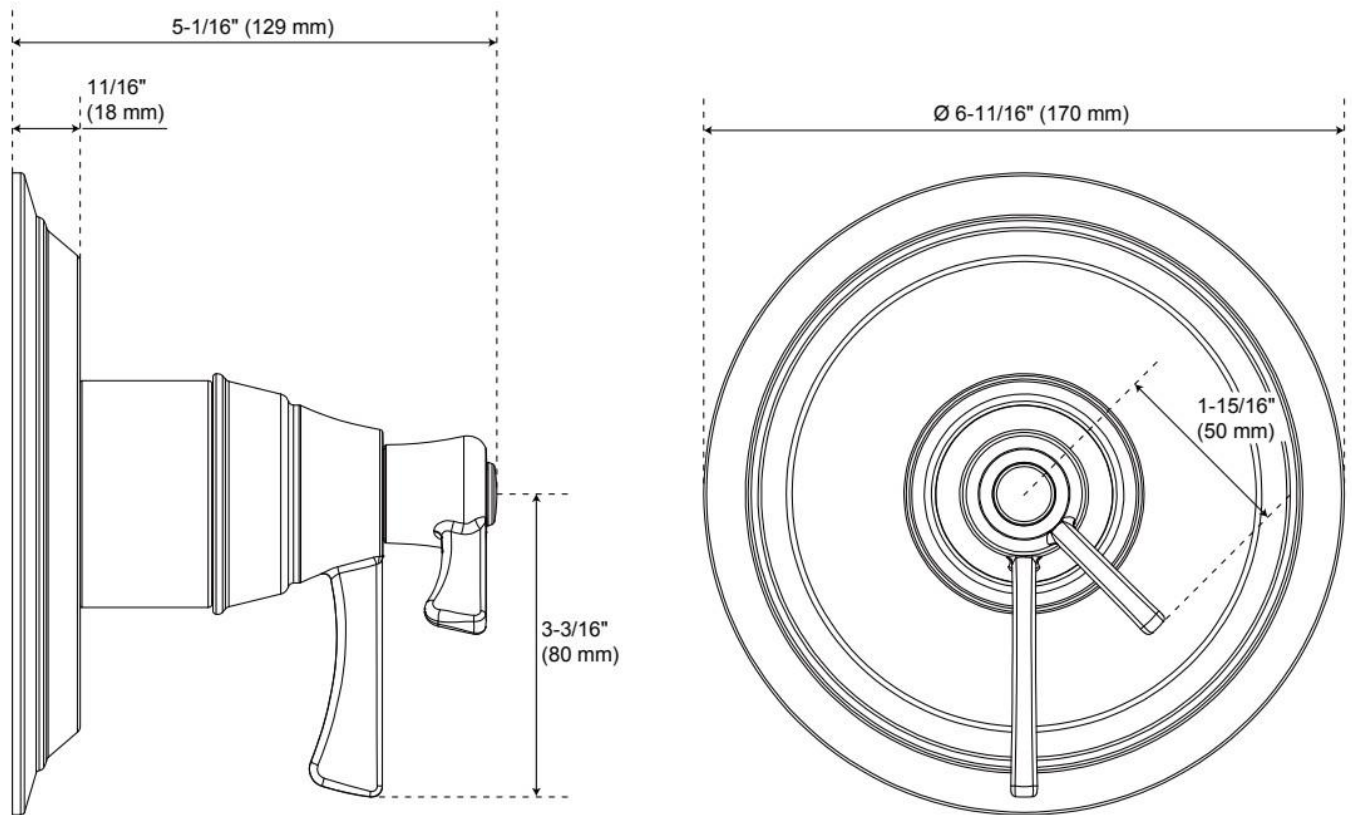
- Metal construction for ultimate strength and durability.
- May purchase with or without valve. Value required for use. (SH6001)
- When purchased with Rough-in Valve:
  - Dual control pressure balance valve with integral stops.
  - One-piece ceramic disc cartridge design for ease of maintenance.
  - Back-to-back capability.
  - Adjustable temperature limit stop.
  - Quick remove plaster guard.
  - Easy mounting brackets.
  - Optional air test cap available (ACF4001AIR)

REVISED 6/12/2025

# MARCEAU DUAL CONTROL PRESSURE BALANCE SHOWER TRIM - LEVER HANDLES

SKU: 955200-L

Code: SHMA441019, SH6001



REVISED 6/12/2025

# DUAL CONTROL PRESSURE BALANCE ROUGH-IN VALVE

SKU: 559885  
Code: SH6001

## FEATURES

Material: Metal

Flow Rate: Rough-in Valve Capacity - 6.21 gpm (23.5L/min) at 80 psi

Cartridge Type: Ceramic Disc

Optional Accessory: ACF4001AIR



ASME A112.18.1/CSA B125.1, Massachusetts Accepted, LISTED ID: SH6001



## ADDITIONAL FEATURES

- Dual control pressure balance valve with integral stops.
- One-piece ceramic disc cartridge design for ease of maintenance.
- Back-to-back capability.
- Adjustable temperature limit stop.
- Quick remove plaster guard.
- Easy mounting brackets.
- Optional air test cap available (ACF4001AIR)

REVISED 6/12/2025



# MARCEAU IN-WALL SHOWER DIVERTER VALVE - LEVER HANDLE

SKU: 955202-L

Code: SHMA441004, SHMA441005, SH6103



## FEATURES

Material: Metal

Cartridge Type: Ceramic Disc

Required for Installation: SH6103

ASME A112.18.1/CSA B125.1, ASME A112.18.2/CSA B125.2, Massachusetts Accepted, LISTED ID: SHMA441004\*, SHMA441005\*, SH6103



## ADDITIONAL FEATURES

- Metal construction for ultimate strength and durability.
- May purchase with or without valve. Value required for use.(SH6103)
- When purchased with Rough-in Valve:
  - Six total settings allow for shared water flow between outlets, giving you the ability to use two functions at once.
  - Ceramic disc cartridge.
  - Not intended as a shut off valve.
  - For installations only requiring 2 outlets, the 3rd outlet may be looped into one of the existing pipes.
  - Single-Function CALGreen Diverter Valve Cartridge that restricts water flow to one outlet at a time available. (SH6150)
  - Optional extension kit: SH6101EXT\*.

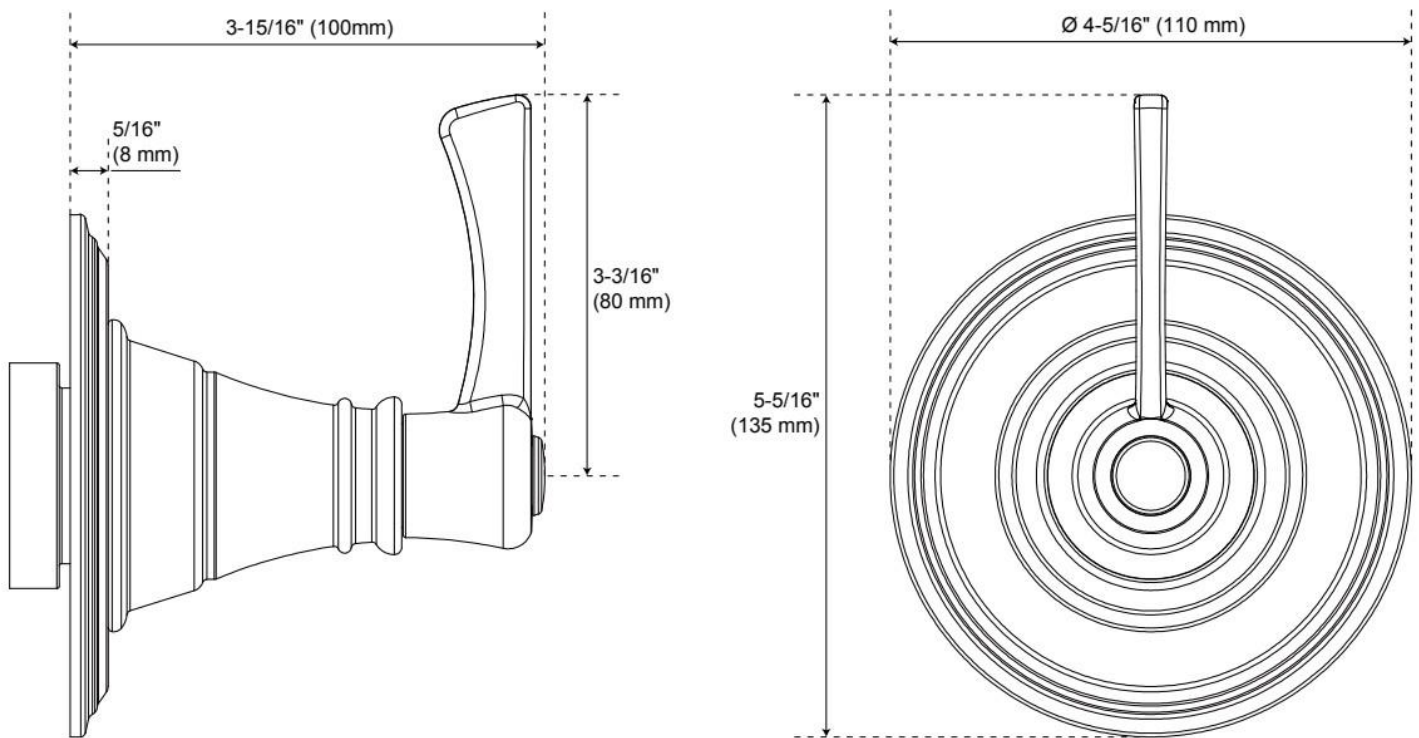
REVISED 6/23/2025



# MARCEAU IN-WALL SHOWER DIVERTER VALVE - LEVER HANDLE

SKU: 955202-L

Code: SHMA441004, SHMA441005, SH6103



REVISED 6/23/2025

# 3-WAY IN-WALL DIVERTER ROUGH-IN VALVE

SKU: 953056

Code: SH6103, SH6101

## FEATURES

Material: Brass



ASME A112.18.1/CSA B125.1, ASME A112.18.2/CSA B125.2, Massachusetts Accepted, LISTED ID: SH6103, SH6101



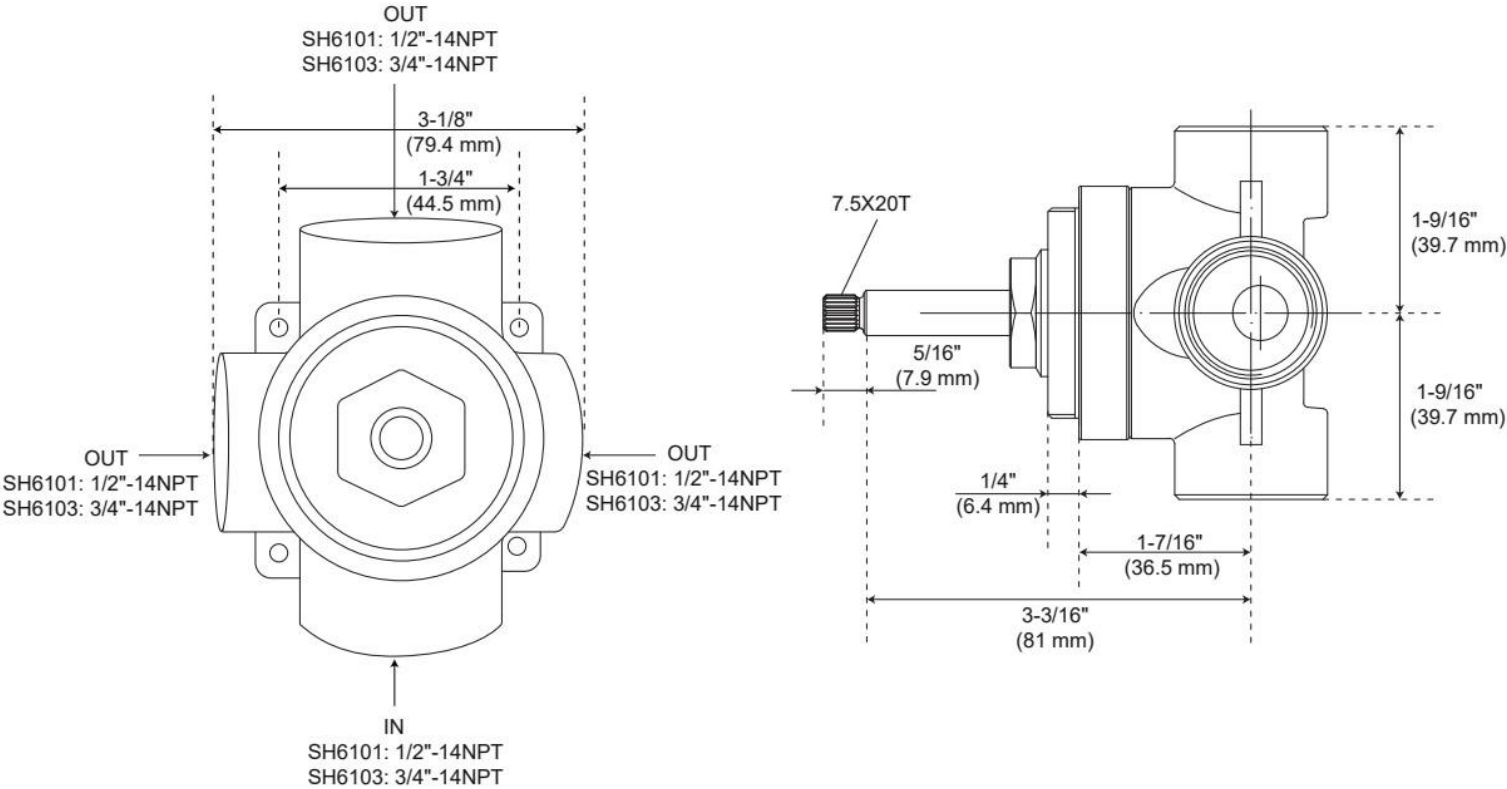
## ADDITIONAL FEATURES

- Six total settings allow for shared water flow between outlets, giving you the ability to use two functions at once.
- Ceramic cartridge.
- Available Single-Function Diverter Valve Cartridge restricts water flow to one outlet at a time.(SH6150)
- Not intended as a shut off valve.
- For installations only requiring 2 outlets, the 3rd outlet may be looped into one of the existing pipes.
- Optional extension kit: SH6101EXT\*.

REVISED 6/16/2025

# 3-WAY IN-WALL DIVERTER ROUGH-IN VALVE

SKU: 953056  
Code: SH6103, SH6101



REVISED 6/16/2025

# WALL-MOUNT RAINFALL SHOWER ARM

SKU: 948955

Code: SHRSA123, SHRSA181, SH485514, SHRSA150

## FEATURES

Material: Stainless Steel

Connection Type: 1/2" NPT



ASME A112.18.1/CSA B125.1, Massachusetts Accepted, LISTED ID: SHRSA123\*, SHRSA181\*, SHRSA150\*



## ADDITIONAL FEATURES

- All dimensions are ( $\pm 1/2"$ ).
- Escutcheon included.

REVISED 12/3/2024



# SWIVEL WATER SUPPLY ELBOW AND BRACKET FOR HAND SHOWER

SKU: 948936

Code: SHWES2050, SH485446, SH485535

## FEATURES

Installation Type: Wall Mount



ASME A112.18.1/CSA B125.1, LISTED ID: SHWES2050xy



## ADDITIONAL FEATURES

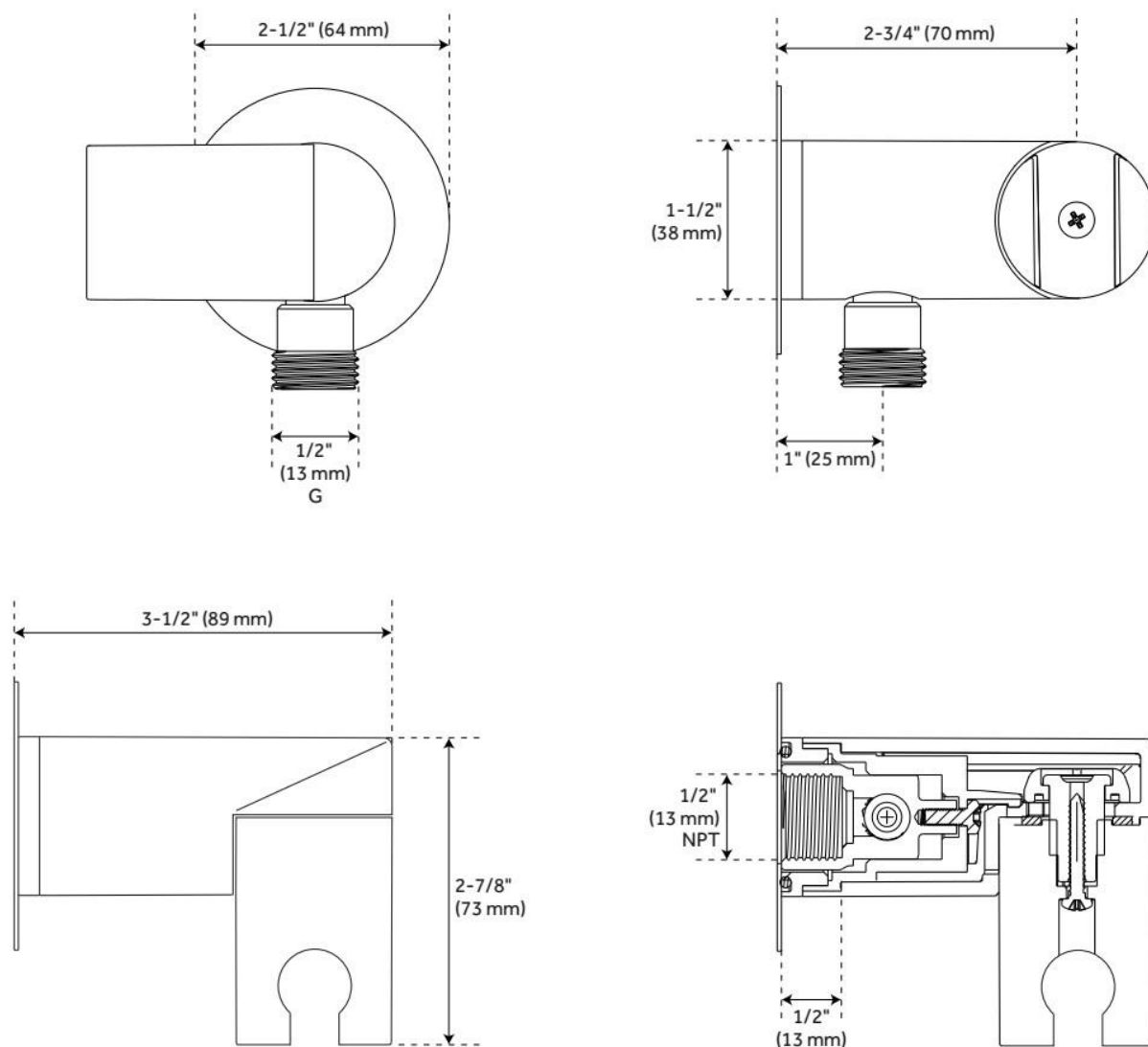
- 1/2" Female wall connection.
- 1/2" Male hose connection.
- Brass inlet/outlet, ABS body.

REVISED 3/18/2025

# SWIVEL WATER SUPPLY ELBOW AND BRACKET FOR HAND SHOWER

SKU: 948936

Code: SHWES2050, SH485446, SH485535



REVISED 3/18/2025

# PINECREST HAND SHOWER

SKU: 948929

Code: SHHS4090G

## FEATURES

Material: ABS

Hand Shower Spray: Full, Massage, Massage + Full

Hand Shower Flow Rate: 1.8 gpm (6.8 L/min) @ 80 psi



ASME A112.18.1/CSA B125.1, CEC Listed, WaterSense by IAPMO, Massachusetts Accepted, LISTED ID: SHHS4090G\*, SHHS4090G\*\*



## ADDITIONAL FEATURES

- 3 function hand shower (full spray, massage spray, full & massage spray).
- Easy-clean spray nozzles.
- Factory installed backflow prevention check valve.
- Hose sold separately.

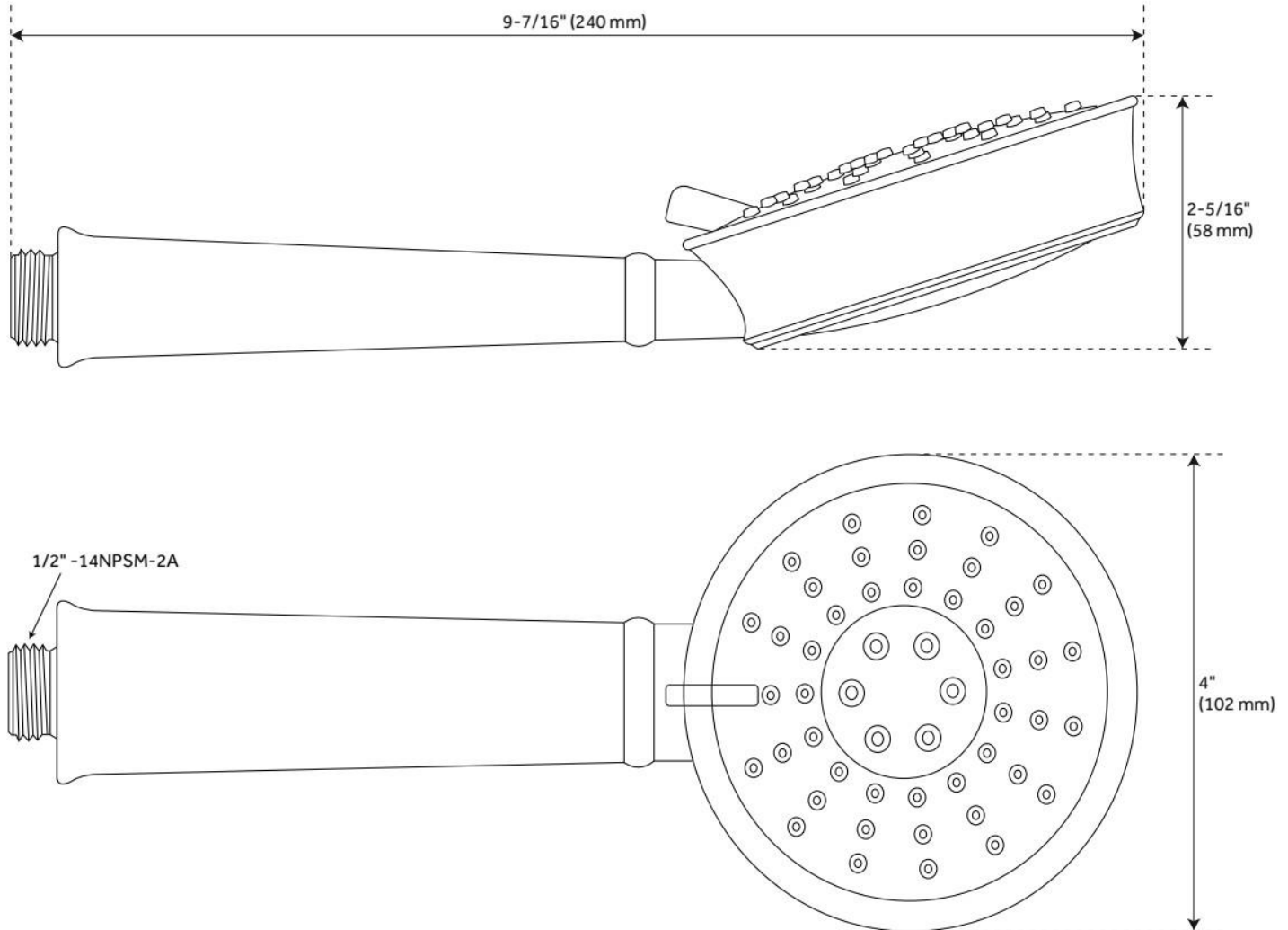
REVISED 2/19/2025



# PINECREST HAND SHOWER

SKU: 948929

Code: SHHS4090G



REVISED 2/19/2025

# 60" STRETCHABLE METAL HAND SHOWER HOSE

SKU: 948938

Code: SHH1010, SH484205, SH485500, SHH1010PB

## FEATURES

Connection Type: 1/2" IPS



ASME A112.18.1/CSA B125.1, Massachusetts Accepted, LISTED ID: SHH1010\*



## ADDITIONAL FEATURES

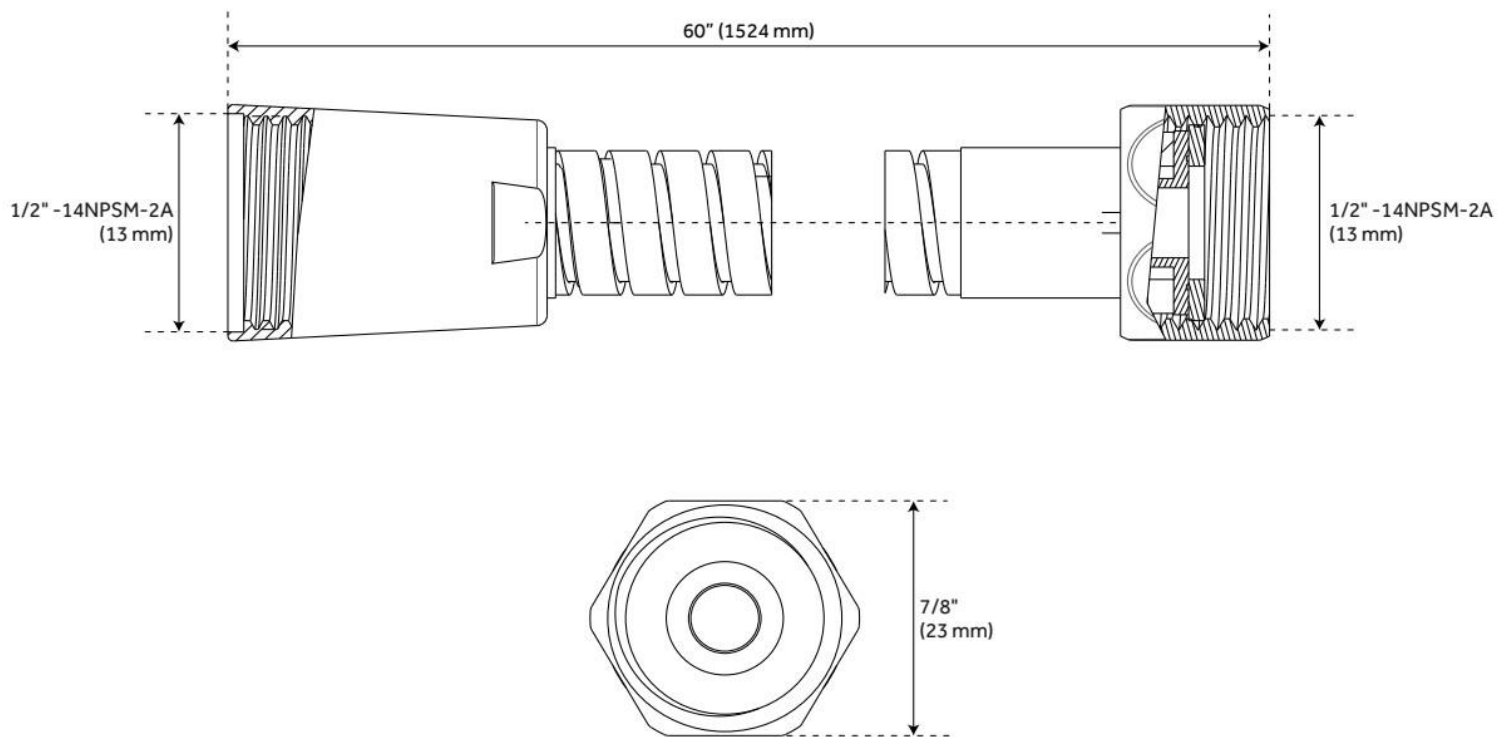
- 60" - 72" stretchable metal shower hose.
- Double spiral construction.
- Metal conical nut.

REVISED 5/24/2024

# 60" STRETCHABLE METAL HAND SHOWER HOSE

SKU: 948938

Code: SHH1010, SH484205, SH485500, SHH1010PB



REVISED 5/24/2024