

MARCEAU FREESTANDING TUB FAUCET WITH HAND SHOWER - CROSS HANDLE

SKU: 955197-C

Code: SHMA441007, SHMA441009



FEATURES

Material: Metal construction for strength and durability

Faucet Centers: 6-5/16"

Installation Type: Freestanding

Hand Shower Flow Rate: 1.75 gpm (6.6 L/min) @ 80 psi

Cartridge Type: Ceramic Disc

Swivel Spout: No

ASME A112.18.1/CSA B125.1, CEC Listed, WaterSense by IAPMO, Massachusetts Accepted, LISTED ID: SHMA441009*, SHMA441007*



ADDITIONAL FEATURES

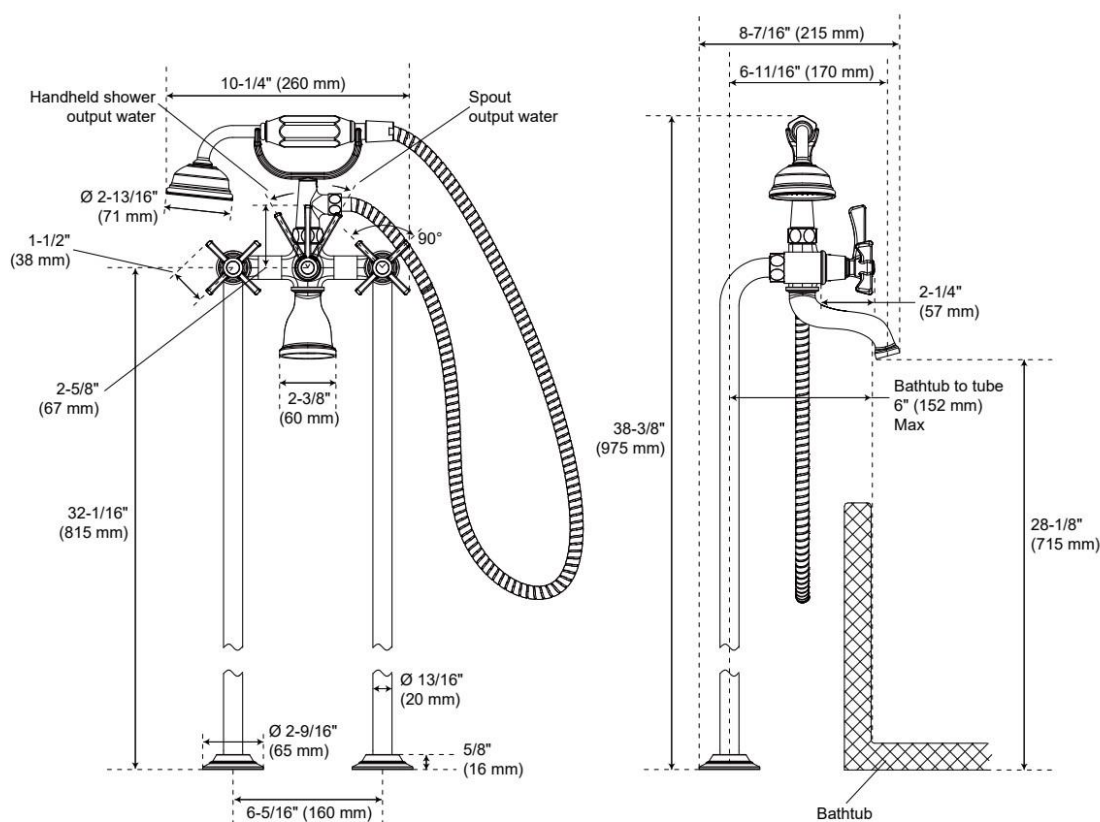
- Integral diverter to hand shower.
- Hand shower includes factory installed backflow prevention check valve.
- Underfloor access is required for proper installation. Installation on an existing concrete slab will require cutting and concrete removal.

REVISED 9/16/2025

MARCEAU FREESTANDING TUB FAUCET WITH HAND SHOWER - CROSS HANDLE

SKU: 955197-C

Code: SHMA441007, SHMA441009



REVISED 9/16/2025