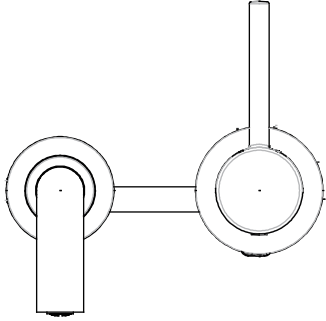


LEXIA WALL-MOUNT BATHROOM FAUCET

Product Code: SHWSCLE207



Product Features

- Max. flow rate: 1.2 gpm (4.5 L/min) @ 60 psi
- Metal handle
- Ceramic disc cartridge
- Installation: 2-hole
- Metal construction for strength and durability
- Drain type: metal push-pop with overflow
- Swivel spout: no
- Rough-in valve included

Finish Options

- BG - Brushed Gold
- CP - Chrome
- GM - Gunmetal
- MB - Matte Black
- PB - Polished Brass
- PN - Polished Nickel
- ZBN - Brushed Nickel

Codes and Certifications

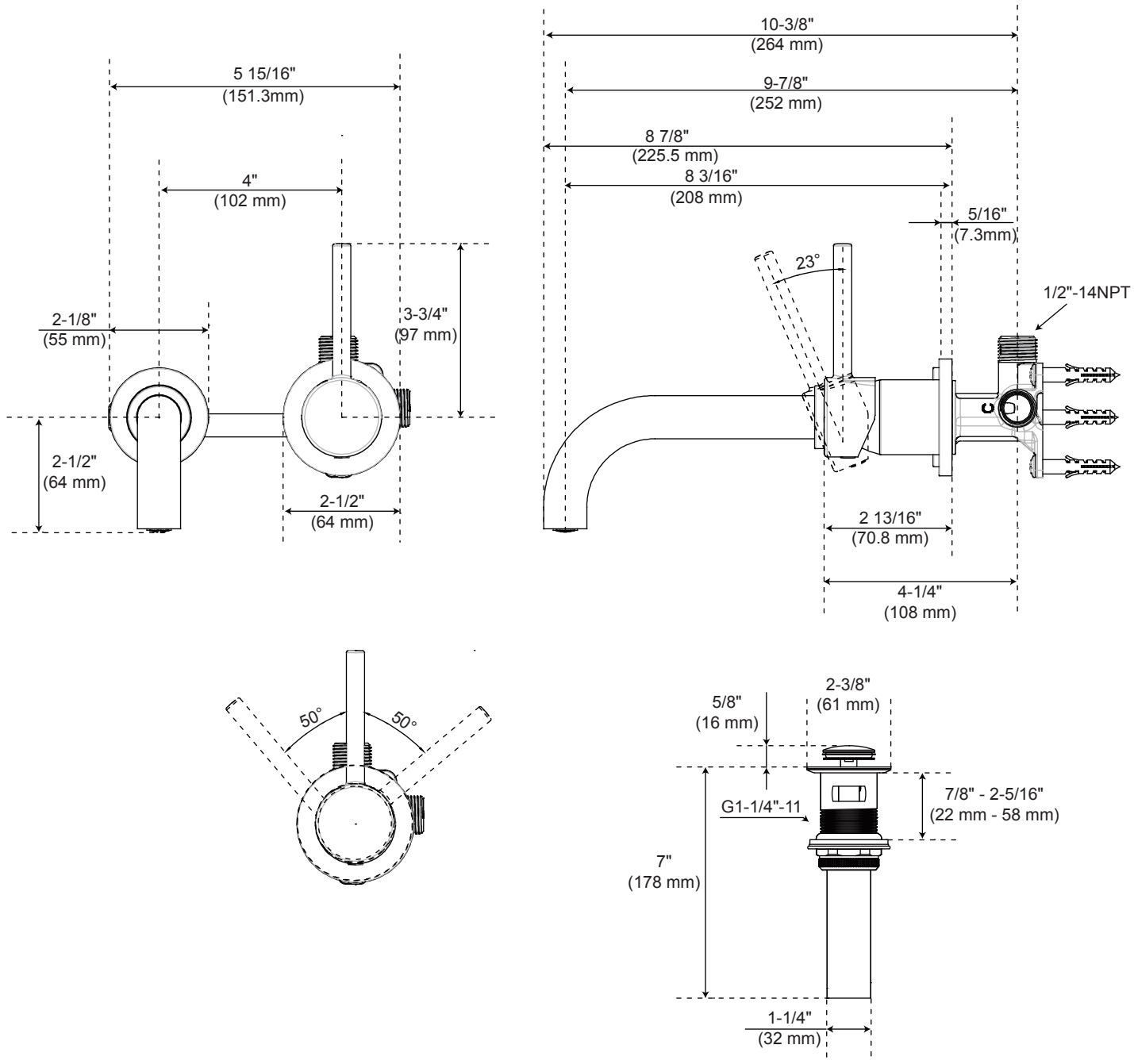


- Meets ASME A112.18.1 / CSA B125.1
- NSF/ANSI/CAN61: Q_s1
- cUPC/IAPMO listed
- ADA compliant
- Certified to Cal Green
- EPA WaterSense certified
- Massachusetts Accepted
- Listed on California Energy Commission MAEDbS Database

Revised: 03/11/26

LEXIA WALL-MOUNT BATHROOM FAUCET

Product Code: SHWSCLE207



All dimensions and specifications are nominal and may vary. Use actual products for accuracy

Revised: 03/11/26